

M/V OCEAN NOVA

POLAR CIRCLE AIR-CRUISE

9 NIGHTS | TRIP CODE: OCN10-PC

1st - 10th JANUARY 2024

PUNTA ARENAS - PUNTA ARENAS

The Polar Circle air-cruise is one of the most adventurous expeditions that we offer. Our main objective on this air-cruise expedition is to try and reach the Antarctic Polar Circle located at approximately 66° south of the equator. The Expedition Team handcrafts every voyage depending on the Antarctic weather and each day of the Polar Circle air-cruise is filled with ample opportunities to explore.

PLEASE NOTE:

All itineraries are for guidance only. Programs may vary depending on ice, weather, and wildlife conditions. Landings are subject to site availabilities, permissions, and environmental concerns per IAATO regulations. Official sailing plans and landing slots are scheduled with IAATO prior to the start of the season, but the expedition leader determines the final plan. Flexibility is paramount for expedition cruises.

ANTARCTIC AIR-CRUISE



**Safe
travels**

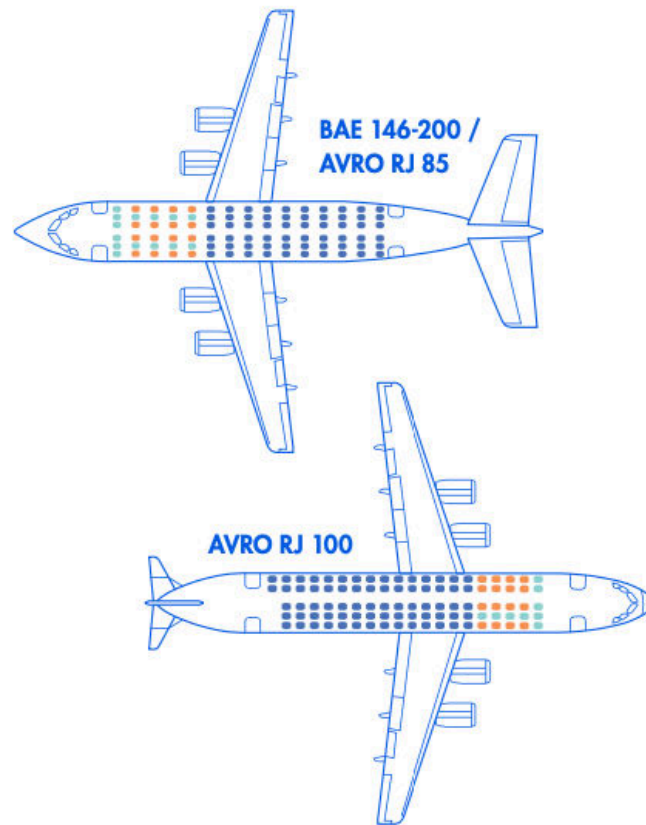
by

WORLD
TRAVEL &
TOURISM
COUNCIL

M/V OCEAN NOVA - AIRCRAFT USED

Aircraft Used

Three similar aircraft are used for flight operations: the BAE 146-200, the AVRO RJ 85, and the AVRO RJ 100. These aircraft were manufactured in the United Kingdom by British Aerospace (which later became part of BAE Systems). They are high-wing aircraft with short runway requirements, which make them particularly suited for this kind of destination. It is operated by Aerovias DAP, which has more than 25 years of experience flying in Patagonia and Antarctica.



Aircraft Specifications

- Model: BAE 146-200, AVRO RJ 85, AVRO RJ 100
- Capacity: 75 passengers maximum
- Engines: 4 turbofans Honeywell ALF 502R-5
- Length: 93 ft. 8 in (28.55 m)
- Cruise Speed: 465 mph (750 km/h)
- Wingspan: 86 ft. 5 in (26.34 m)
- Service Ceiling: 31,200 ft. (9,500 m)

Seating

Category

- Preferred – Reserved Seating
- Economy – Open Seating
- Seats not in use



M/V OCEAN NOVA - ABOUT THE SHIP

Ocean Nova is a great ship for Antarctica expeditions. It is a sturdy and nimble expedition vessel that was built in Denmark in 1992 to sail the ice-choked waters of Greenland. It has a strengthened hull that is ideally suited for expedition travel in Antarctica. The ship was fully refurbished in 2006 and since then has benefitted from annual upgrades and improvements.

For air-cruises, Ocean Nova has a capacity for 67 passengers accommodated in comfortable outside cabins. The ship offers three categories of accommodation: dedicated Single Cabins, Twin Cabins, and Triple Cabins. All cabins feature a picture window, a writing desk with a chair, a wardrobe, an individually controlled heating system, and a private bathroom with a shower.

In addition to a glass-enclosed observation lounge and presentation room, Ocean Nova also has a spacious dining room, a bar, a library, a small gym, and an infirmary. The ship has a fleet of 7 Zodiac boats that are well suited for disembarking and wildlife watching.

Ocean Nova Specifications

- Passengers: 72 max
- Staff & crew: 46
- Lifeboats: 2, fully enclosed, capacity of 110 (in addition to 4 life rafts, capacity of 100)
- Length: 73 m
- Breadth: 11 m
- Draft: 3.7
- Propulsion: Diesel engines, 2,000 horsepower
- Ice class: 1B, EO (Hull Ice 1A)
- Cruising speed: 12 knots in open water

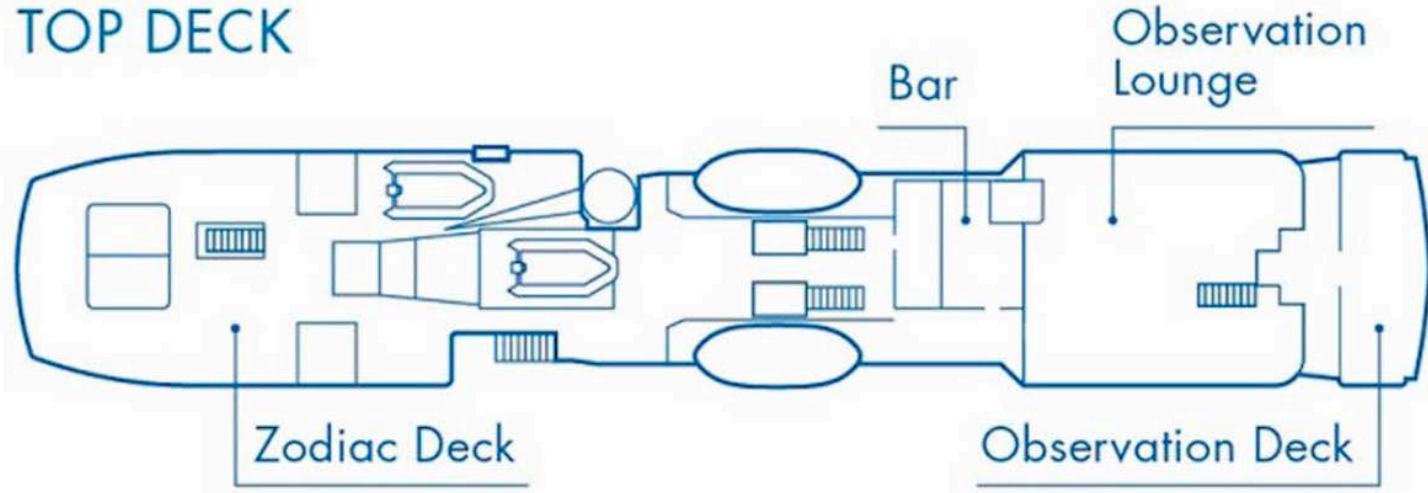


M/V OCEAN NOVA

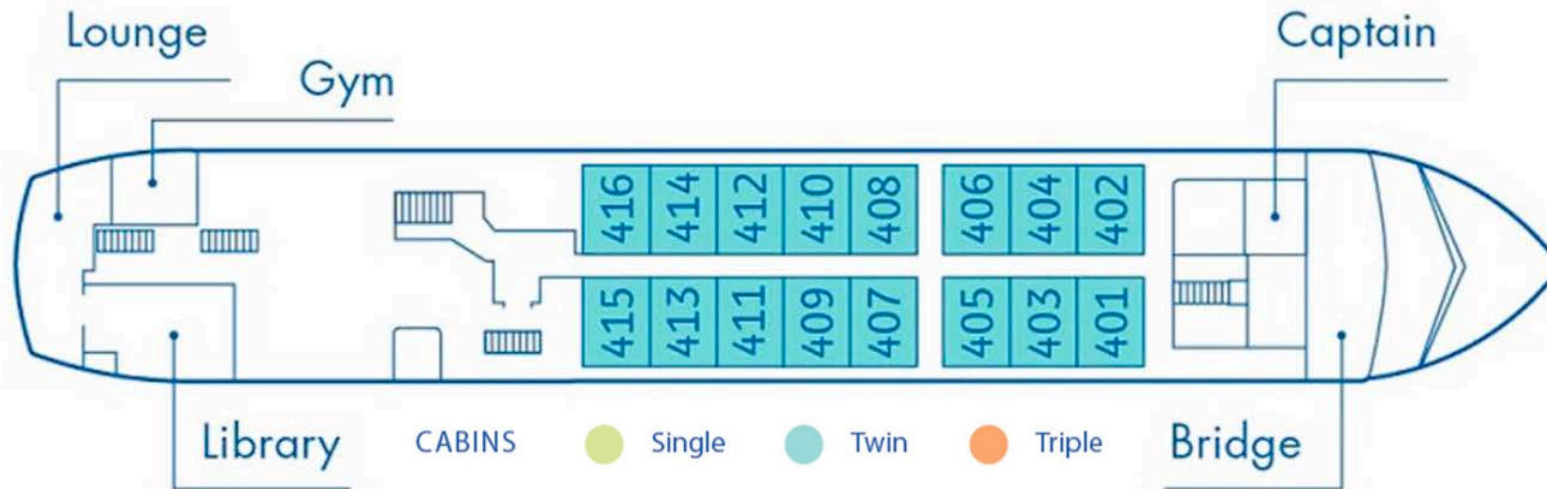


M/V OCEAN NOVA - DECK PLANS

TOP DECK

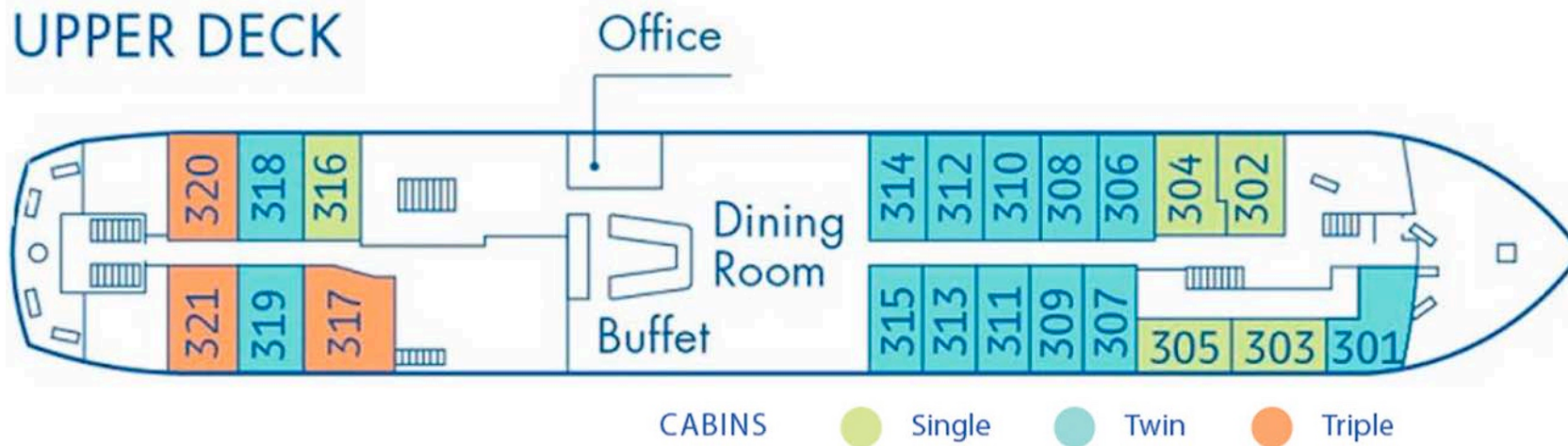


BRIDGE DECK

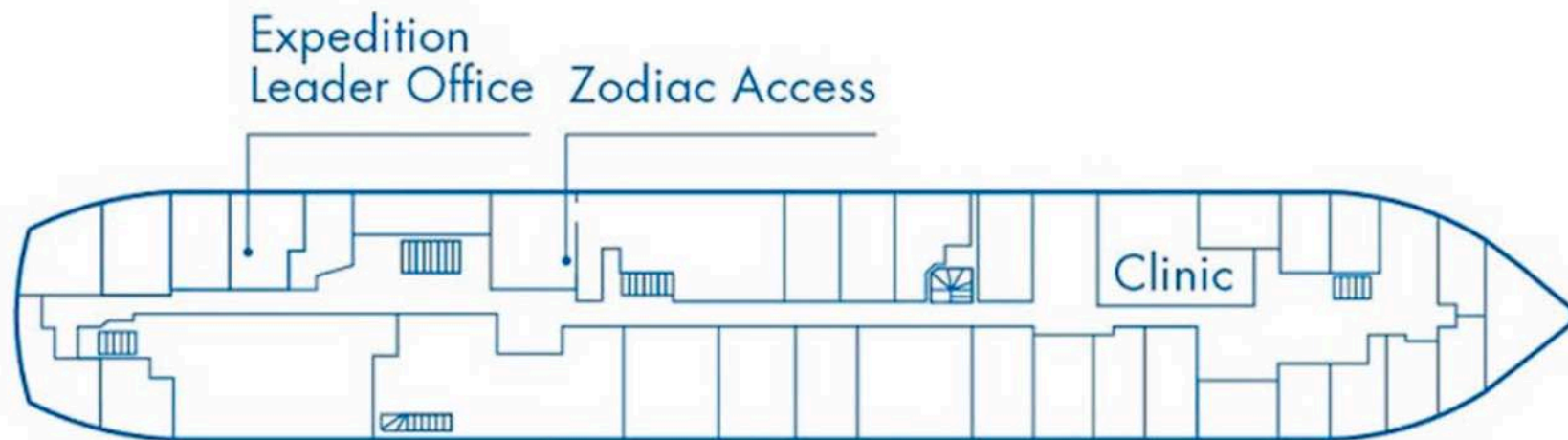


M/V OCEAN NOVA - DECK PLANS

UPPER DECK

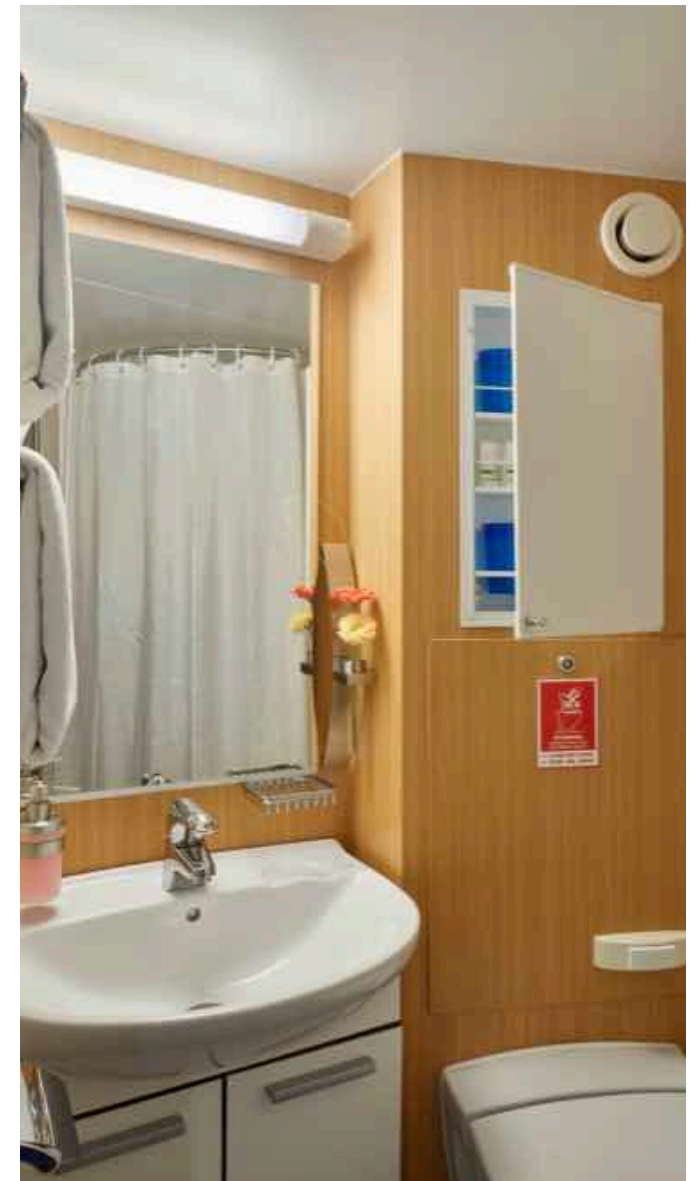
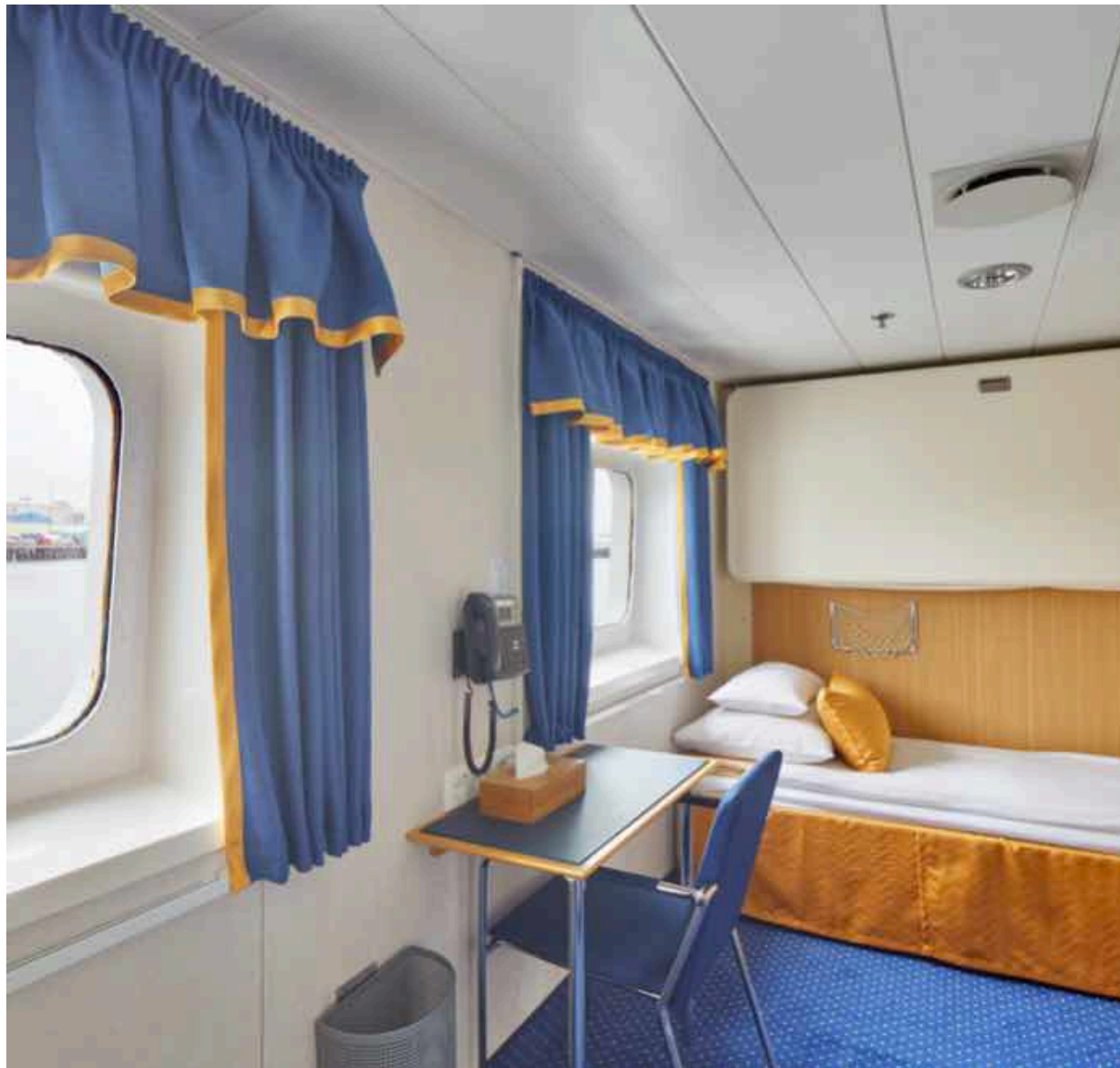


MAIN DECK



M/V OCEAN NOVA - CABINS

SINGLE CABINS - 87 ft2 – 8 m2 featuring bathroom, window, desk and chair one lower single bed

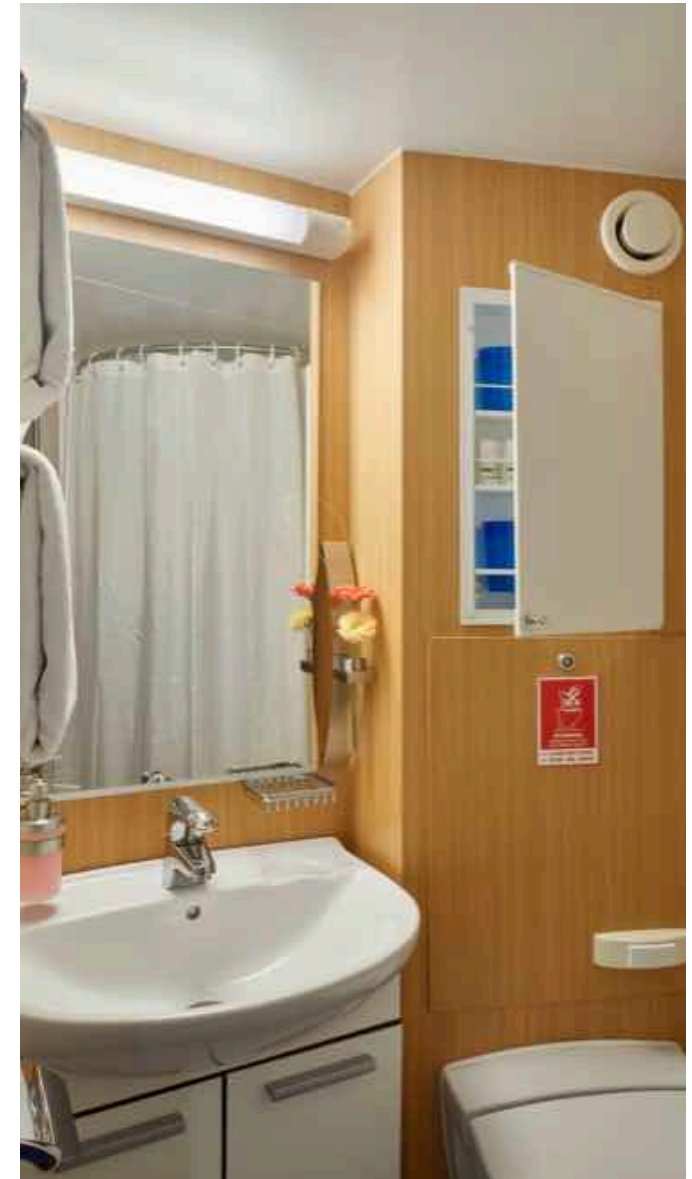


THELATINAMERICATRAVELCOMPANY.COM | Email: info@thelatinamericatraveltravelcompany.com
UK ☎: +44 (0) 20 8191 7772 | Part of HeadsEast Ltd - UK business registration: 6717612



M/V OCEAN NOVA - CABINS

TWIN CABINS - 106 ft2 – 10 m2 featuring bathroom, window, desk and chair, and two lower twin beds



THELATINAMERICATRAVELCOMPANY.COM | Email: info@thelatinamericatraveltravelcompany.com
UK ☎: +44 (0) 20 8191 7772 | Part of HeadsEast Ltd - UK business registration: 6717612



M/V OCEAN NOVA - CABINS

TRIPLE CABINS - 150 ft2 – 14 m2 featuring bathroom, window, desk and chair, two lower twin beds, and one upper bed



THELATINAMERICATRAVELCOMPANY.COM | Email: info@thelatinamericatraveltravelcompany.com
UK ☎: +44 (0) 20 8191 7772 | Part of HeadsEast Ltd - UK business registration: 6717612



M/V OCEAN NOVA - FACILITIES



BAR



LOUNGE



DINING



Interior Design

Designed to provide optimal comfort and a modern style, our spaces invite relaxation and enjoyment. Enrique Concha & Co., a renowned design studio in Santiago de Chile, designed Magellan Explorer's interiors considering every detail from the colours, the materials, to the lighting. Each element skilfully selected to enhance the experience on board.

Suites and Cabins

For our air-cruises, Magellan Explorer has a capacity for 73 guests lodging in seven accommodation categories, including dedicated single cabins. All cabins except Porthole Cabins feature private balconies. All double cabins except two have two twin beds that can be configured as one king-size bed. All accommodations feature a wardrobe, individually controlled heating system, a sitting area, and a private bathroom with a shower and heated floors.

Destination Experience on the Inside

Magellan Explorer's public spaces were designed to create a connection with its destinations. The accessible bow allows guests near the water level for exceptional wildlife viewing and photographic opportunities. Guests can enjoy a forward-facing observation lounge and bar, where our expert polar guides also deliver educational programs and information. The outdoor observation deck offers expansive views and close contact with the natural environments we sail through. The dining room offers ample space for guests with large windows for sightseeing while enjoying a delicious meal. There is a meeting room, a library filled with Antarctic-themed books, a gift shop, and a protected outdoor barbecue area. The ship also has a gym and a sauna.

Magellan Explorer's Features

Built to the latest Polar Code specifications, the ship carries a Polar Class 6 ice-class (Lloyd's Register PC6). For comfortable navigation and manoeuvrability, the ship features stabilisers and bow and stern thrusters. For Safety in navigation, there is an ice-detecting radar. And to reduce the environmental footprint, the vessel is equipped with an energy-recovery system that recycles the heat produced by the engines to warm up the ship and its water supply.

Guest Features

- A bar offering a selection of Chilean domestic and international drinks
- Gym and sauna
- Well stocked library with a collection of Antarctic-themed books in multiple languages
- Local intranet with daily programs, international news, etc. accessible wirelessly throughout the ship
- Meeting Room with multimedia resources and interactive science lab
- Satellite internet service available and accessible wireless throughout the ship, at an additional cost
- Forward observation deck and accessible bow
- Zodiac embarkation area equipped with hangers, lockers and sitting facilities

Dining Features

- Main dining room offers buffet breakfast and lunch, and table service dinner
- The BBQ deck offers al fresco dining, weather permitting
- Selection of premium Chilean wines served with lunch and dinner
- Snacks and drinks during welcome and farewell celebrations
- Complimentary self-service coffee, tea, chocolate, cappuccino, and water offered 24/7 in the library and bar



What is life like on the ship?

The ship is our base, a welcoming place to return to after our excursions. Our goal is to make it feel like your home away from home. We deliver a boutique hospitality experience that is personal, comfortable, and flexible. You can enjoy the privacy of your cabin, or socialise in the lounge, find a space for quiet contemplation in the library, or you can join fellow travellers on deck. Our team interacts with guests throughout the journey, sharing their knowledge and keeping everyone briefed on the trip's progress.

What about the dining experience on board?

Onboard dining gives you a chance to get to know your travel companions and make new friends. With different sized tables and no pre-assigned seating, you can choose to sit privately or join a group; the choice is yours. Our chefs care about flavour and detail. In the remoteness of Antarctica, they may surprise you with a fresh sprig of rosemary as decoration. All meals offer a variety of choices that appeal to many tastes, including several main courses and side dishes, salads, fruits, and pastries. Our waitstaff serves a full selection of drinks. Beers and premium Chilean wines are included with lunch and dinner. Depending on cruising conditions, a barbecue on deck may be offered.

What makes these ships different?

We pride ourselves on offering expert and welcoming service on board all our ships. On each ship you can expect a similar expedition program and hospitality experience: briefings, presentations, social time in the lounge, access to the bridge, and daily cabin service are offered with the same standards of excellence. In all cabins we provide a reusable water bottle, refreshing bath products, chocolates at turn down, and more.

While there are many similarities in the onboard experience, there are also some differences in each ship's style and facilities. Magellan Explorer is a new vessel, with a modern design. Nearly all cabins have a private balcony: you can wrap yourself in a blanket and sip a warm beverage as you enjoy views of Antarctica in complete privacy. Ocean

Nova offers an informal base for adventurous travellers. The ship's strong hull and excellent manoeuvrability provide an exceptional expedition experience at a more affordable price.

No matter which one of our small ships you choose for your Antarctica expedition, our goal is to ensure that you enjoy a friendly atmosphere, comfortable cabins, and common areas with knowledgeable and helpful staff.

Fly The Drake

It used to be that travellers who wanted to reach the Antarctic Peninsula had only one option: a 2-day sail across the notoriously rough seas of the Drake Passage. However, since 2003, our boutique wilderness adventures have offered a more comfortable alternative. The two-hour flight takes you from Punta Arenas, the Chilean gateway to Patagonia, directly to Antarctica, where you then board your expedition ship. No stormy crossing. No seasickness. Just quick, total immersion in your Antarctic adventure.

Small group Expedition

Our small expedition vessels are more like private yachts, offering direct access to areas along the Antarctic shore that larger ships simply can't reach. Since we have fewer guests, you get on and off faster, so your time ashore is focused where it should be: savouring every moment of a travel experience unlike any other.



The Nature of Expedition Travel

Our air-cruise expeditions are suitable for adventurous travellers who enjoy full mobility and reasonably good health. Expedition travel to Antarctica requires flexibility and adaptation to ever-changing circumstances. There is no airport or port infrastructure at King George Island, or anywhere in the Antarctic Peninsula. After landing and a walk to shore, travellers reach their ship by Zodiac boat.

Your Travel Companions

Each year we welcome travellers from over 40 different countries. They may travel alone, as a family, or as part of a group. While some of your traveling companions may speak different languages and have different customs, they will share your passion for adventure and interest in the natural world.

Participation Form

Participants are required to fill out and submit an online Participation Form and return it to Antarctica21 at least 120 days prior to departure. Based on the medical information provided in the form, Antarctica21's Medical Director may request a medical certificate. All participants 75 years of age and older must submit a medical certificate.

Medical Insurance

Participants must be adequately covered by a travel insurance policy that covers aero-medical evacuation from Antarctica as a result of a medical emergency during the trips, including emergencies related to pre-existing health conditions and pandemics.

Cancellation Insurance

We strongly urges participants to be adequately covered by trip cancellation and interruption insurance.

Itinerary

Every effort will be made to adhere to the planned program. However, with this type of adventurous travel to Antarctica, changes to the itinerary may occur due to severe and changeable weather. We need to emphasise the fact that weather conditions are unpredictable, and safety is always the paramount concern on any Antarctic voyage. For this reason, Antarctica21 reserves the right to change the itinerary described due to weather conditions or other factors beyond Antarctica21's control without consulting the participants.

Baggage and Baggage Allowance

We recommend that clients avoid expensive designer luggage that is easily damaged. We also strongly recommend that clients take out a luggage insurance policy that covers the cost of repairs or replacement in case their luggage is damaged. Due to the nature of the expedition, and as stated in our Terms and Conditions of Sale, Antarctica21 cannot be responsible for any damage to a customer's luggage. The maximum weight allowed on the flights to and from Antarctica is 20 kg (44 Lb.) per person, including hand luggage. For Classic Antarctica, Polar Circle Air-Cruises, excess luggage will be kept in custody in Punta Arenas and returned to travellers after their time in Antarctica. For Antarctica Express and Antarctica and South Georgia Air-Cruises, excess luggage will be disembarked at Port Williams and sent to Punta Arenas by air cargo at the traveler's expense. It will be available for pick up in Punta Arenas upon the traveler's return from Antarctica.

The baggage weight limit is a technical requirement imposed by the flight operation. Unfortunately, it is not possible to purchase extra allowance.

Note: At certain points during the expedition, you will be required to handle your own luggage.



Expedition Language

The official expedition language of our air-cruises is English. The voyage will take travellers to remote destinations where interaction with our polar guides is essential. In the interest of safety and for the enjoyment of the experience we strongly recommend that travellers who do not understand English be accompanied by someone who does, such as a friend, a family member, or a Tour Leader.

Antarctic Flights and Contingency Plan

Flights to and from Antarctica operate based on weather conditions. Occasionally, flight plans have to be adjusted, impacting itineraries. For further information just ask your travel consultant or see your trip dossier.

Trips starting in Punta Arenas

If you are joining an air-cruise starting in Punta Arenas, you must plan to arrive with a flight that is scheduled to land in Punta Arenas no later than 2 PM on Day 1 of the itinerary. The same deadline applies to travellers arriving directly at the hotel on Day 1.

That afternoon, all travellers must attend a mandatory safety and Antarctic guidelines briefing and an information session covering important practical details. You must also attend a fitting session for your expedition boots. Participation in these activities is essential for the success of the expedition.

Travellers who miss the 2 PM arrival deadline will be considered "no-show", and they will not be able to participate in the expedition and will receive no refund.

Remember that scheduling tight connections is never wise when traveling to remote places with limited services. Protect your travel investment by building some buffer in your travel plans in case of problems with luggage delivery, flight delays, etc. In case your

flight to Punta Arenas is delayed for reasons beyond your control, Antarctica21 will do everything possible to accommodate your late arrival. However, Antarctica21 cannot assume any responsibility for any resulting complications, including your inability to join the expedition. We recommend that you purchase a trip cancellation and interruption insurance policy to cover this risk.

Trips ending in Punta Arenas

We strongly suggests that any travel plans made for the last day of the expedition do not start until the late afternoon and that a flexible air ticket be held for your journey home in case you need to change your travel arrangement following a delay of the return flight from Antarctica. Please ask your travel consultant for assistance.

Trips starting in Ushuaia

For Antarctica Express Air-Cruises: boarding in Ushuaia is between 3 PM and 4 PM, directly at the pier. Boarding will close at 4 PM.

Trips ending in Ushuaia

Arrival back in Ushuaia is planned for the morning. However, delays are possible. Antarctica21 strongly suggests that any travel plans made for the last day of the expedition do not start until the late afternoon.



There's still a side of the Earth that remains virtually untouched. An entire continent of windswept expanses, snow-shrouded peaks, and haunting emptiness stretching to the far horizon. A place where ice takes on hues of turquoise and iridescent blue so surreal, you feel you've entered a dream world. Where even as you reach for words to describe your sense of awe, you realise none will ever capture the experience of being here.

Landscape

A land that holds 90 % of Earth's ice, Antarctica stuns visitors with its awe-inspiring beauty. See peaceful bays dotted with colossal icebergs; cruise along deep fjords and see massive glaciers; be amazed by sharp snowy peaks that jut out of the sea.

Adventure

Feel the spray of seawater on your cheeks as you cruise in a Zodiac boat to shore. Follow in the footsteps of early explorers as you hike on Antarctic soil. Join our optional Sea Kayaking and Hiking & Snowshoeing programs.

Wildlife

Penguins, whales, seals, and seabirds congregate in Antarctica and South Georgia during the austral summer. Present in large numbers, you can move along in their world and find endless inspiration for photographs.

Memories

Setting foot on the seventh continent is a privilege and an honour. You will bring home unforgettable tales, and your journey will arouse the curiosity and admiration of your friends and family.



YOUR DETAILED DAY BY DAY ITINERARY

DAY 1

1st JANUARY 2024

PUNTA ARENAS

ARRIVE IN PUNTA ARENAS IN SOUTHERN CHILE TO BEGIN THE ADVENTURE

Arrive in Punta Arenas, Chile, before 2 PM, where you are welcomed by the cruise staff and transferred to your hotel. In the afternoon, you are welcomed at Explorers House to attend a mandatory briefing that provides important information about your air-cruise and reviews the essential guidelines for Antarctic visitors.

Later, gather for a welcome dinner and meet your fellow adventurers while enjoying a typical regional menu.

IMPORTANT NOTE: All itineraries are for guidance only. Programs may vary depending on ice, weather, and wildlife conditions. Landings are subject to site availabilities, permissions, and environmental concerns per IAATO regulations. Official sailing plans and landing slots are scheduled with IAATO prior to the start of the season, but the expedition leader determines the final plan. Flexibility is paramount for expedition cruises.

 **Meals Included:** Dinner.

OVERNIGHT

CABO DE HORNOS



A smart and stylish hotel with good facilities, adequate rooms and a convenient location in the heart of Punta Arenas in front of the main square.

[CLICK HERE TO LEARN MORE](#)



Photos for guidance only & not necessarily the room booked



THELATINAMERICATRAVELCOMPANY.COM | Email: info@thelatinamericatraveltravelcompany.com
UK ☎: +44 (0) 20 8191 7772 | Part of HeadsEast Ltd - UK business registration: 6717612



YOUR DETAILED DAY BY DAY ITINERARY

DAY 2

2nd JANUARY 2024

ANTARCTICA

FLY TO THE SOUTH SHETLANDS TO JOIN YOUR SUIP

Your Antarctic adventure begins with a two-hour flight from Punta Arenas to King George Island, in the South Shetland Islands. As you exit the airplane, the clear Antarctic air fills your lungs for the first time.

You then walk 2-km (1.25-miles), passing Chile's Frei Station and Russia's Bellingshausen Station to reach the shore and board a Zodiac that will take you to your boutique expedition vessel.

 **Meals Included:** Breakfast & Dinner.

OVERNIGHT

OCEAN NOVA



Sturdy and nimble expedition vessel built in Denmark in 1992, refurbished in 2006 and since has benefitted from annual upgrades.

[CLICK HERE TO LEARN MORE](#)



Photos for guidance only & not necessarily the room booked



THELATINAMERICATRAVELCOMPANY.COM | Email: info@thelatinamericatraveltravelcompany.com
UK ☎: +44 (0) 20 8191 7772 | Part of HeadsEast Ltd - UK business registration: 6717612





YOUR DETAILED DAY BY DAY ITINERARY

DAYS 3 - 8

3rd - 8th JANUARY 2024

ANTARCTICA

DAYS SPENT EXPLORING THE ANTARCTICA & REACH THE POLAR CIRCLE

Sail along ice-filled fjords and among spectacular icebergs, while enjoying the company of seabirds, penguins, seals, and whales. Visit the South Shetland Islands and the western coast of the Antarctic Peninsula, disembarking by Zodiac each day. In small groups, hike to extraordinary sites and take part in exploratory Zodiac excursions to otherwise inaccessible areas. Our expert polar guides share their passion for Antarctica through an engaging program of illustrated presentations, and lead you ashore to interpret the wildlife, the history, and the many wonders of the Antarctic environment.

Enjoy spectacular views, from the glass-enclosed lounge, while sharing your daily adventures with fellow guests over a drink. The goal of this expedition is to sail far south in the attempt to reach the Polar Circle. The Expedition Team plans the specific voyage route based on local conditions and takes advantage of the ever-changing opportunities provided by nature. Flexibility will be the key to a successful voyage. Your voyage may include visits to sites in the South Shetland Islands, the Antarctic Sound, the Gerlache and Penola Straits, and the Crystal Sound. Each voyage is unique, and crafted to provide the best possible overview of the varied Antarctic environment.

 **Meals Included:** Breakfast, Lunch & Dinner.

OVERNIGHT

OCEAN NOVA



Sturdy and nimble expedition vessel built in Denmark in 1992, refurbished in 2006 and since has benefitted from annual upgrades.

[CLICK HERE TO LEARN MORE](#)



Photos for guidance only & not necessarily the room booked



THELATINAMERICATRAVELCOMPANY.COM | Email: info@thelatinamericatraveltravelcompany.com
UK ☎: +44 (0) 20 8191 7772 | Part of HeadsEast Ltd - UK business registration: 6717612



YOUR DETAILED DAY BY DAY ITINERARY

DAY 9

9th JANUARY 2024

PUNTA ARENAS

FLIGHT BACK TO PUNTA ARENAS

Scheduled return flight from Antarctica Return to King George Island and bid farewell to Antarctica before boarding the flight back to Punta Arenas. Upon arrival, transfer to your hotel for the night.

Note: Meals in Punta Arenas are at your leisure and not included in the program.

 **Meals Included:** Breakfast.

OVERNIGHT

CABO DE HORNOS



A smart and stylish hotel with good facilities, adequate rooms and a convenient location in the heart of Punta Arenas in front of the main square.

[CLICK HERE TO LEARN MORE](#)



Photos for guidance only & not necessarily the room booked



THELATINAMERICATRAVELCOMPANY.COM | Email: info@thelatinamericatraveltravelcompany.com
UK ☎: +44 (0) 20 8191 7772 | Part of HeadsEast Ltd - UK business registration: 6717612



DAY 10

10th JANUARY 2024

PUNTA ARENAS

END OF YOUR ANTARCTIC AIR CRUISE & ON TO YOUR NEXT ADVENTURE!

After breakfast, transfer to the Punta Arenas airport for your onward flight.

 **Meals Included:** Breakfast.



LATC Founder Chris

"Antarctica is without doubt the most amazing trip I have made anywhere in the world and totally unique from every aspect and I will be going back to see more of the frozen continent on a regular basis. It is both a privilege and a responsibility to be able to send our clients."



antarctica
flora & fauna
INFOGRAPHIC

ANIMALS:

hourglass dolphin, weddell seal, crabeater seal, leopard seal, ross seal

SEA LIFE:

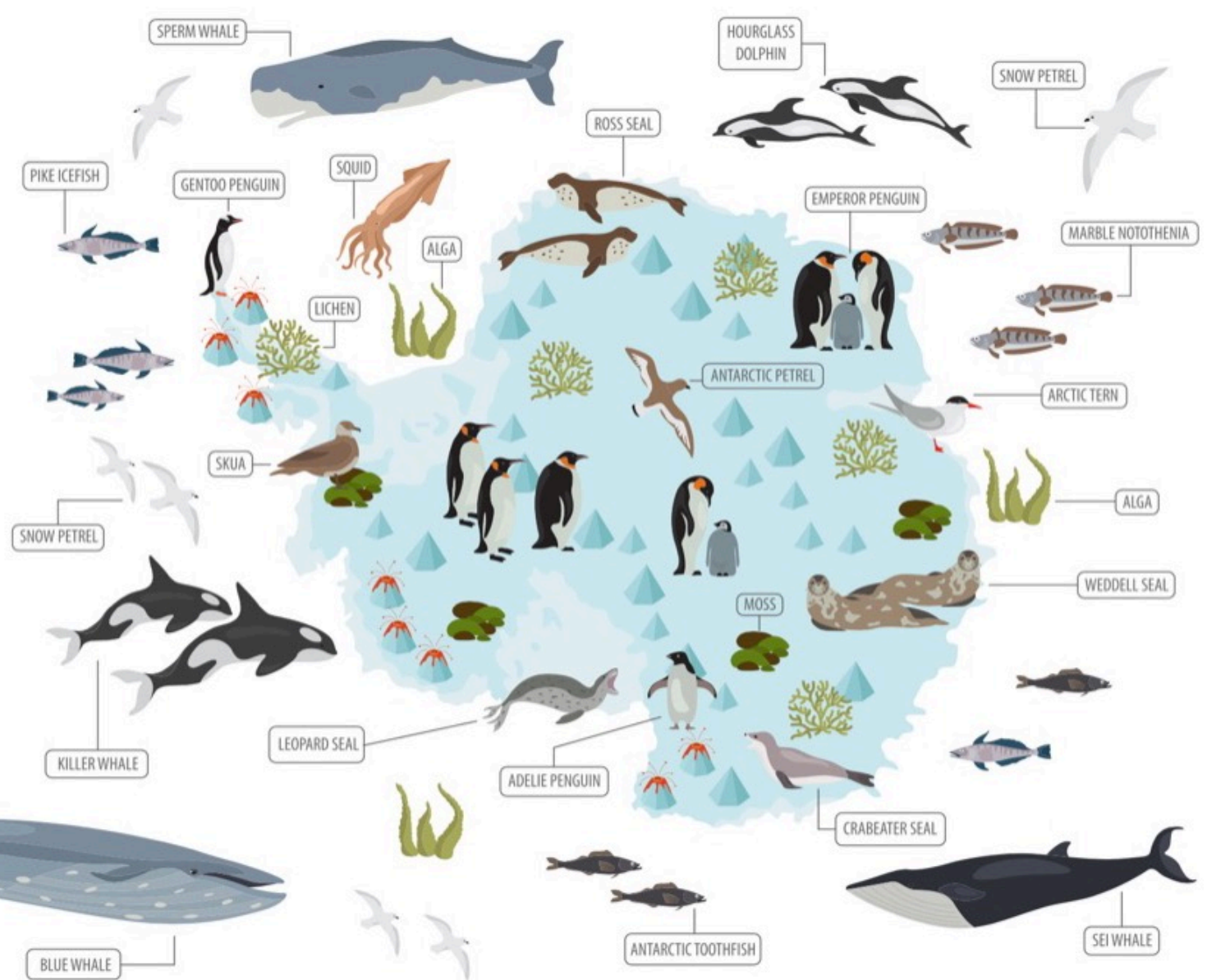
sperm whale, blue whale, killer whale, squid, sei whale, marble notothenia, antarctic toothfish, pike icefish

BIRDS:

emperor penguin, adelic penguin, gentoo penguin, antarctic petrel, snow petrel, skua, arctic tern

PLANTS:

lichen, moss, alga



TRIP CODE: OCN10-PC: POLAR CIRCLE AIR-CRUISE - START & FINISH DATES

Starts Punta Arenas 1st January 2024 and Finishes Punta Arenas 10th January 2024 - Guided in: English

CABIN	USD	GBP**
Triple Cabin - price per berth	US\$15,995	£15,195
Twin Cabin - price per berth	US\$18,495	£17,570
Single Cabin	US\$26,395	£25,075
Kayaking (must be pre-booked)	US\$895	£850
Hiking & Snowshoeing per time (book & pay onboard only)	US\$85	£81
* Preferred Seating on the Antarctica Flight (round trip)	US\$495	£470
An deposit of \$ 3,000 USD per person is required with balance due 120 days before the trip		

** **GBP prices** are for guidance only and final price will be based on the exchange rate at time of booking.

CHILDREN Children are admitted from the age of 8 years if accompanied by an adult who will take responsibility and sign a waiver. A 5 % discount on the rate per person is offered for children up to 12 years.

* For an extra level of comfort, you can purchase Preferred Seating on your Antarctic flight. This option offers you a guaranteed aisle or window seat at the front of the aircraft, priority boarding in Punta Arenas, and an amenities kit. Please note that due to the nature of the operation in Antarctica, priority boarding is not available on the return flight. Capacity is limited to rows 2, 3, 4, and 5 of the aircraft. In the case of cancellation of Preferred Seating 120 days or more prior to departure, Antarctica21 will refund 50 % of the amount paid. In the case of cancellation 119 days or less prior to departure, there will be no refund.

SINGLE TRAVELLERS: Single travellers can choose between booking a dedicated Single Cabin. No supplement is applied for single use of dedicated Single Cabins. Or they can book a Twin Cabin for single use. An 85% supplement will be added to the rate per person when booking in a limited number of Porthole and Veranda Cabins on Magellan Explorer and Twin Cabins on Ocean Nova. A 100 % supplement applies when booking all other categories.

Sharing a cabin with another passenger of the same gender is available on Magellan Explorer in Porthole and Veranda Cabins and on Ocean Nova in Twin Cabins. The operator will match your cabin companion. Passengers who book a Twin Cabin on a shared basis are accommodated in single rooms at the hotel in Punta Arenas. Those passengers must pay a Single Hotel Room Supplement that varies based on the departure selected. Please inquire at the time of reservation.

Single travellers who use CPAP machines or other assistive devices, as well as those who have conditions that can be disrupting to others (loud snoring, sleepwalking, etc.) can only book their air-cruise in a Single Cabin or a Twin Cabin for single use. They cannot book on a twin-share basis.



INCLUSIONS & EXCLUSIONS FOR THIS ITINERARY

■ ANTARCTIC CRUISE:

✓ 7 night / 8 Day Antarctic Air-Cruise on the M/V Ocean Nova - Cabin TBC.

Cruise Includes:

- ✓ For air-cruises starting in Punta Arenas, group transfers airport/hotel on Day 1.
- ✓ For air-cruises starting in Punta Arenas, one overnight with breakfast in Punta Arenas at the Cabo de Hornos Hotel or similar, with a welcome dinner including drinks on Day 1.
- ✓ 1 overnight with breakfast in Punta Arenas at the Cabo de Hornos Hotel or similar on the Day of the Scheduled Return Flight from Antarctica.
- ✓ For air-cruises starting in Punta Arenas, enjoy special access to Explorers House.
- ✓ Group transfers airport/hotel on the Day of the Scheduled Return Flight from Antarctica, and group transfers hotel/airport on the last day of the air-cruise.
- ✓ Flight from Punta Arenas to Frei Station on King George Island and/or vice versa as indicated in the program corresponding to each voyage.
- ✓ Ship cruise as indicated in the program corresponding to each voyage.
- ✓ Daily buffet breakfast and lunch on board ship offering a wide choice of dishes.
- ✓ Daily served dinner on board ship offering a choice of three main courses.
- ✓ Wine, beer, juice, and soft drinks served with lunch and dinner on board.
- ✓ Coffee, tea, chocolate, cappuccino, water, and snacks on board ship throughout the expedition.
- ✓ All guided shore excursions.
- ✓ Lectures and entertainment on board. · Comprehensive pre- and post-voyage information material.
- ✓ Loan of waterproof boots for landing in Antarctica.
- ✓ Contingency Plan as described in the page after these inclusions.
- ✓ IAATO passenger fee.

Cruise Excludes:



INCLUSIONS & EXCLUSIONS FOR THIS ITINERARY

- ✓ Anything that is not specifically listed under the “Included in the Rate” section. For example:
- ✓ Accommodation, meals, excursions, and transfers
- ✓ other than those included in the itinerary and the Contingency Plan corresponding to each voyage. Specifically, dinner in Punta Arenas upon return from Antarctica is not included.
- ✓ Beverages purchased at the ship’s bar.
- ✓ Internet connection on board the ship.
- ✓ Personal travel insurance.
- ✓ Extra expenses (communication, laundry, souvenirs, etc.).
- ✓ Gratuities.
- ✓ Visas for Chile and/or Argentina, passport
- ✓ expenses, and any arrival and/or departure tax, if applicable.

Important Note: All itineraries are for guidance only. Programs may vary depending on ice, weather, and wildlife conditions. Landings are subject to site availabilities, permissions, and environmental concerns per IAATO regulations. Official sailing plans and landing slots are scheduled with IAATO prior to the start of the season, but the expedition leader determines the final plan. Flexibility is paramount for expedition cruises.

Cancellation Conditions for this Antarctic Cruise: The following cancellation conditions below apply to the Antarctica section of the trip and are different to and supersede our general booking terms and conditions which apply to the non-Antarctica elements of your trip.

- Cancellation of a reservation must be done in writing. The following terms will apply:
- Cancellation received up to 180 days prior to departure: there will be a full refund of the deposit received, less a \$1,000 USD per person processing fee that will be retained by Antarctica21.
- Cancellation received between 179 and 120 days prior to departure: there will be no refund of the deposit paid.
- Cancellation received between 119 and 90 days prior to departure: there will be a refund of 10% of the amount paid, provided that the final payment has been received.
- Cancellation received between 89 and 60 days prior to departure: there will be a refund of 7.5% of the amount paid, provided that the final payment has been received.



INCLUSIONS & EXCLUSIONS FOR THIS ITINERARY

- Cancellation received between 59 and 30 days prior to departure: there will be a refund of
- 5% of the amount paid, provided that the final payment has been received.
- Cancellation received between 29 and the departure date: there will be no refund whatsoever.
- Upon cancellation, the passenger releases the canceled cabin.
- We strongly recommends all guests to protect their travel investment by purchasing a trip cancellation and interruption insurance policy as protection against unforeseen events.



About the Contingency Plan

Antarctica21, the air cruise operator, has been organising Antarctic air-cruises since 2003. Over these years we have gained extensive experience in the delicate coordination of land, air, and sea operations in the extreme Antarctic environment. While historically most flights have operated on the scheduled day, in some instances weather conditions have required that adjustments to the departure time of Antarctic flights be made to avoid protracted delays. In the unlikely event that the flight to or from Antarctica cannot take place on the scheduled day due to unfavourable weather conditions, we will apply a Contingency Plan.

The Contingency Plan is included in the cost of your expedition. The primary goal of the plan is to provide an engaging and comfortable travel experience while we adapt to the weather and we keep you informed of developments, whether in Punta Arenas or Antarctica. A change in the flight schedule can impact travel to Antarctica or return to Punta Arenas, and the plan includes a range of activities determined by the circumstances. Additionally, the Contingency Plan offers you financial protection by providing a refund should weather conditions prevent us from reaching Antarctica.

In case the outbound flight to Antarctica is moved forward

In some cases, it may be necessary to move forward the Antarctic flight to the afternoon or evening of Day 1 of the itinerary. This will result in an early departure from Punta Arenas and early arrival in Antarctica. It is one reason why it is important that guests arrive in Punta Arenas by 2 PM on Day 1 of the itinerary.

In case the outbound flight to Antarctica is delayed The group will remain in Punta Arenas while waiting for an improvement in the weather and for the opportunity to fly to Antarctica. Included are accommodation, meals, and, when possible, based on the circumstances, guided excursions to local attractions. If by 2 PM on Day 4 of the itinerary it is still impossible to depart for Antarctica, the trip will be interrupted, and the cruise fare will be refunded.

In case the return flight to Punta Arenas is moved forward

In those cases when the forecast suggests the likelihood of unfavourable weather conditions in Antarctica persisting for several days, the flight back to Punta Arenas may be moved forward to the previous day to avoid a protracted delay in Antarctica. Accommodation is included upon arrival. All other inclusions will remain per the original itinerary. No refund will be extended.

In case the return flight to Punta Arenas is delayed The group will remain in Antarctica and wait for the opportunity to fly to Punta Arenas. In the unlikely event that the delay exceeds 2 days and the weather forecast indicates the impossibility to fly over several more days, the captain of the vessel may decide to sail back to South America for safety reasons. Included are meals and accommodation on the ship and local excursions. Upon arrival in Punta Arenas, the trip will end at the airport. Travellers are responsible for any expenses associated with the rescheduling of their airline tickets or onward travel plans.

