

M/V ORTELIUS

SEARCH FOR EMPEROR PENGUINS BY HELICOPTER

10 NIGHTS | TRIP CODE: OTL22-23

10th - 20th NOVEMBER 2023

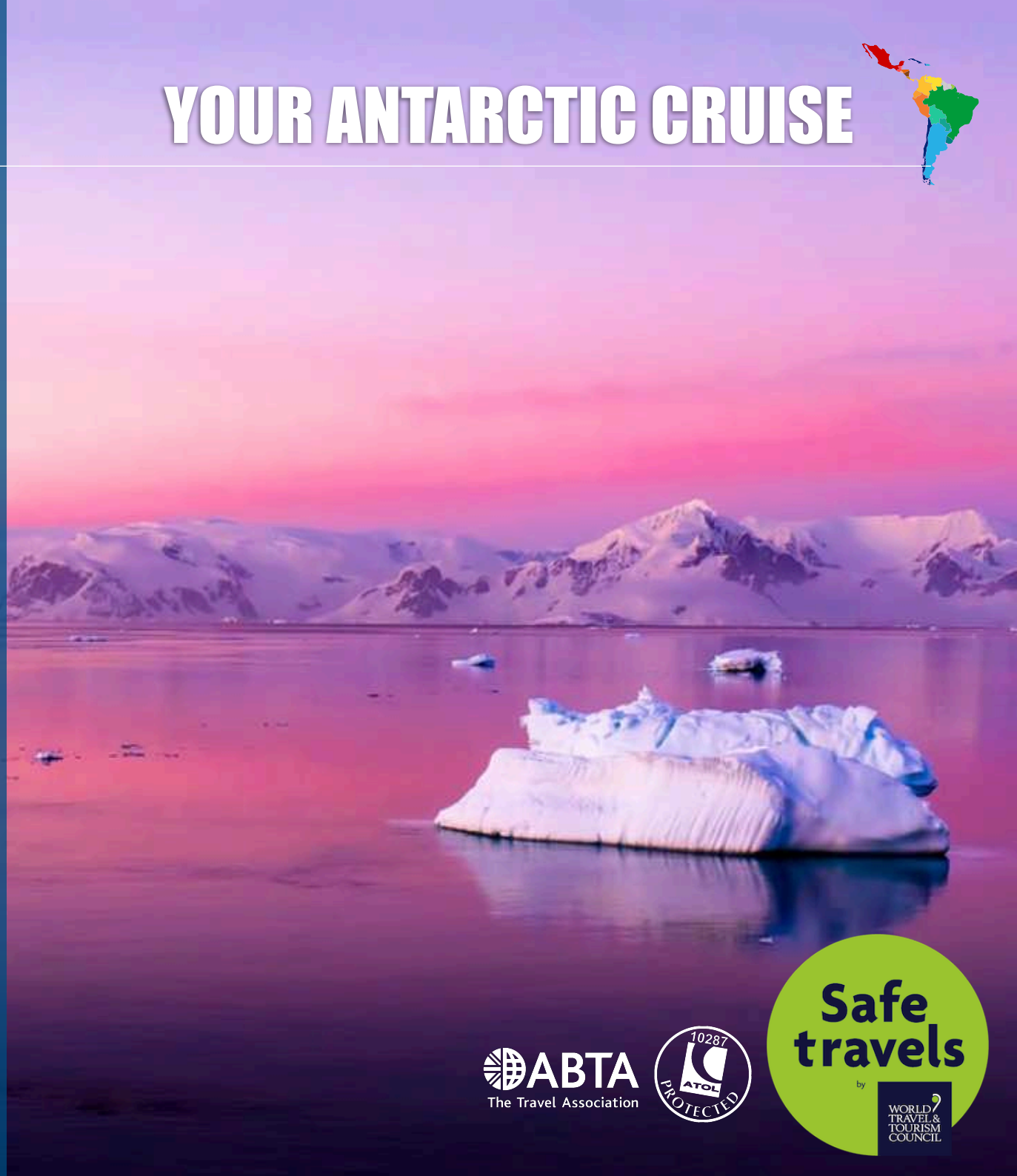
USHUAIA - USHUAIA

A true expedition, our Weddell Sea cruise sets out to explore the range of the Emperor Penguins near Snow Hill Island. We will visit the area via helicopter and see a variety of other birds and penguins including Adélies and Gentoos.

PLEASE NOTE:

All itineraries are for guidance only. Programs may vary depending on ice, weather, and wildlife conditions. Landings are subject to site availabilities, permissions, and environmental concerns per IAATO regulations. Official sailing plans and landing slots are scheduled with IAATO prior to the start of the season, but the expedition leader determines the final plan. Flexibility is paramount for expedition cruises. The average cruising speed for our vessel is 10.5 knots.

YOUR ANTARCTIC CRUISE



M/V ORTELIUS - ABOUT THE SHIP

The ice-strengthened vessel "Ortelius" is an excellent vessel for Polar expedition cruises in the Arctic and Antarctica, providing us with possibilities to adventure in remote locations such as the Ross Sea and Franz Josef Land.

"Ortelius" was built in Gdynia, Poland in 1989, was named "Marina Svetaeva", and served as a special purpose vessel for the Russian Academy of Science. The vessel is re-flagged and renamed "Ortelius". As Plancius, Ortelius was a Dutch / Flemish cartographer. Abraham Ortelius (1527 – 1598) published the first modern world atlas, the Theatrum Orbis Terrarum or Theatre of the World in 1570. At that time, the atlas was the most expensive book ever printed.

The vessel has the highest ice-class notation (UL1 equivalent to 1A) and is therefore very suitable to navigate in solid one-year sea ice and loose multi year pack ice. "Ortelius" is a great expedition vessel for 108 passengers with lots of open-deck spaces.

The vessel is manned by 20 highly experienced international nautical crew, 19 international hotel crew, including stewardesses, 7 expedition staff in Antarctica (1 expedition leader and 6 guides/lecturers), for the Arctic we will have 8 expedition staff (1 expedition leader and 7 guides/lecturers) and 1 doctor.

The vessel offers simple but comfortable cabins and public spaces • 4 quadruple cabins with bunk beds (these can also be used as triple or twin cabins) • 26 twin porthole cabin with 2 single lower berths • 12 twin cabins with windows and 2 single lower berths • 2 twin deluxe cabins with windows and 2 single lower berths • 6 superior cabins with double beds. All cabins are spacious outside cabins with a minimum of two portholes or windows per cabin and all cabins have private shower and toilet.

"Ortelius" offers a comfortable hotel standard, with two restaurants, a bar/lecture room. Our voyages are primarily developed to offer our passengers a quality exploratory wildlife program, trying to spend as much time ashore as possible. As the number of passengers is limited to approximately 108 on the "Ortelius", flexibility assures maximum wildlife opportunities.

SPECIFICATIONS

Registered: The Netherlands

Length: 90.95 meters

Breadth: 17.20 meters

Draft: 5.4 meters

Ice class: UL1 (equivalent to 1A)

Displacement: 4,090 tons

Propulsion: 6 ZL 40/48 SULZER

Average cruising speed: 10,5 knots

Passengers: 108 in 50 cabins

Crew, guides, doctor: 41 / 8 / 1

Various decks refurbished 2012-2017-2019

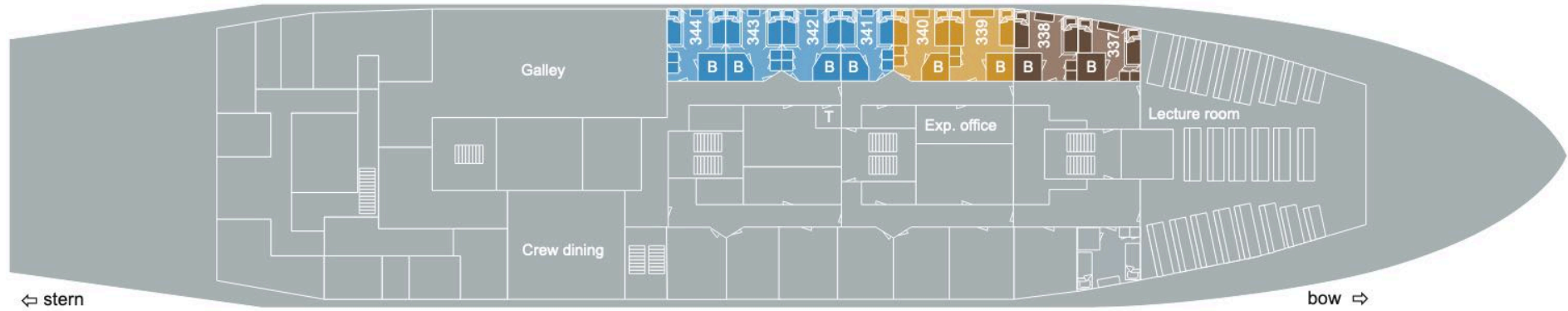


M/V ORTELIUS



M/V ORTELIUS - DECK PLANS

DECK 3

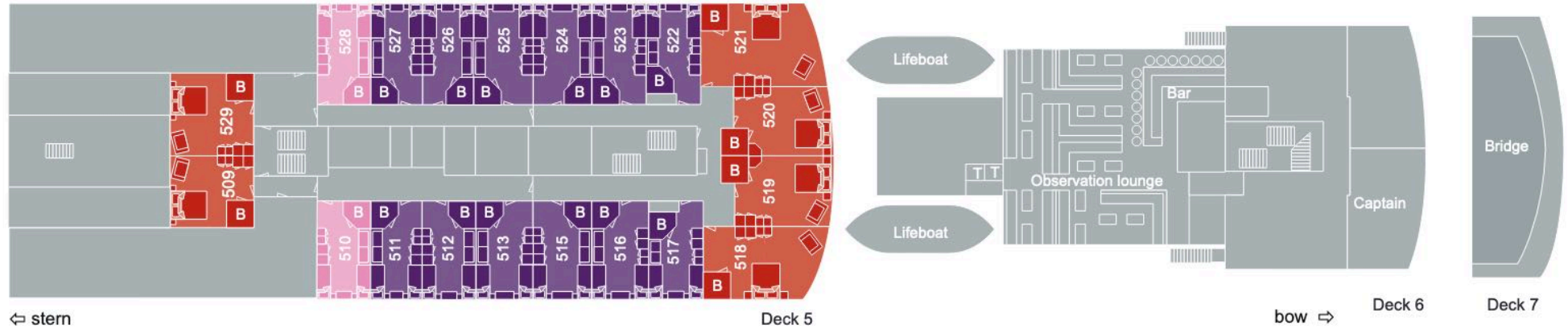


DECK 4



M/V ORTELIUS - DECK PLANS

DECK 5, 6 & 7

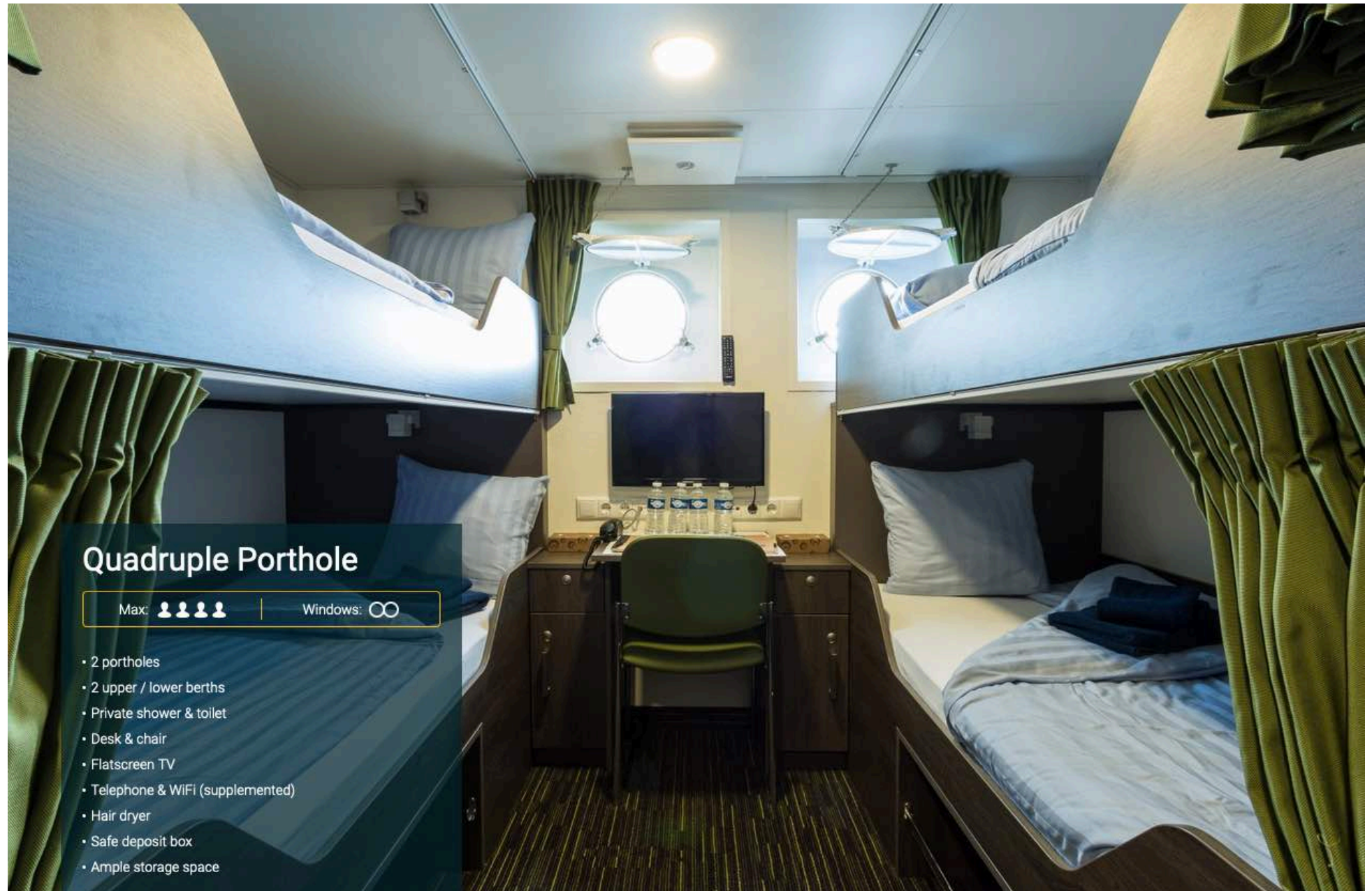


KEY

m/v Ortelius deckplan		
■ Superior		Lower berth
■ Twin Deluxe		Upper and lower berth
■ Twin Window		Toilet
■ Twin Porthole		Double bed
■ Twin Porthole plus additional third bed		Bathroom
■ Quadruple Porthole		



M/V ORTELIUS - CABINS



Quadruple Porthole

Max: 

Windows: 

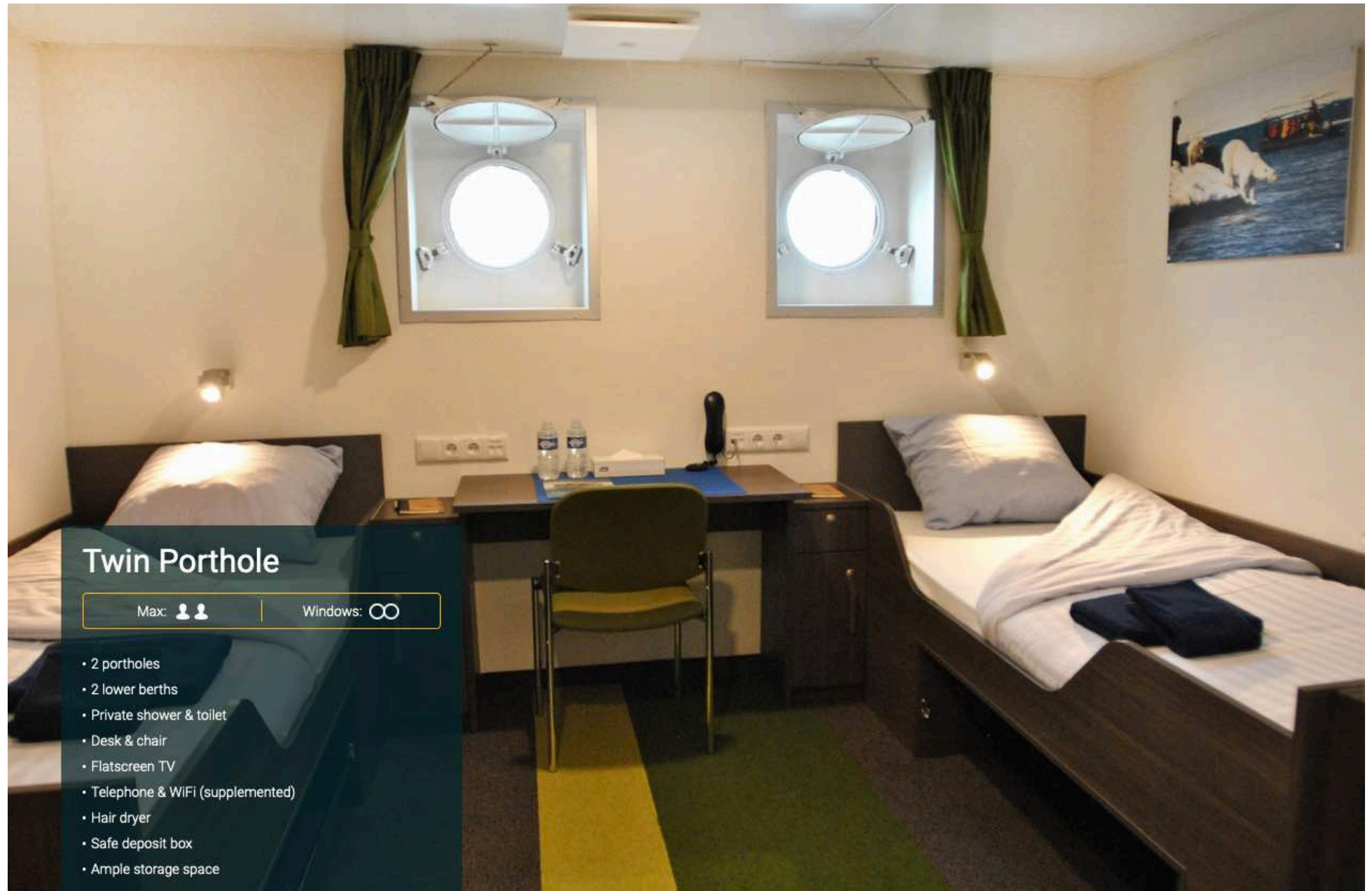
- 2 portholes
- 2 upper / lower berths
- Private shower & toilet
- Desk & chair
- Flatscreen TV
- Telephone & WiFi (supplemented)
- Hair dryer
- Safe deposit box
- Ample storage space



THELATINAMERICATRAVELCOMPANY.COM | Email: info@thelatinamericatraveltravelcompany.com
UK ☎: +44 (0) 20 8191 7772 | Part of HeadsEast Ltd - UK business registration: 6717612



M/V ORTELIUS - CABINS



Twin Porthole

Max: 

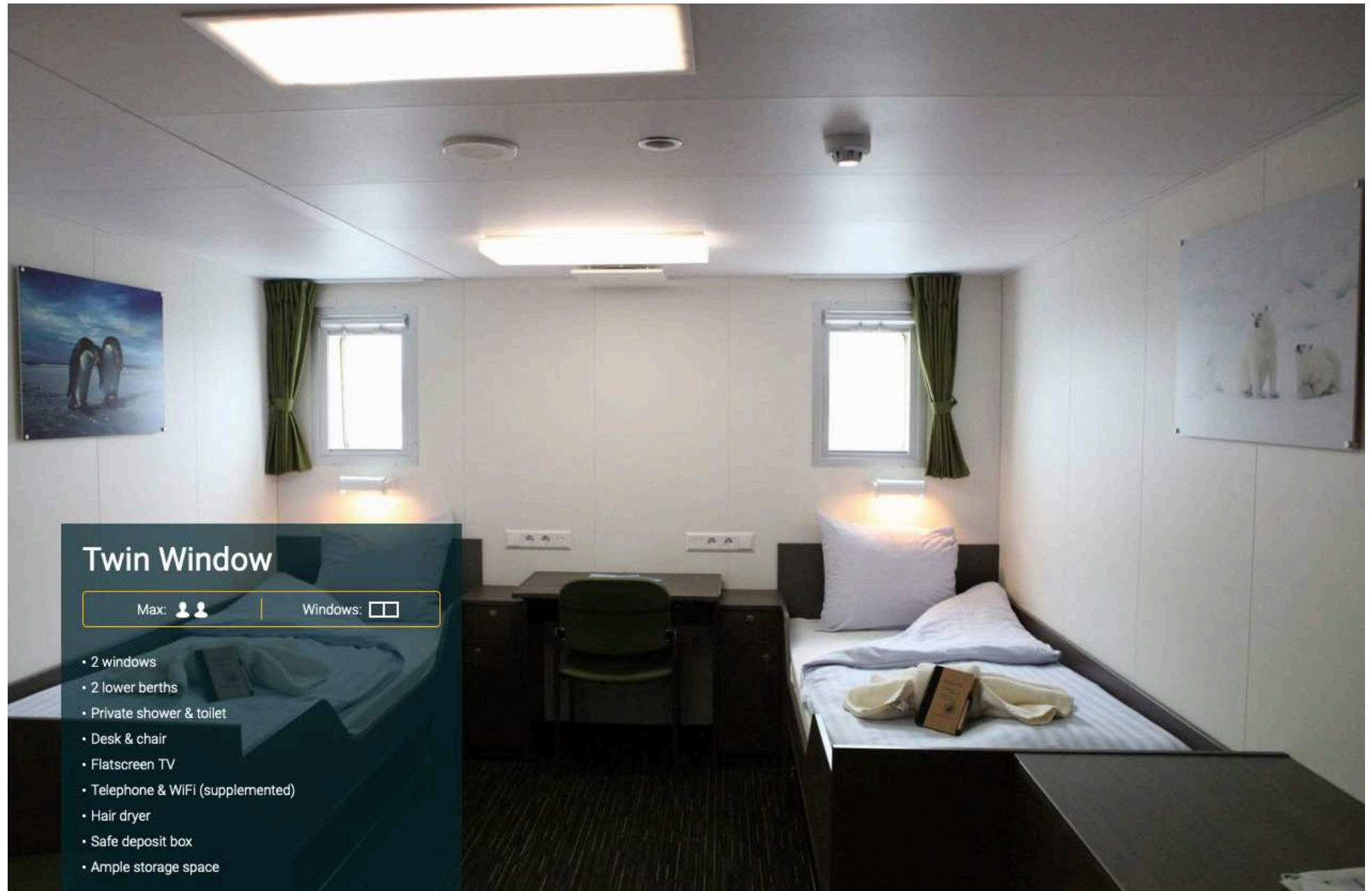
Windows: 

- 2 portholes
- 2 lower berths
- Private shower & toilet
- Desk & chair
- Flatscreen TV
- Telephone & WiFi (supplemented)
- Hair dryer
- Safe deposit box
- Ample storage space



THELATINAMERICATRAVELCOMPANY.COM | Email: info@thelatinamericatraveltravelcompany.com
UK ☎: +44 (0) 20 8191 7772 | Part of HeadsEast Ltd - UK business registration: 6717612





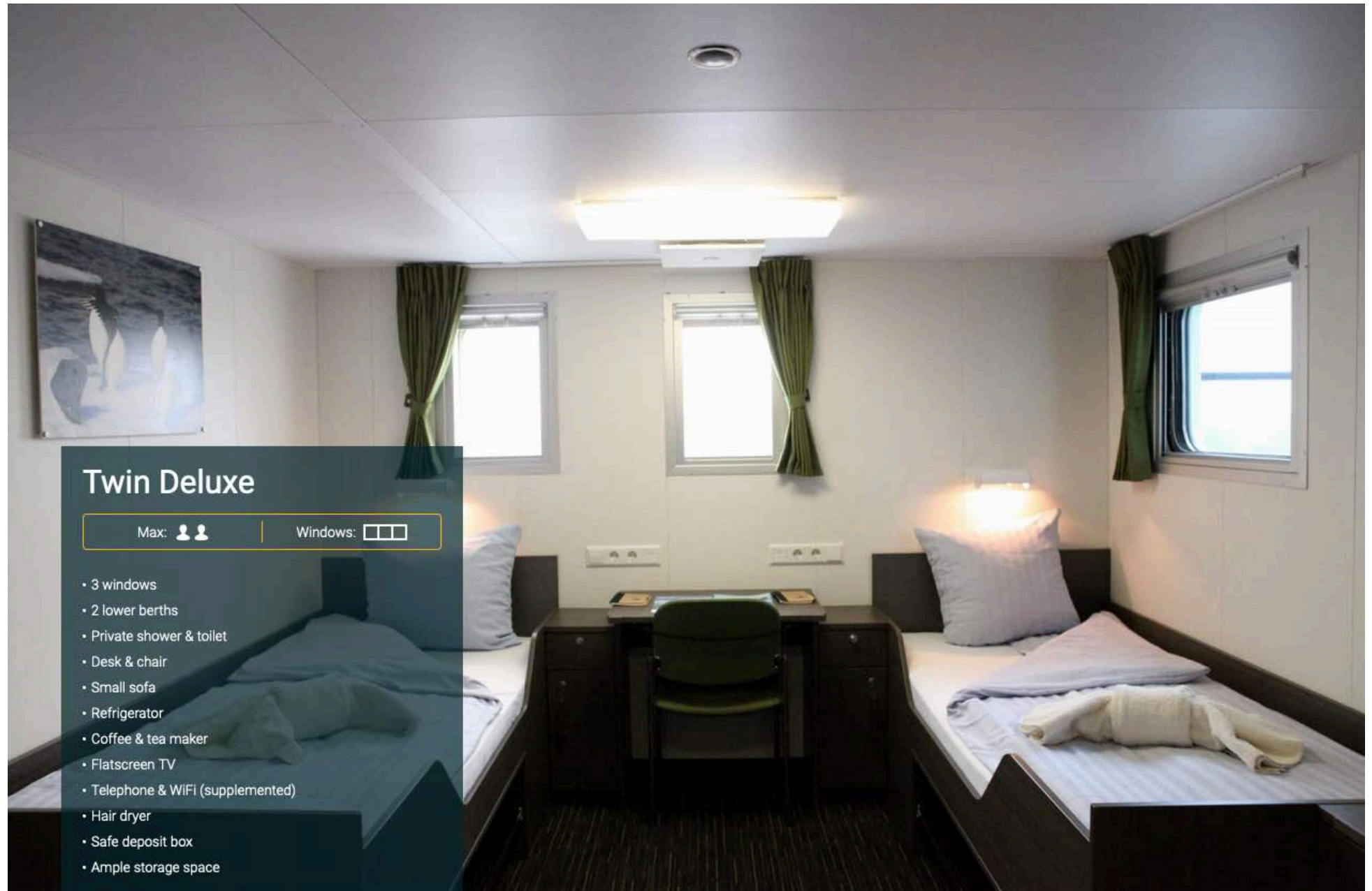
Twin Window

Max: 

Windows: 


- 2 windows
- 2 lower berths
- Private shower & toilet
- Desk & chair
- Flatscreen TV
- Telephone & WiFi (supplemented)
- Hair dryer
- Safe deposit box
- Ample storage space





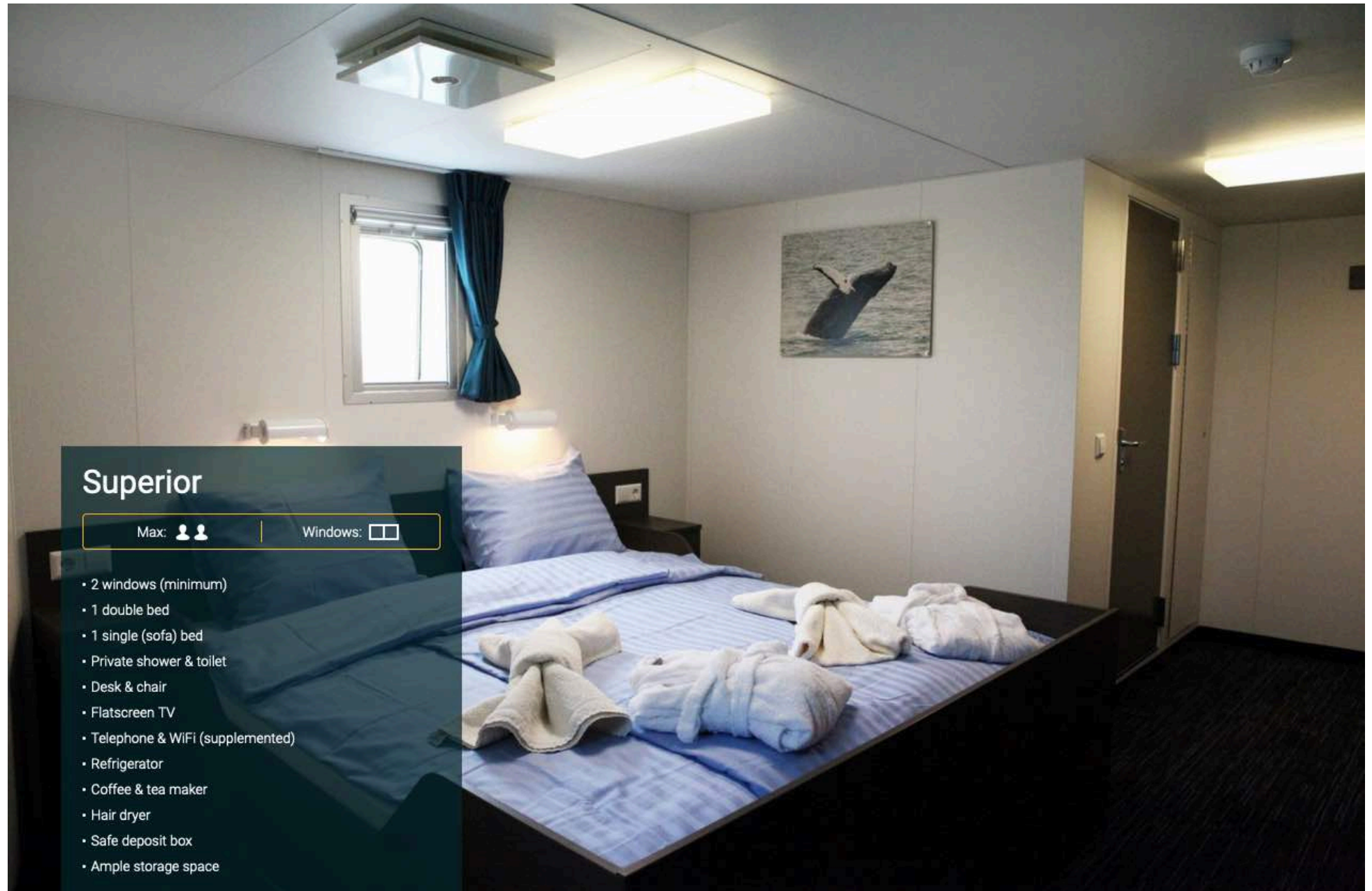
Twin Deluxe

Max: 


Windows: 

- 3 windows
- 2 lower berths
- Private shower & toilet
- Desk & chair
- Small sofa
- Refrigerator
- Coffee & tea maker
- Flatscreen TV
- Telephone & WiFi (supplemented)
- Hair dryer
- Safe deposit box
- Ample storage space





Superior

Max: 

Windows: 

- 2 windows (minimum)
- 1 double bed
- 1 single (sofa) bed
- Private shower & toilet
- Desk & chair
- Flatscreen TV
- Telephone & WiFi (supplemented)
- Refrigerator
- Coffee & tea maker
- Hair dryer
- Safe deposit box
- Ample storage space



Ortelius: a Vessel with Comfort and Character

Please be aware that a small number of cabins may have a partially obstructed view due to the size of the windows and the design requirements of the ship. For example, some windows may be partly obstructed in the lower half by a gangway. The best view is always on the outer deck or the bridge. Though our voyages are primarily meant to offer our passengers an exploratory wildlife program with as much time ashore as possible, Ortelius offers all the comforts of a standard hotel — along with a bar and lecture room. Flexibility assures maximum wildlife opportunities. As such, Ortelius carries 10 Zodiacs with 60hp Yamaha engines.

Age & Nationality

Passengers on a typical voyage range from in their 30s to their 80s, with the majority usually between 45 — 65. Our expeditions attract independent travellers from around the globe who are characterised by a strong interest in exploring remote regions. The camaraderie that develops on board is an important part of the Oceanwide experience, and many passenger groups include several nationalities.

What to Wear

In keeping with the spirit of expedition, dress on board is informal. Bring casual and comfortable clothing for all activities, and keep in mind that much of the scenery can be appreciated from deck — which can be slippery. Bring sturdy shoes with no-slip soles, and make sure your parka is never far away in case one of our crew shouts “Whales!” over the loudspeaker and you have to dash outside in a moment’s notice. Opt for layers, as it is comfortably warm aboard the ship though often cold on deck.

Non-Smoking Policy

We have a non-smoking policy inside all our vessels, though you can smoke in certain designated areas.

How to Pay

Refreshments and souvenirs will be charged to your cabin. The day before departure you can settle your bill with the hotel manager, paying by credit card (Visa or MasterCard) or cash (euro, or in some cases dollar). Though the prices and standard currency on board is in the euro, other currencies may be accepted at the discretion of the hotel manager, at prevailing rates.

Electric Current

The electrical supply aboard ship is 220v, 60Hz. Electrical outlets are standard European with two thick round pins, so some passengers may need a 220v/110v converter.

Gratuities

The customary gratuity to the ship’s service personnel is made as a blanket contribution at the end of the voyage and is divided among the crew. Tipping is a personal matter, and the amount you wish to give is at your sole discretion. As a generally accepted guideline, we suggest 8 — 10 euros per passenger per day.

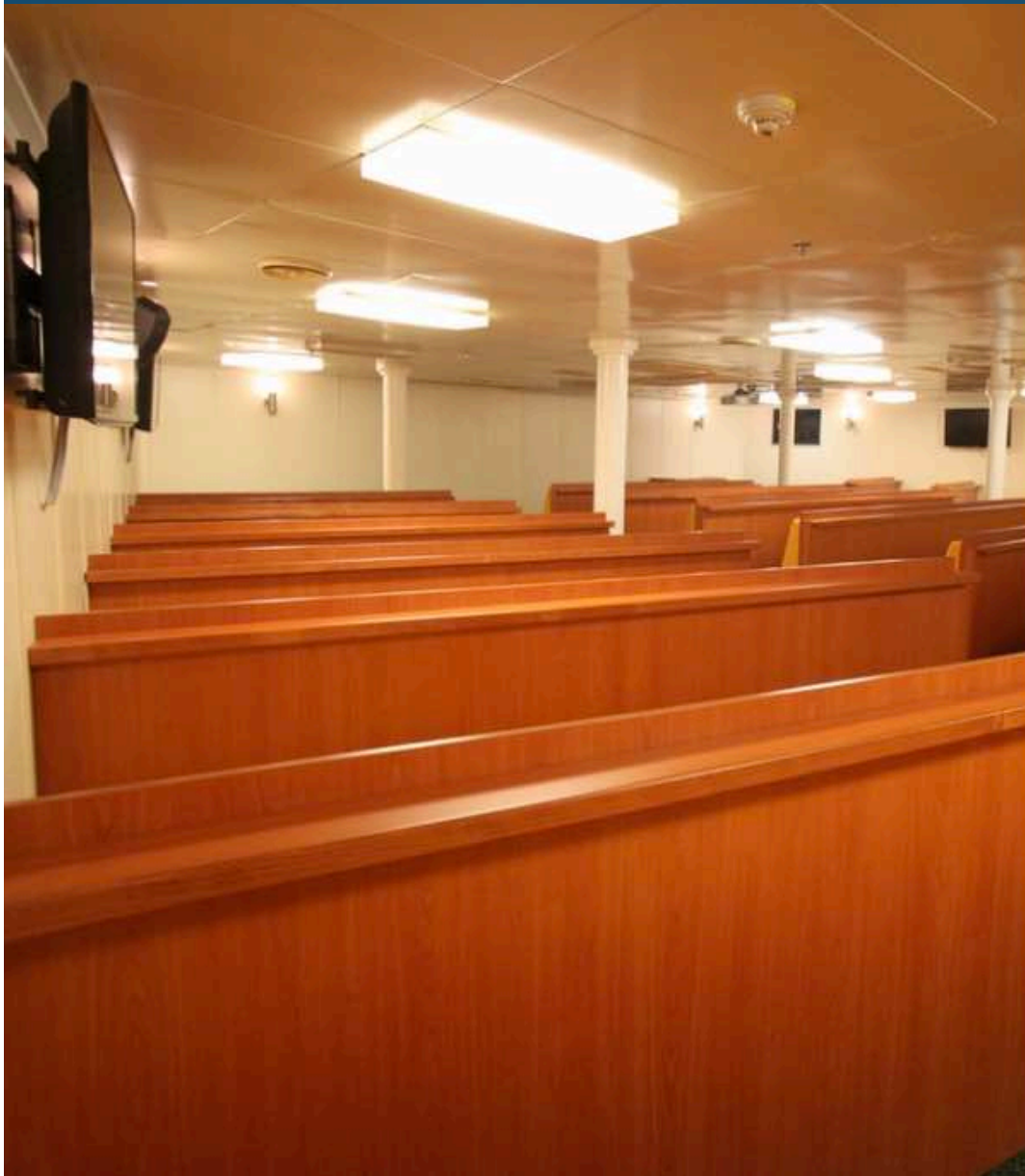
Your Physical Condition

You must be in good overall health and be able to walk several hours per day. The expedition is ship-based and physically not very demanding, but we spend as much time as possible on shore. You are, however, welcome to remain aboard the ship if you prefer. To join most excursions you must be able to get up and down the steep gangway — from the ship to the water level — to board the Zodiacs. Staff will assist you in and out of the boats, and boarding will become progressively easier with practice, but conditions on shore can be slippery and rocky. Remember, you will be traveling in remote areas without access to sophisticated medical facilities, so you must not join this expedition if you have a life-threatening condition or need daily medical treatment.

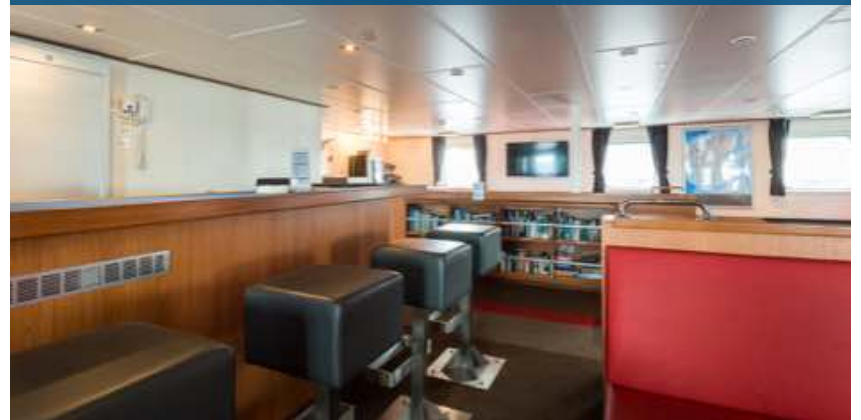


M/V ORTELIUS - FACILITIES

LECTURE THEATRE



BAR LOUNGE



DINING





YOUR DETAILED DAY BY DAY ITINERARY

DAY 1

10th NOVEMBER 2023

JOIN SHIP

END OF THE WORLD, START OF THE JOURNEY SOUTH

Your voyage begins where the world drops off. Ushuaia, Argentina, reputed to be the southernmost city on the planet, is located on the far southern tip of South America. Starting in the afternoon, you embark from this small resort town on Tierra del Fuego, nicknamed “The End of the World,” and sail the mountain-fringed Beagle Channel for the remainder of the evening.

IMPORTANT NOTE: All itineraries are for guidance only. Programs may vary depending on ice, weather, and wildlife conditions. Landings are subject to site availabilities, permissions, and environmental concerns per IAATO regulations. Official sailing plans and landing slots are scheduled with IAATO prior to the start of the season, but the expedition leader determines the final plan. Flexibility is paramount for expedition cruises. The average cruising speed for our vessel is 10.5 knots.

 **Meals Included:** Dinner.

OVERNIGHT

M/V ORTELIUS



A classic old expedition vessel for the romantics adventurers who don't mind more basic, but still clean and comfortable, facilities.

[CLICK HERE TO LEARN MORE](#)



Photos for guidance only & not necessarily the room booked



YOUR DETAILED DAY BY DAY ITINERARY

DAY 2

11th NOVEMBER 2023

AT SEA

PATH OF THE POLAR EXPLORERS - CROSSING THE DRAKE PASSAGE

Over the next two days on the Drake Passage, you enjoy some of the same experiences encountered by the great polar explorers who first charted these regions: cool salt breezes, rolling seas, maybe even a fin whale spouting up sea spray. After passing the Antarctic Convergence – Antarctica’s natural boundary, formed when north-flowing cold waters collide with warmer sub-Antarctic seas – you are in the circum-Antarctic upwelling zone.

Not only does the marine life change, the avian life changes too. Wandering albatrosses, grey-headed albatrosses, black-browed albatrosses, light-mantled sooty albatrosses, cape pigeons, southern fulmars, Wilson’s storm petrels, blue petrels, and Antarctic petrels are a few of the birds you might see.

 **Meals Included:** Breakfast, Lunch & Dinner.

OVERNIGHT

M/V ORTELIUS



A classic old expedition vessel for the romantics adventurers who don't mind more basic, but still clean and comfortable, facilities.

[CLICK HERE TO LEARN MORE](#)



Photos for guidance only & not necessarily the room booked





YOUR DETAILED DAY BY DAY ITINERARY

DAY 3

12th NOVEMBER 2023

 **AT SEA**

CONTINUE ACROSS THE DRAKE PASSAGE

THE DRAKE PASSAGE Sailing south from the entrance of the Strait of Magellan, Spanish navigator Francisco de Hoces discovered this passage in 1525, making him the first European to pass through it. For this reason, it appears as Mar de Hoces in most Spanish and Spanish American maps and sources.

The passage received its English name from the 16th-century privateer Francis Drake during his circumnavigation. After passing through the Strait of Magellan with Marigold, Elizabeth, and his flagship Golden Hind, Drake entered the Pacific Ocean and was blown far south in a tempest. Marigold was lost, and Elizabeth abandoned the fleet. Only Drake's Golden Hind entered the passage. This incident demonstrated to the English that there was open water south of South America.

The first recorded voyage through the passage was that of Eendracht, captained by the Dutch navigator Jacob Le Maire in 1616, naming Cape Horn in the process.

 **Meals Included:** Breakfast, Lunch & Dinner.

OVERNIGHT

M/V ORTELIUS



A classic old expedition vessel for the romantics adventurers who don't mind more basic, but still clean and comfortable, facilities.

[CLICK HERE TO LEARN MORE](#)



Photos for guidance only & not necessarily the room booked



THELATINAMERICATRAVELCOMPANY.COM | Email: info@thelatinamericatraveltravelcompany.com
UK ☎: +44 (0) 20 8191 7772 | Part of HeadsEast Ltd - UK business registration: 6717612



DAY 4

13th NOVEMBER 2023

ANTARCTICA

ARRIVAL TO THE ANTARCTIC PENINSULA & BEGIN EXPLORING

Sail into the Weddell Sea via the Antarctic Sound. Here huge tabular icebergs herald your arrival to the eastern side of the Antarctic Peninsula. During this part of the cruise, the search is on for emperor penguins. Using both the vessel and helicopters, there's a good chance you'll find them. You might also enjoy scenic flights, and if conditions allow, helicopter landings in locations otherwise out of reach this time of year.

Our helicopter capability on m/v Ortelius gives you the rare chance to see the famed emperor penguin rookery south of Snow Hill Island, numbering around 4,000 breeding pairs. Heavy ice may prevent entrance to this area from the Weddell Sea, and ice at the rookery itself might break up and start to melt earlier than expected. With this in mind, the aim is to stop the vessel between the Antarctic Sound and James Clark Ross Island, close to the ice edge, and find emperor penguins on their way to open water. The thrilling helicopter flights make this search possible, enabling you to land in locations otherwise inaccessible this early in the season.

If ice conditions are favourable and the route to Snow Hill Island is free of multi-year pack ice, you have the chance for ship-to-shore helicopter transfers to Snow Hill Island (roughly 45 minutes walking distance from the emperor penguin rookery). If successful, this is a once-in-a-lifetime experience. But please remember that nature writes the final itinerary out here: Attempts to reach Snow Hill Island during the voyages of 2012 – 19 did not always succeed. However, in 2013 and three years in a row (2017 – 2019) conditions were favourable to land by helicopter on Snow Hill Island and to visit the emperor penguin rookery.

 **Meals Included:** Breakfast, Lunch & Dinner.

OVERNIGHT

M/V ORTELIUS



A classic old expedition vessel for the romantics adventurers who don't mind more basic, but still clean and comfortable, facilities.

[CLICK HERE TO LEARN MORE](#)



Photos for guidance only & not necessarily the room booked



ANTARCTICA SCENERY



THELATINAMERICATRAVELCOMPANY.COM | Email: info@thelatinamericatraveltravelcompany.com
UK ☎: +44 (0) 20 8191 7772 | Part of HeadsEast Ltd - UK business registration: 6717612



DAY 5

14th NOVEMBER 2023

ANTARCTICA

HELICOPTERS OPEN UP A RANGE OF POSSIBILITIES

Helicopter flights are a true trip changer, and may include some of the following:

The west slopes of the Antarctic Sound – The western side of this area is only rarely seen from the air, though the landscape is truly worth the flight: Layered sandstones, lava flows, glaciers, icebergs, and pack-ice extend as far as the eye can see. There are often individual emperor penguins and Adélie penguins on the ice floes, as well as kelp gulls, skuas, and various breeds of petrel. Jagged mountain peaks stab through the snow, and enormous walls of ice lie shattered on the slopes below.

Duse Bay – A soaring helicopter flight may deposit you on a rocky hillock close to an old refuge hut overlooking this bay. There's still a lot of snow and ice this time of year, but much of the walk in this location is over frost-shattered rock covered with lichen of all shapes and colours.

Seymour Island – This is where the Swedish Antarctic Expedition of 1901 – 4 wintered under harrowing polar conditions. Sedimentary rock, fossils, and expansive views define this location.

 **Meals Included:** Breakfast, Lunch & Dinner.

OVERNIGHT

M/V ORTELIUS



A classic old expedition vessel for the romantics adventurers who don't mind more basic, but still clean and comfortable, facilities.

[CLICK HERE TO LEARN MORE](#)



Photos for guidance only & not necessarily the room booked



YOUR DETAILED DAY BY DAY ITINERARY

DAY 6 & 7

15th & 16th NOVEMBER 2023

ANTARCTICA

FURTHER HELICOPTER EXPLORATION DEPENDING ON CONDITIONS

If conditions allow for deeper ventures into the Weddell Sea, Zodiac trips may include:

Devil Island – Home to a large colony of Adélie penguins, this island offers a magnificent vantage point for hikers willing to foot it to the top of the hill. Melting ice sometimes forms a waterfall dropping from the cliffs close to Cape Well-met.

Brown Bluff – Maybe the most scenic location in the entire northern tip of the Antarctic Continent: sheer canyon walls, fallen boulders, beautiful volcanic creations capped with ice. A large Adélie penguin rookery lives here, with gentoo penguins and nesting snow petrels also to be found.

Gourdin Island – Chinstrap, gentoo, and Adélie penguins love this island, which is yet another landing option for your continuing Antarctic adventure.

Esperanza Base – This Argentine research station, which operates year-round and is one of only two civilian settlements in Antarctica, could serve as an alternative landing site.

 **Meals Included:** Breakfast, Lunch & Dinner.

OVERNIGHT

M/V ORTELIUS



A classic old expedition vessel for the romantics adventurers who don't mind more basic, but still clean and comfortable, facilities.

[CLICK HERE TO LEARN MORE](#)



Photos for guidance only & not necessarily the room booked



THELATINAMERICATRAVELCOMPANY.COM | Email: info@thelatinamericatraveltravelcompany.com
UK ☎: +44 (0) 20 8191 7772 | Part of HeadsEast Ltd - UK business registration: 6717612





YOUR DETAILED DAY BY DAY ITINERARY

ALTERNATIVE DAY 5 & 6

ANTARCTICA

ALTERNATE PROGRAM FOR DAYS 5 & 6 IF THE ROUTE TO SNOW HILL ISLAND IS FREE OF MULTI-YEAR PACK ICE – LESS THAN 50 % PROBABILITY

Helicopters provide an advantage in reaching the emperor penguin colony, but nature makes the rules in Antarctica. If conditions are favourable, you'll spend the first two days at the penguin rookery. The helicopter operation takes a full day, and the flight duration is approximately 15 minutes.

Each helicopter can accommodate 4 – 6 passengers per flight, and the landing site is carefully chosen so that the penguins are not disturbed. Upon arrival to the site, it is about a 45-minute walk to the rookery.

Please keep in mind that you are in the world's most remote area: There are no guarantees. Conditions may change rapidly, which can have a profound impact on our helicopter operations. It is important to understand and respect this. Safety is our greatest concern, and no compromises can be made.

 **Meals Included:** Breakfast, Lunch & Dinner.

OVERNIGHT

M/V ORTELIUS



A classic old expedition vessel for the romantics adventurers who don't mind more basic, but still clean and comfortable, facilities.

[CLICK HERE TO LEARN MORE](#)



Photos for guidance only & not necessarily the room booked



DAY 8

17th NOVEMBER 2023

DECEPTION ISLAND

HEAD INTO THE DRAKE AGAIN VIA DECEPTION ISLAND

In the morning, you sail to Deception Island for the last landing of the voyage, either at Pendulum Cove or Whalers Bay. Conditions on the Drake Passage determine the exact time of departure.

 **Meals Included:** Breakfast, Lunch & Dinner.

OVERNIGHT

M/V ORTELIUS



A classic old expedition vessel for the romantics adventurers who don't mind more basic, but still clean and comfortable, facilities.

[CLICK HERE TO LEARN MORE](#)



Photos for guidance only & not necessarily the room booked



YOUR DETAILED DAY BY DAY ITINERARY

DAY 9

18th NOVEMBER 2023

AT SEA

HEAD BACK ACROSS THE DRAKE PASSAGE TO USHUAIA

Your return voyage across the Drake Passage is far from lonely. While crossing the Drake, you're again greeted by the vast array of seabirds remembered from the passage south. But they seem a little more familiar to you now, and you to them.

 **Meals Included:** Breakfast, Lunch & Dinner.



OVERNIGHT

M/V ORTELIUS



A classic old expedition vessel for the romantics adventurers who don't mind more basic, but still clean and comfortable, facilities.

[CLICK HERE TO LEARN MORE](#)



Photos for guidance only & not necessarily the room booked



THELATINAMERICATRAVELCOMPANY.COM | Email: info@thelatinamericatraveltravelcompany.com
UK ☎: +44 (0) 20 8191 7772 | Part of HeadsEast Ltd - UK business registration: 6717612



YOUR DETAILED DAY BY DAY ITINERARY

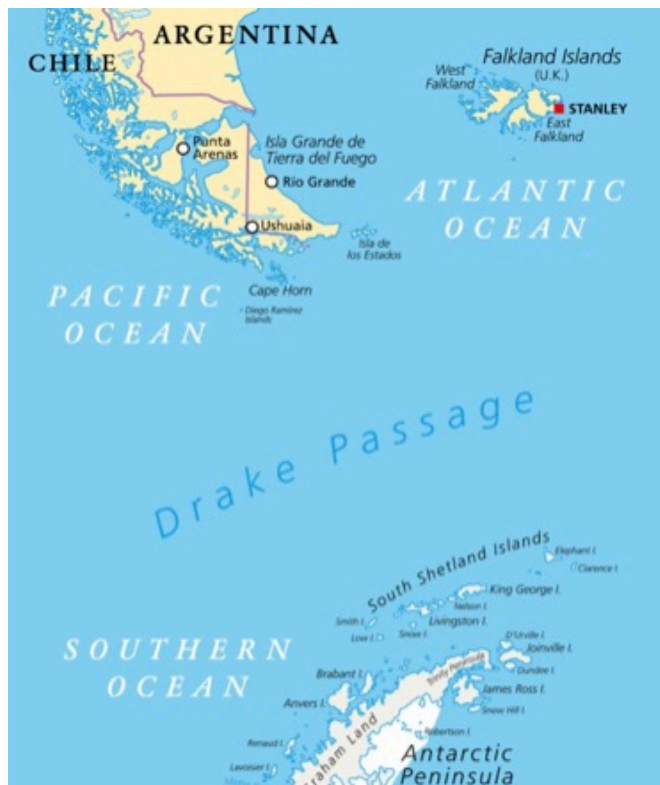
DAY 10

19th NOVEMBER 2023

 **AT SEA**

LAST DAY ON THE DRAKE BEFORE ARRIVAL IN ARGENTINA TOMORROW

 **Meals Included:** Breakfast, Lunch & Dinner.



OVERNIGHT

M/V ORTELIUS



A classic old expedition vessel for the romantics adventurers who don't mind more basic, but still clean and comfortable, facilities.

[CLICK HERE TO LEARN MORE](#)



Photos for guidance only & not necessarily the room booked



THELATINAMERICATRAVELCOMPANY.COM | Email: info@thelatinamericatraveltravelcompany.com
UK ☎: +44 (0) 20 8191 7772 | Part of HeadsEast Ltd - UK business registration: 6717612



DAY 11

20th NOVEMBER 2023

USHUAIA

ARRIVAL BACK IN ARGENTINA

Every adventure, no matter how grand, must eventually come to an end. It's now time to disembark in Ushuaia, but with memories that will accompany you wherever your next adventure lies.

On arrival a transfer to your hotel with the rest of the day free to get used to dry land again!

 **Meals Included:** Breakfast.



"Antarctica is without doubt the most amazing trip I have made anywhere in the world and totally unique from every aspect and I will be going back to see more of the frozen continent on a regular basis. It is both a privilege and a responsibility to be able to send our clients."



antarctica
flora & fauna
INFOGRAPHIC

ANIMALS:

hourglass dolphin, weddell seal, crabeater seal, leopard seal, ross seal

SEA LIFE:

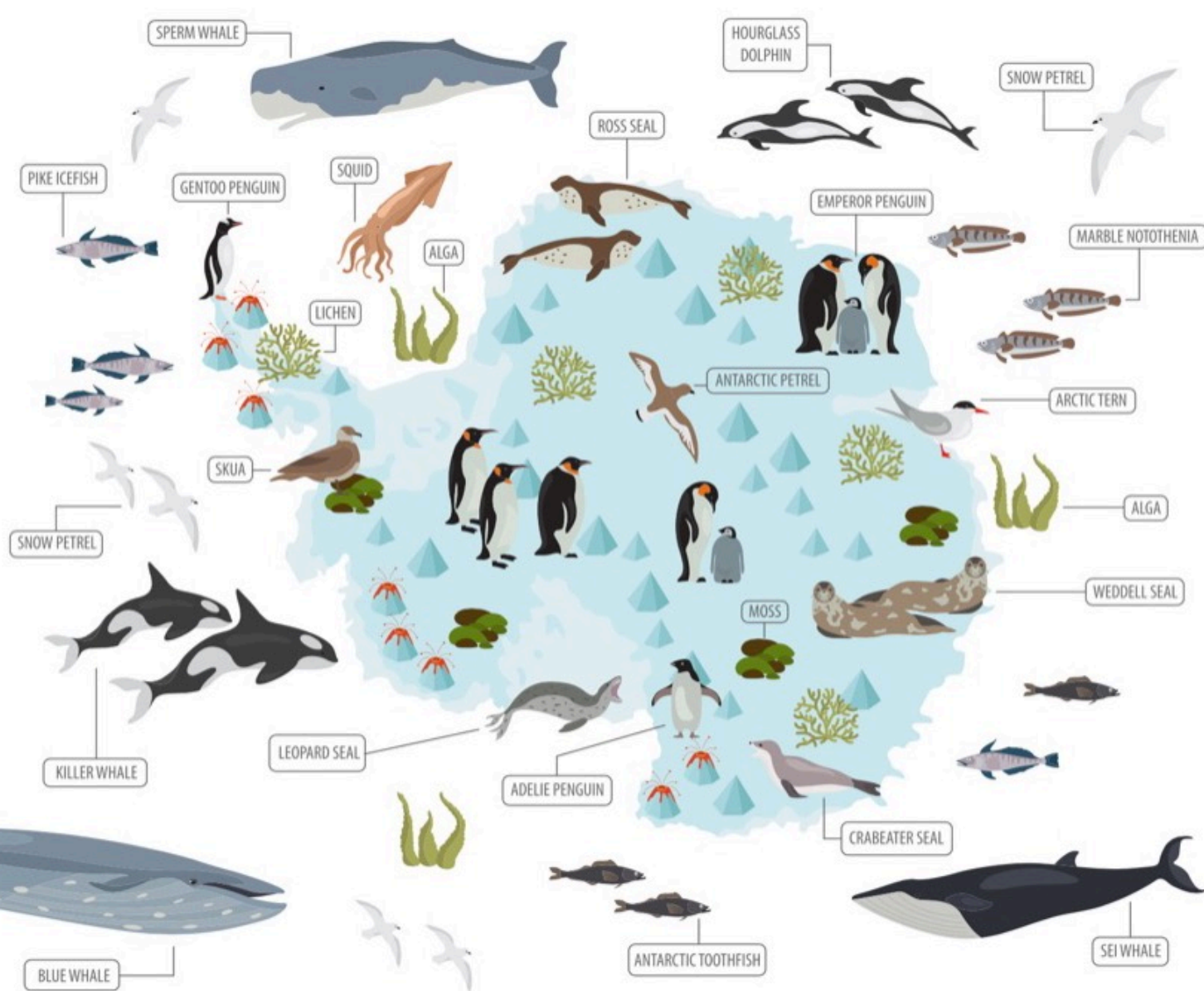
sperm whale, blue whale, killer whale, squid, sei whale, marble notothenia, antarctic toothfish, pike icefish

BIRDS:

emperor penguin, adelic penguin, gentoo penguin, antarctic petrel, snow petrel, skua, arctic tern

PLANTS:

lichen, moss, alga



TRIP CODE: OTL22-23: EMPEROR PENGUINS BY HELICOPTER - START & FINISH DATES

Starts Ushuaia 10th November 2023 and Finishes Ushuaia 20th November 2023 - Guided in: English

CABIN	EURO	GBP**	USD**
4 berth Quadruple Porthole - price per berth	€10,400	£9,360	US\$11,440
3 berth Triple Porthole - price per berth	€11,900	£10,710	US\$13,090
Twin Porthole - price per berth	€11,900	£10,710	US\$13,090
Twin Porthole - single occupancy	€20,230	£18,207	US\$22,253
Twin Window - price per berth	€12,350	£11,115	US\$13,585
Twin Window - single occupancy	€20,995	£18,896	US\$23,095
Twin Deluxe - price per berth	€12,900	£11,610	US\$14,190
Twin Deluxe - single occupancy	€21,930	£19,737	US\$24,123
Superior - price per person (only double bed)	€13,600	£12,240	US\$14,960
Superior - single occupancy	€23,120	£20,808	US\$25,432

NOTE: If you book a berth as a single person in a shared cabin the other occupants of the cabin will be of the same gender.

**** GBP and USD prices** are for guidance only and final price will be based on the exchange rate at time of booking.

IMPORTANT NOTE: All itineraries are for guidance only. Programs may vary depending on ice, weather, and wildlife conditions. Landings are subject to site availabilities, permissions, and environmental concerns per IAATO regulations. Official sailing plans and landing slots are scheduled with IAATO prior to the start of the season, but the expedition leader determines the final plan. Flexibility is paramount for expedition cruises. The average cruising speed for our vessel is 10.5 knots.



INCLUSIONS & EXCLUSIONS FOR THIS ITINERARY

■ ANTARCTIC CRUISE:

✓ 10 night / 11 Day Antarctic Cruise on the M/V Ortelius - Cabin TBC.

Cruise Includes:

- ✓ Voyage aboard the indicated vessel as indicated in the itinerary.
- ✓ All meals throughout the voyage aboard the ship including snacks, coffee and tea.
- ✓ All shore excursions and activities throughout the voyage by Zodiac.
- ✓ Program of lectures by noted naturalists and leadership by experienced expedition staff.
- ✓ Free use of rubber boots and snowshoes.
- ✓ Luggage transfer from pick-up point to the vessel on the day of embarkation, in Ushuaia.
- ✓ Pre-scheduled group transfer from the vessel to the airport in Ushuaia (directly after disembarkation).
- ✓ All miscellaneous service taxes and port charges throughout the programme.
- ✓ Comprehensive pre-departure material.
- ✓ During our “Basecamp” departures, all offered activities (including camping, kayaking, snowshoe/hiking, mountaineering, photo workshop) as well as our standard included shore excursions and zodiac cruises) are free of charge.

Cruise Excludes:

- ✓ Any airfare, whether on scheduled or charter flights
- ✓ Pre- and post- land arrangements.
- ✓ Passport and visa expenses.
- ✓ Government arrival and departure taxes.
- ✓ Meals ashore.
- ✓ Baggage, cancellation and personal insurance (which is strongly recommended).
- ✓ Excess baggage charges and all items of a personal nature such as laundry, bar, beverage charges and telecommunication charges.
- ✓ The customary gratuity at the end of the voyages for stewards and other service personnel aboard (guidelines will be provided).

Important Note: All itineraries are for guidance only. Programs may vary depending on ice, weather, and wildlife conditions. Landings are subject to site availabilities, permissions, and environmental concerns per IAATO regulations. Official sailing plans and landing slots are scheduled with IAATO prior to the start of the season, but the expedition leader determines the final plan. Flexibility is paramount for expedition cruises. The average cruising speed for our vessel is 10.5 knots.

