

M/V ORTELIUS

ANTARCTICA BASE CAMP

12 NIGHTS | TRIP CODE: OTL26-24

24th DEC 2023 - 5th JAN 2024

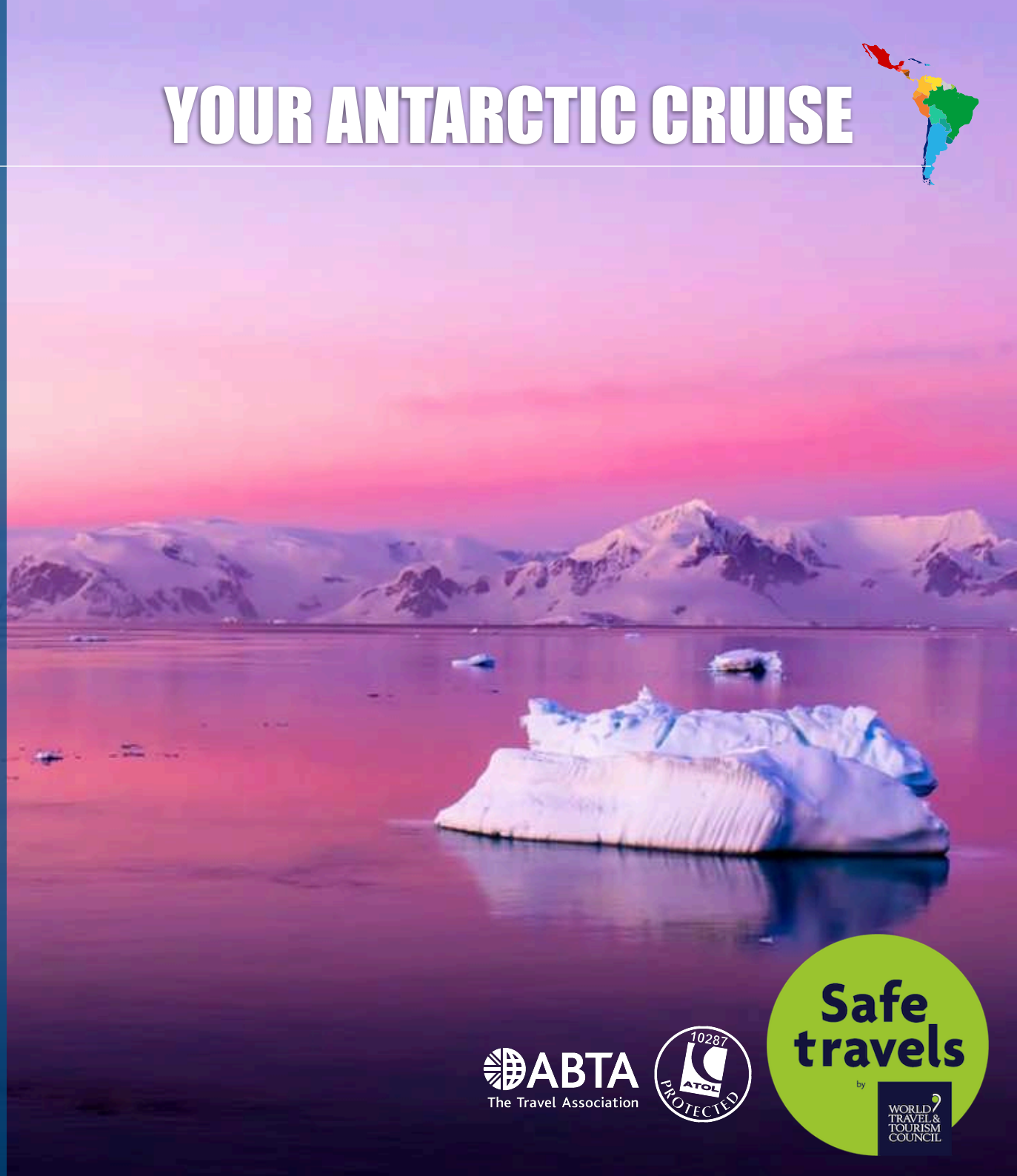
USHUAIA - USHUAIA

The Antarctic Peninsula Basecamp cruise offers you a myriad of ways to explore and enjoy the Antarctic Region. This expedition allows you to hike, snowshoe, kayak, go mountaineering, and even camp out under the Southern Polar skies.

PLEASE NOTE:

All itineraries are for guidance only. Programs may vary depending on ice, weather, and wildlife conditions. Landings are subject to site availabilities, permissions, and environmental concerns per IAATO regulations. Official sailing plans and landing slots are scheduled with IAATO prior to the start of the season, but the expedition leader determines the final plan. Flexibility is paramount for expedition cruises. The average cruising speed for our vessel is 10.5 knots.

YOUR ANTARCTIC CRUISE



M/V ORTELIUS - ABOUT THE SHIP

The ice-strengthened vessel "Ortelius" is an excellent vessel for Polar expedition cruises in the Arctic and Antarctica, providing us with possibilities to adventure in remote locations such as the Ross Sea and Franz Josef Land.

"Ortelius" was built in Gdynia, Poland in 1989, was named "Marina Svetaeva", and served as a special purpose vessel for the Russian Academy of Science. The vessel is re-flagged and renamed "Ortelius". As Plancius, Ortelius was a Dutch / Flemish cartographer. Abraham Ortelius (1527 – 1598) published the first modern world atlas, the Theatrum Orbis Terrarum or Theatre of the World in 1570. At that time, the atlas was the most expensive book ever printed.

The vessel has the highest ice-class notation (UL1 equivalent to 1A) and is therefore very suitable to navigate in solid one-year sea ice and loose multi year pack ice. "Ortelius" is a great expedition vessel for 108 passengers with lots of open-deck spaces.

The vessel is manned by 20 highly experienced international nautical crew, 19 international hotel crew, including stewardesses, 7 expedition staff in Antarctica (1 expedition leader and 6 guides/lecturers), for the Arctic we will have 8 expedition staff (1 expedition leader and 7 guides/lecturers) and 1 doctor.

The vessel offers simple but comfortable cabins and public spaces • 4 quadruple cabins with bunk beds (these can also be used as triple or twin cabins) • 26 twin porthole cabin with 2 single lower berths • 12 twin cabins with windows and 2 single lower berths • 2 twin deluxe cabins with windows and 2 single lower berths • 6 superior cabins with double beds. All cabins are spacious outside cabins with a minimum of two portholes or windows per cabin and all cabins have private shower and toilet.

"Ortelius" offers a comfortable hotel standard, with two restaurants, a bar/lecture room. Our voyages are primarily developed to offer our passengers a quality exploratory wildlife program, trying to spend as much time ashore as possible. As the number of passengers is limited to approximately 108 on the "Ortelius", flexibility assures maximum wildlife opportunities.

SPECIFICATIONS

Registered: The Netherlands

Length: 90.95 meters

Breadth: 17.20 meters

Draft: 5.4 meters

Ice class: UL1 (equivalent to 1A)

Displacement: 4,090 tons

Propulsion: 6 ZL 40/48 SULZER

Average cruising speed: 10,5 knots

Passengers: 108 in 50 cabins

Crew, guides, doctor: 41 / 8 / 1

Various decks refurbished 2012-2017-2019

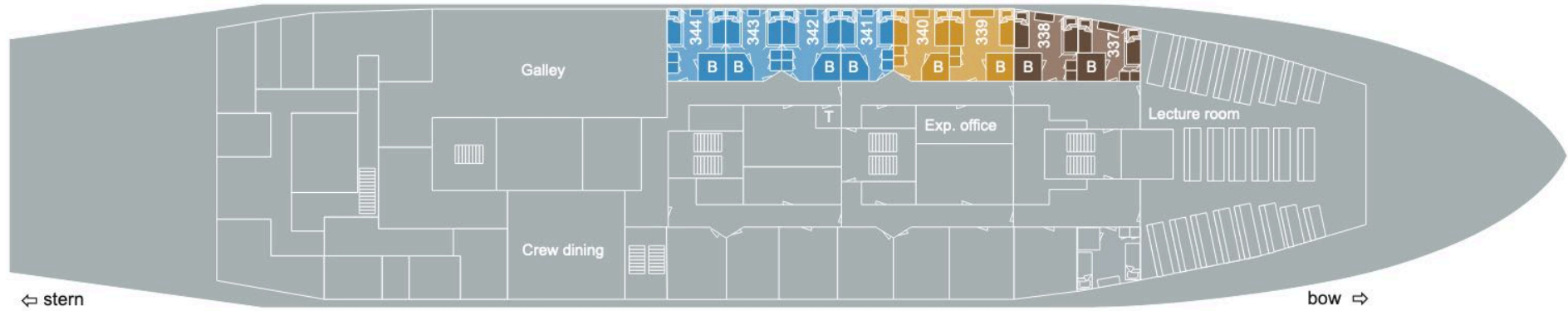


M/V ORTELIUS



M/V ORTELIUS - DECK PLANS

DECK 3

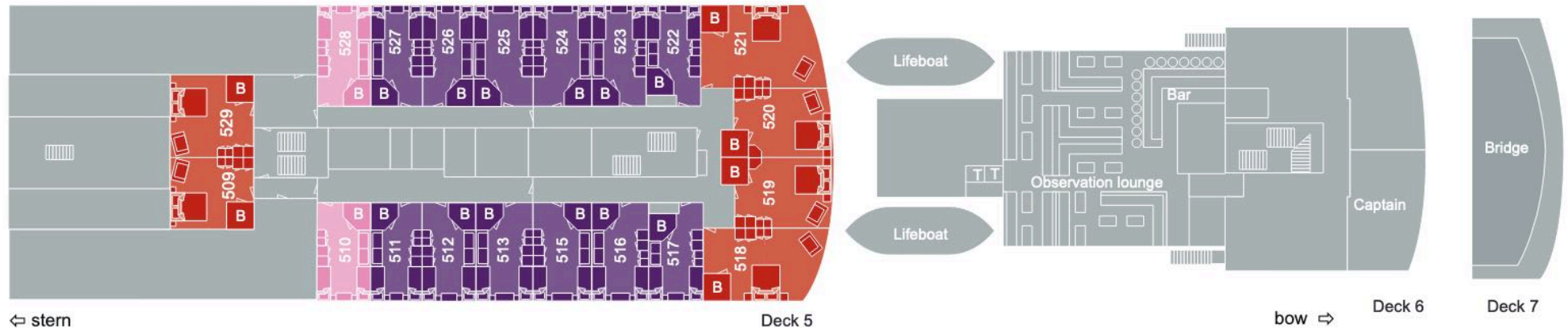


DECK 4






M/V ORTELIUS - DECK PLANS

DECK 5, 6 & 7

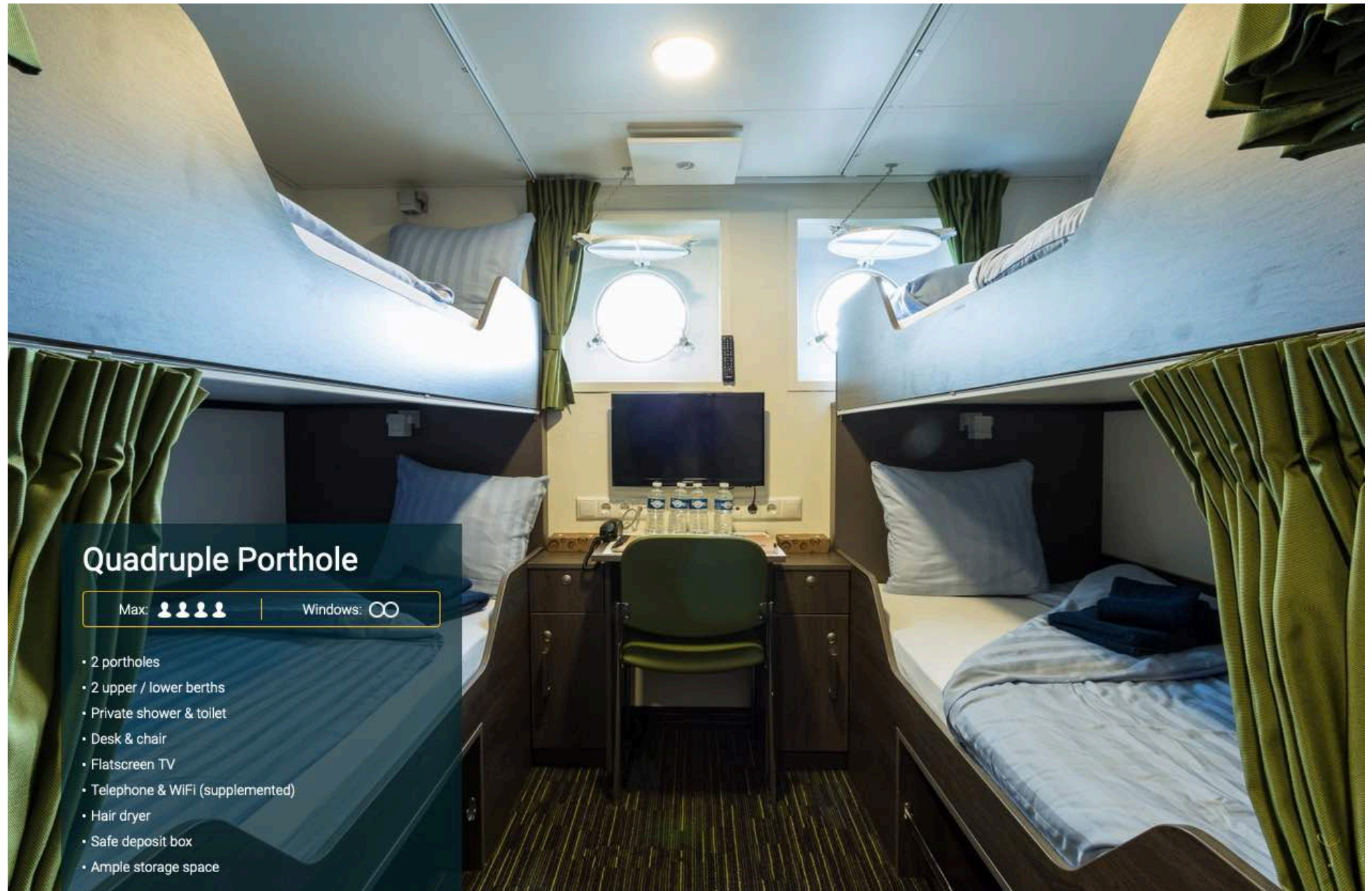


KEY

| m/v Ortelius deckplan | | |
|--|---|--|
| ■ Superior |  Lower berth | |
| ■ Twin Deluxe |  Upper and lower berth | T Toilet |
| ■ Twin Window |  Double bed | B Bathroom |
| ■ Twin Porthole | | |
| ■ Twin Porthole plus additional third bed | | |
| ■ Quadruple Porthole | | |



M/V ORTELIUS - CABINS



Quadruple Porthole

Max: 

Windows: 

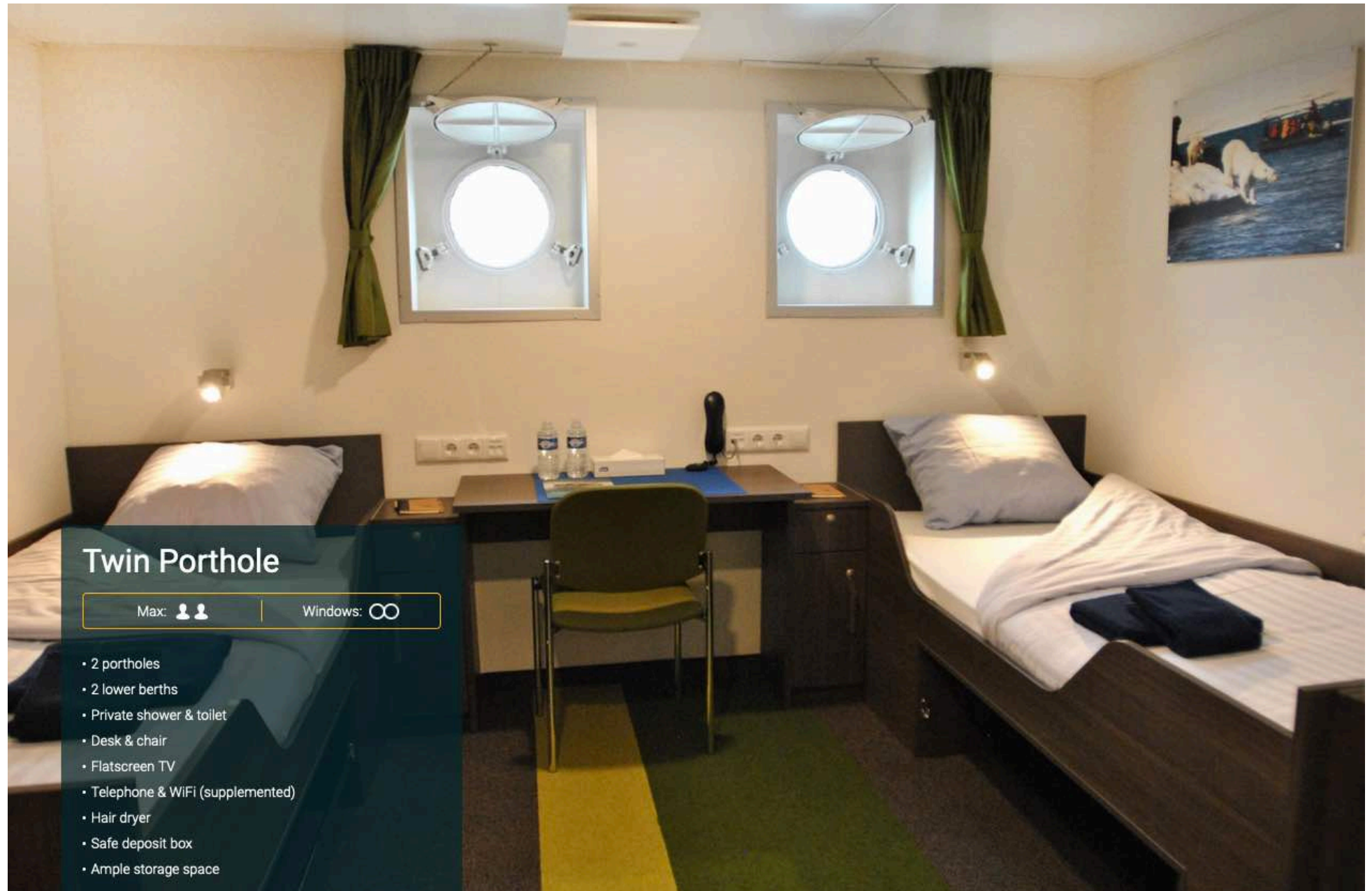
- 2 portholes
- 2 upper / lower berths
- Private shower & toilet
- Desk & chair
- Flatscreen TV
- Telephone & WiFi (supplemented)
- Hair dryer
- Safe deposit box
- Ample storage space



THELATINAMERICATRAVELCOMPANY.COM | Email: info@thelatinamericatraveltravelcompany.com
UK ☎: +44 (0) 20 8191 7772 | Part of HeadsEast Ltd - UK business registration: 6717612



M/V ORTELIUS - CABINS



Twin Porthole

Max: 

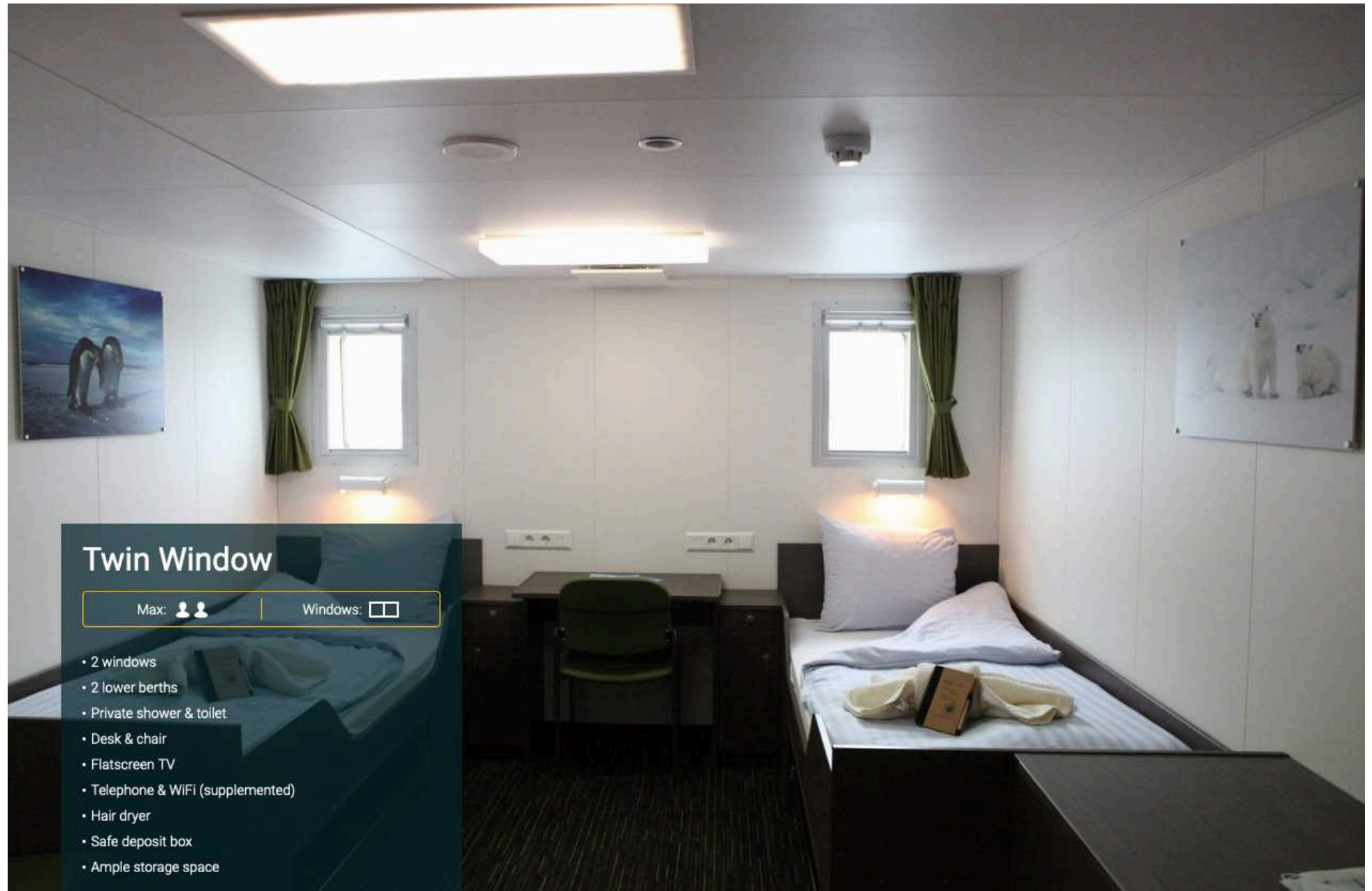
Windows: 

- 2 portholes
- 2 lower berths
- Private shower & toilet
- Desk & chair
- Flatscreen TV
- Telephone & WiFi (supplemented)
- Hair dryer
- Safe deposit box
- Ample storage space



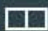
THELATINAMERICATRAVELCOMPANY.COM | Email: info@thelatinamericatraveltravelcompany.com
UK ☎: +44 (0) 20 8191 7772 | Part of HeadsEast Ltd - UK business registration: 6717612





Twin Window

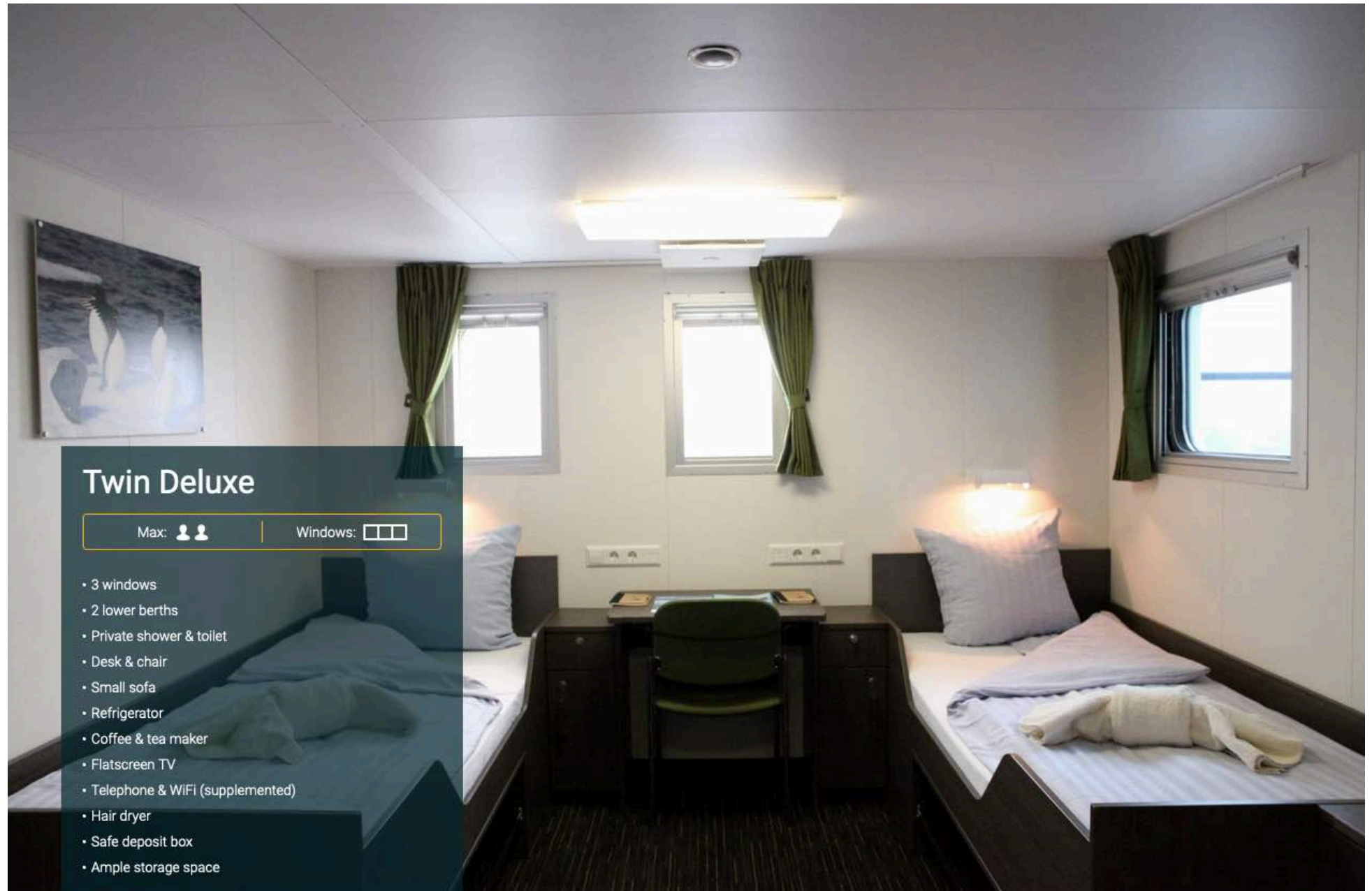
Max: 

Windows: 

- 2 windows
- 2 lower berths
- Private shower & toilet
- Desk & chair
- Flatscreen TV
- Telephone & WiFi (supplemented)
- Hair dryer
- Safe deposit box
- Ample storage space




M/V ORTELIUS - CABINS



Twin Deluxe

Max: 

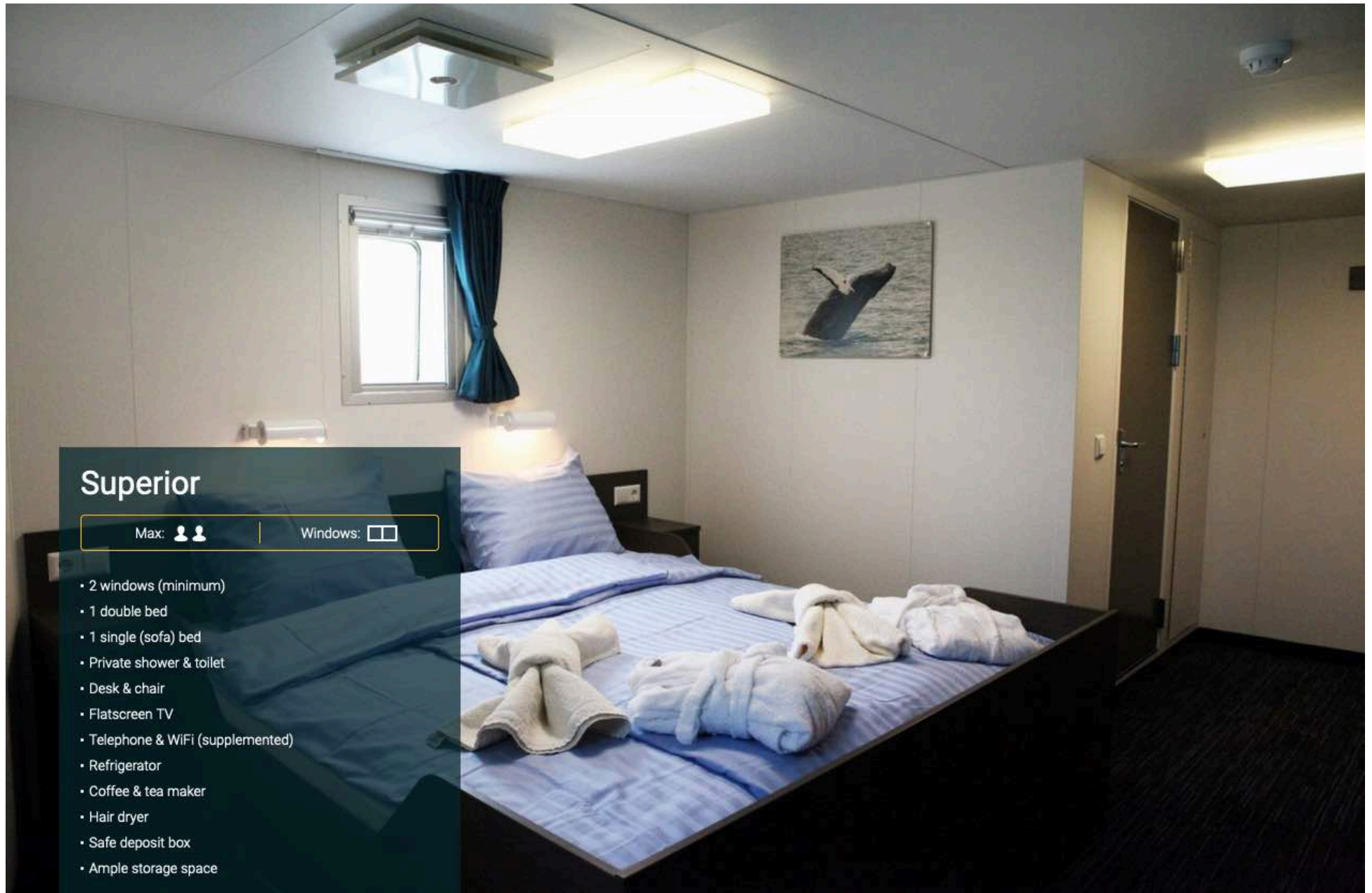
Windows: 

- 3 windows
- 2 lower berths
- Private shower & toilet
- Desk & chair
- Small sofa
- Refrigerator
- Coffee & tea maker
- Flatscreen TV
- Telephone & WiFi (supplemented)
- Hair dryer
- Safe deposit box
- Ample storage space




THELATINAMERICATRAVELCOMPANY.COM | Email: info@thelatinamericatraveltravelcompany.com
UK ☎: +44 (0) 20 8191 7772 | Part of HeadsEast Ltd - UK business registration: 6717612





Superior

Max: 

Windows: 

- 2 windows (minimum)
- 1 double bed
- 1 single (sofa) bed
- Private shower & toilet
- Desk & chair
- Flatscreen TV
- Telephone & WiFi (supplemented)
- Refrigerator
- Coffee & tea maker
- Hair dryer
- Safe deposit box
- Ample storage space



Ortelius: a Vessel with Comfort and Character

Please be aware that a small number of cabins may have a partially obstructed view due to the size of the windows and the design requirements of the ship. For example, some windows may be partly obstructed in the lower half by a gangway. The best view is always on the outer deck or the bridge. Though our voyages are primarily meant to offer our passengers an exploratory wildlife program with as much time ashore as possible, Ortelius offers all the comforts of a standard hotel — along with a bar and lecture room. Flexibility assures maximum wildlife opportunities. As such, Ortelius carries 10 Zodiacs with 60hp Yamaha engines.

Age & Nationality

Passengers on a typical voyage range from in their 30s to their 80s, with the majority usually between 45 — 65. Our expeditions attract independent travellers from around the globe who are characterised by a strong interest in exploring remote regions. The camaraderie that develops on board is an important part of the Oceanwide experience, and many passenger groups include several nationalities.

What to Wear

In keeping with the spirit of expedition, dress on board is informal. Bring casual and comfortable clothing for all activities, and keep in mind that much of the scenery can be appreciated from deck — which can be slippery. Bring sturdy shoes with no-slip soles, and make sure your parka is never far away in case one of our crew shouts “Whales!” over the loudspeaker and you have to dash outside in a moment’s notice. Opt for layers, as it is comfortably warm aboard the ship though often cold on deck.

Non-Smoking Policy

We have a non-smoking policy inside all our vessels, though you can smoke in certain designated areas.

How to Pay

Refreshments and souvenirs will be charged to your cabin. The day before departure you can settle your bill with the hotel manager, paying by credit card (Visa or MasterCard) or cash (euro, or in some cases dollar). Though the prices and standard currency on board is in the euro, other currencies may be accepted at the discretion of the hotel manager, at prevailing rates.

Electric Current

The electrical supply aboard ship is 220v, 60Hz. Electrical outlets are standard European with two thick round pins, so some passengers may need a 220v/110v converter.

Gratuities

The customary gratuity to the ship’s service personnel is made as a blanket contribution at the end of the voyage and is divided among the crew. Tipping is a personal matter, and the amount you wish to give is at your sole discretion. As a generally accepted guideline, we suggest 8 — 10 euros per passenger per day.

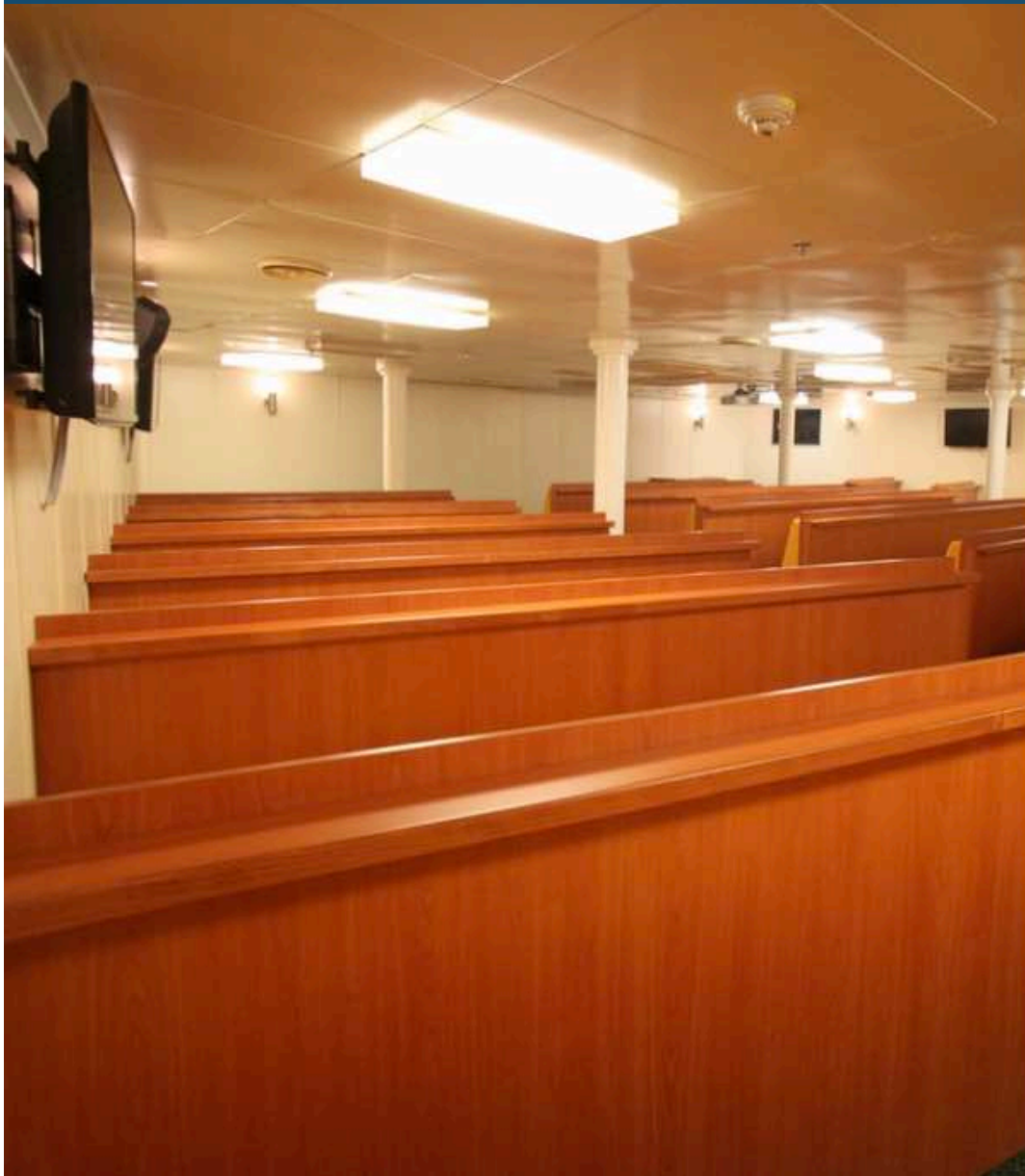
Your Physical Condition

You must be in good overall health and be able to walk several hours per day. The expedition is ship-based and physically not very demanding, but we spend as much time as possible on shore. You are, however, welcome to remain aboard the ship if you prefer. To join most excursions you must be able to get up and down the steep gangway — from the ship to the water level — to board the Zodiacs. Staff will assist you in and out of the boats, and boarding will become progressively easier with practice, but conditions on shore can be slippery and rocky. Remember, you will be traveling in remote areas without access to sophisticated medical facilities, so you must not join this expedition if you have a life-threatening condition or need daily medical treatment.

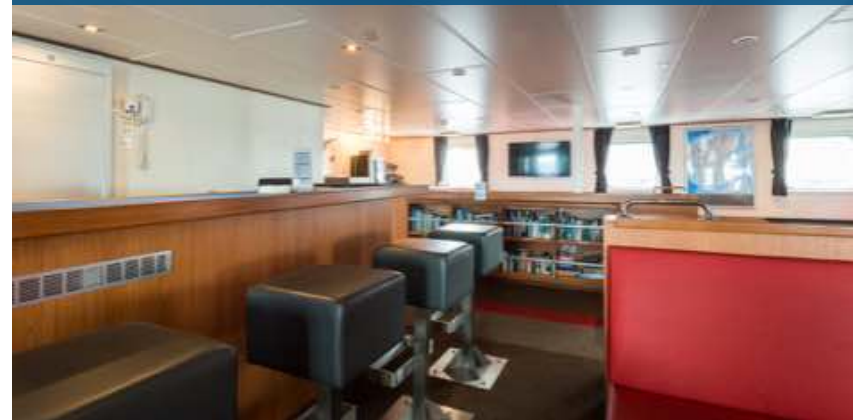


M/V ORTELIUS - FACILITIES

LECTURE THEATRE



BAR LOUNGE



DINING





YOUR DETAILED DAY BY DAY ITINERARY

DAY 1

24th DECEMBER 2023

JOIN SHIP

END OF THE WORLD, START OF THE JOURNEY SOUTH

Your voyage begins where the world drops off. Ushuaia, Argentina, reputed to be the southernmost city on the planet, is located on the far southern tip of South America. Starting in the afternoon, you embark from this small resort town on Tierra del Fuego, nicknamed “The End of the World,” and sail the mountain-fringed Beagle Channel for the remainder of the evening.

IMPORTANT NOTE: All itineraries are for guidance only. Programs may vary depending on ice, weather, and wildlife conditions. Landings are subject to site availabilities, permissions, and environmental concerns per IAATO regulations. Official sailing plans and landing slots are scheduled with IAATO prior to the start of the season, but the expedition leader determines the final plan. Flexibility is paramount for expedition cruises. The average cruising speed for our vessel is 10.5 knots.

 **Meals Included:** Dinner.

OVERNIGHT

M/V ORTELIUS



A classic old expedition vessel for the romantics adventurers who don't mind more basic, but still clean and comfortable, facilities.

[CLICK HERE TO LEARN MORE](#)



Photos for guidance only & not necessarily the room booked



YOUR DETAILED DAY BY DAY ITINERARY

DAY 2

25th DECEMBER 2023

AT SEA

PATH OF THE POLAR EXPLORERS - CROSSING THE DRAKE PASSAGE

Over the next two days on the Drake Passage, you enjoy some of the same experiences encountered by the great polar explorers who first charted these regions: cool salt breezes, rolling seas, maybe even a fin whale spouting up sea spray. After passing the Antarctic Convergence – Antarctica’s natural boundary, formed when north-flowing cold waters collide with warmer sub-Antarctic seas – you are in the circum-Antarctic upwelling zone.

Not only does the marine life change, the avian life changes too. Wandering albatrosses, grey-headed albatrosses, black-browed albatrosses, light-mantled sooty albatrosses, cape pigeons, southern fulmars, Wilson’s storm petrels, blue petrels, and Antarctic petrels are a few of the birds you might see.

 **Meals Included:** Breakfast, Lunch & Dinner.

OVERNIGHT

M/V ORTELIUS



A classic old expedition vessel for the romantics adventurers who don't mind more basic, but still clean and comfortable, facilities.

[CLICK HERE TO LEARN MORE](#)



Photos for guidance only & not necessarily the room booked





YOUR DETAILED DAY BY DAY ITINERARY

DAY 3

26th DECEMBER 2023

 **AT SEA**

CONTINUE ACROSS THE DRAKE PASSAGE

THE DRAKE PASSAGE Sailing south from the entrance of the Strait of Magellan, Spanish navigator Francisco de Hoces discovered this passage in 1525, making him the first European to pass through it. For this reason, it appears as Mar de Hoces in most Spanish and Spanish American maps and sources.

The passage received its English name from the 16th-century privateer Francis Drake during his circumnavigation. After passing through the Strait of Magellan with Marigold, Elizabeth, and his flagship Golden Hind, Drake entered the Pacific Ocean and was blown far south in a tempest. Marigold was lost, and Elizabeth abandoned the fleet. Only Drake's Golden Hind entered the passage. This incident demonstrated to the English that there was open water south of South America.

The first recorded voyage through the passage was that of Eendracht, captained by the Dutch navigator Jacob Le Maire in 1616, naming Cape Horn in the process.

 **Meals Included:** Breakfast, Lunch & Dinner.

OVERNIGHT

M/V ORTELIUS



A classic old expedition vessel for the romantics adventurers who don't mind more basic, but still clean and comfortable, facilities.

[CLICK HERE TO LEARN MORE](#)



Photos for guidance only & not necessarily the room booked



THELATINAMERICATRAVELCOMPANY.COM | Email: info@thelatinamericatraveltravelcompany.com
UK ☎: +44 (0) 20 8191 7772 | Part of HeadsEast Ltd - UK business registration: 6717612



YOUR DETAILED DAY BY DAY ITINERARY

DAY 4

27th DECEMBER 2023

ANTARCTICA

A WELCOME ARRIVAL TO THE ANTARCTIC PENINSULA

Gray stone peaks sketched with snow, towers of broken blue-white ice, and dramatically different wildlife below and above. You first pass the snow-capped Melchior Islands and Schollaert Channel, sailing between Brabant and Anvers Islands. Over the next days, subject to weather conditions you may see the following:

Neumayer Channel: The vessel may position itself here, launching its multiple basecamp activities from the protected waters around Wiencke Island. You can enjoy the splendors of this alpine environment at sea with Zodiac and kayaking trips, or if you're in the mood for a walk, there are possible snowshoe hikes and soft-climb mountaineering options farther inland. Naturally, favorable weather conditions determine the possible activities.

Port Lockroy: After sailing through the Neumayer Channel, you may get a chance to visit the former British research station – now a museum and post office – of Port Lockroy on Goudier Island. You may also be able to partake in activities around Jougla Point, meeting gentoo penguins and blue-eyed shags. At the nearby sites, such as Damoy Point there may be the opportunity for snowshoeing to the old ski-way, this is also one of our favourite camping sites.

 **Meals Included:** Breakfast, Lunch & Dinner.

OVERNIGHT

M/V ORTELIUS



A classic old expedition vessel for the romantics adventurers who don't mind more basic, but still clean and comfortable, facilities.

[CLICK HERE TO LEARN MORE](#)



Photos for guidance only & not necessarily the room booked





DAY 5

28th DECEMBER 2023

ANTARCTICA

CONTINUE TO EXPLORE THE ANTARCTIC PENINSULAR

Gray stone peaks sketched with snow, towers of broken blue-white ice, and dramatically different wildlife below and above. You first pass the snow-capped Melchior Islands and Schollaert Channel, sailing between Brabant and Anvers Islands. Over the next days, subject to weather conditions you may see the following:

Pléneau & Petermann Islands: If the ice allows it, you can sail through the Lemaire Channel in search of Adélie penguins and blue-eyed shags. There's also a good chance you'll encounter humpback and minke whales here, as well as leopard seals. Kayaking, glacier walks, and more ambitious mountaineering trips are the potential activities of this location.

Neko Harbour: An epic landscape of mammoth glaciers and endless wind-carved snow, Neko Harbour offers opportunities for a Zodiac cruise and landing that afford the closest views of the surrounding alpine peaks.

Paradise Bay: You have the chance to make camp here like a true polar explorer, enjoying a supreme overnight Antarctic adventure.

Errera Channel: Possible sites in this area include Danco Island and Cuverville Island, but also the lesser known (though equally picturesque) Orne Island and Georges Point on Rongé Island.

 **Meals Included:** Breakfast, Lunch & Dinner.

OVERNIGHT

M/V ORTELIUS



A classic old expedition vessel for the romantics adventurers who don't mind more basic, but still clean and comfortable, facilities.

[CLICK HERE TO LEARN MORE](#)



Photos for guidance only & not necessarily the room booked



YOUR DETAILED DAY BY DAY ITINERARY

DAY 6

29th DECEMBER 2023

ANTARCTICA

CONTINUE TO EXPLORE THE ANTARCTIC PENINSULAR

 **Meals Included:** Breakfast, Lunch & Dinner.



Camping: Special gear and field equipment will be provided. Camping is subject to weather, local site and environmental regulations.



Hiking: There will be easy, moderate and more demanding walks available in the vicinity of the landing sites. Rubber boots with a grip sole appropriate for hiking will be provided on our motor vessels but not on our smaller sailing vessel for which you should bring your own sturdy ankle-high hiking boots and gaiters.

OVERNIGHT

M/V ORTELIUS



A classic old expedition vessel for the romantics adventurers who don't mind more basic, but still clean and comfortable, facilities.

[CLICK HERE TO LEARN MORE](#)



Photos for guidance only & not necessarily the room booked



THELATINAMERICATRAVELCOMPANY.COM | Email: info@thelatinamericatraveltravelcompany.com
UK ☎: +44 (0) 20 8191 7772 | Part of HeadsEast Ltd - UK business registration: 6717612



DAY 7

30th DECEMBER 2023

ANTARCTICA

CONTINUE TO EXPLORE THE ANTARCTIC PENINSULAR

 **Meals Included:** Breakfast, Lunch & Dinner.



Snowshoeing: Snowshoe walking is easy and does not require any technical skills. The snowshoes will fit all boot sizes and can be used in combination with Oceanwide's rubber boots.



Kayaking: Basic kayaking experience is of advantage, but it is not a requirement. Physical fitness is essential. Kayaking is subject to weather and prevailing ice conditions.

OVERNIGHT

M/V ORTELIUS



A classic old expedition vessel for the romantics adventurers who don't mind more basic, but still clean and comfortable, facilities.

[CLICK HERE TO LEARN MORE](#)



Photos for guidance only & not necessarily the room booked





YOUR DETAILED DAY BY DAY ITINERARY

DAY 8

31st DECEMBER 2023

ANTARCTICA

CONTINUE TO EXPLORE THE ANTARCTIC PENINSULAR

 **Meals Included:** Breakfast, Lunch & Dinner.



Port Lockroy is a former Antarctic base located on a scenic bay on Goudier Island, southwest of Wiencke Island, Antarctic Peninsula. French explorer Jean-Baptiste Charcot discovered the bay after which was named during his 1903 -1905 expedition, naming Port Lockroy after the politician who helped finance his expedition.



Neko Harbour - whaling ship Neko, is where this Antarctic bay got its name. Gentoo penguins breed on the hill above Neko Harbour, while Weddell & fur seals often haul out on the beach. But even if the Neko Harbour wildlife does not make an appearance, the scenery is nevertheless fantastic.

OVERNIGHT

M/V ORTELIUS



A classic old expedition vessel for the romantics adventurers who don't mind more basic, but still clean and comfortable, facilities.

[CLICK HERE TO LEARN MORE](#)



Photos for guidance only & not necessarily the room booked



THELATINAMERICATRAVELCOMPANY.COM | Email: info@thelatinamericatraveltravelcompany.com
UK ☎: +44 (0) 20 8191 7772 | Part of HeadsEast Ltd - UK business registration: 6717612



YOUR DETAILED DAY BY DAY ITINERARY

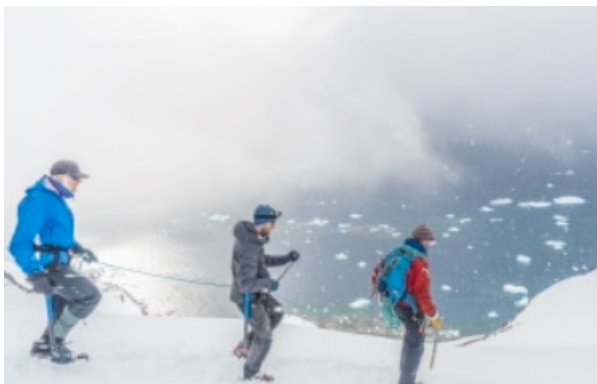
DAY 9

1st JANUARY 2024

ANTARCTICA

CONTINUE TO EXPLORE THE ANTARCTIC PENINSULAR

 **Meals Included:** Breakfast, Lunch & Dinner.



Mountaineering: Mountaineering knowledge is preferable, but not required. Physical fitness is essential. Mountaineering must be pre-booked prior to departure. Mountaineering is subject to weather and local site conditions.



Photo Workshop: Participants with a special interest in photography will bring their personal photo equipment. The workshop must be pre-booked prior to departure.

OVERNIGHT

M/V ORTELIUS



A classic old expedition vessel for the romantics adventurers who don't mind more basic, but still clean and comfortable, facilities.

[CLICK HERE TO LEARN MORE](#)



Photos for guidance only & not necessarily the room booked



THELATINAMERICATRAVELCOMPANY.COM | Email: info@thelatinamericatraveltravelcompany.com
UK ☎: +44 (0) 20 8191 7772 | Part of HeadsEast Ltd - UK business registration: 6717612



YOUR DETAILED DAY BY DAY ITINERARY

DAY 10

2nd JANUARY 2024

SOUTH SHETLAND

TRY TO VISIT THE MELCHIOR & SOUTH SHETLAND ISLANDS

On your last day of near-shore activities, you pass the Melchior Islands toward the open sea. Keep a sharp lookout for humpback whales in Dallmann Bay. You might also shoot for Half Moon Island, in the South Shetlands, with further chances for activities. Conditions on the Drake Passage determine the exact time of departure.

 **Meals Included:** Breakfast, Lunch & Dinner.

OVERNIGHT

M/V ORTELIUS



A classic old expedition vessel for the romantics adventurers who don't mind more basic, but still clean and comfortable, facilities.

[CLICK HERE TO LEARN MORE](#)



Photos for guidance only & not necessarily the room booked



ANTARCTICA SCENERY



THELATINAMERICATRAVELCOMPANY.COM | Email: info@thelatinamericatraveltravelcompany.com
UK ☎: +44 (0) 20 8191 7772 | Part of HeadsEast Ltd - UK business registration: 6717612



YOUR DETAILED DAY BY DAY ITINERARY

DAY 11

3rd JANUARY 2024

AT SEA

HEAD BACK ACROSS THE DRAKE PASSAGE TO USHUAIA

Your return voyage across the Drake Passage is far from lonely. While crossing the Drake, you're again greeted by the vast array of seabirds remembered from the passage south. But they seem a little more familiar to you now, and you to them.

 **Meals Included:** Breakfast, Lunch & Dinner.



OVERNIGHT

M/V ORTELIUS



A classic old expedition vessel for the romantics adventurers who don't mind more basic, but still clean and comfortable, facilities.

[CLICK HERE TO LEARN MORE](#)



Photos for guidance only & not necessarily the room booked



THELATINAMERICATRAVELCOMPANY.COM | Email: info@thelatinamericatraveltravelcompany.com
UK ☎: +44 (0) 20 8191 7772 | Part of HeadsEast Ltd - UK business registration: 6717612



YOUR DETAILED DAY BY DAY ITINERARY

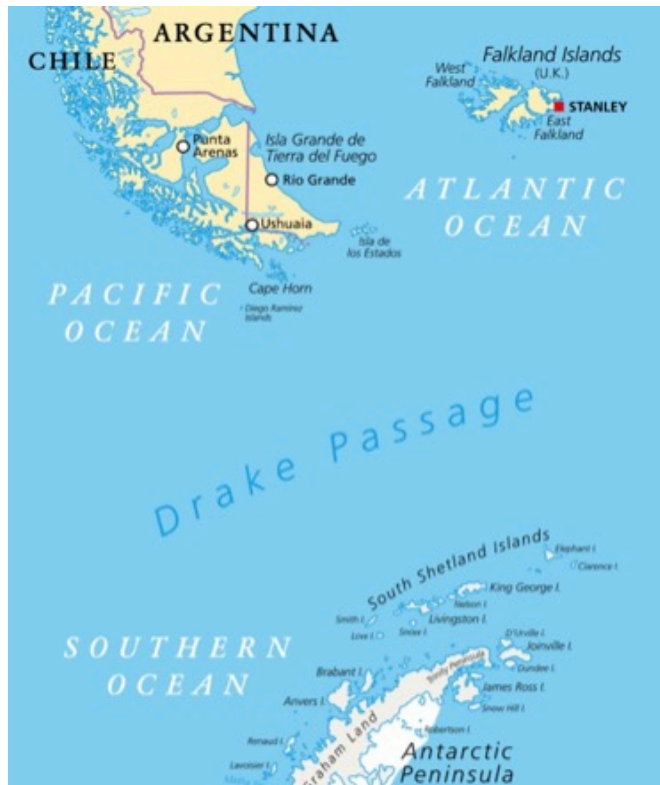
DAY 12

4th JANUARY 2024

 **AT SEA**

LAST DAY ON THE DRAKE BEFORE ARRIVAL IN ARGENTINA TOMORROW

 **Meals Included:** Breakfast, Lunch & Dinner.



OVERNIGHT

M/V ORTELIUS



A classic old expedition vessel for the romantics adventurers who don't mind more basic, but still clean and comfortable, facilities.

[CLICK HERE TO LEARN MORE](#)



Photos for guidance only & not necessarily the room booked



THELATINAMERICATRAVELCOMPANY.COM | Email: info@thelatinamericatraveltravelcompany.com
UK ☎: +44 (0) 20 8191 7772 | Part of HeadsEast Ltd - UK business registration: 6717612



DAY 13

5th JANUARY 2024

USHUAIA

ARRIVAL BACK IN ARGENTINA

Every adventure, no matter how grand, must eventually come to an end. It's now time to disembark in Ushuaia, but with memories that will accompany you wherever your next adventure lies.

On arrival a transfer to your hotel with the rest of the day free to get used to dry land again!

 **Meals Included:** Breakfast.



LATC Founder Chris

"Antarctica is without doubt the most amazing trip I have made anywhere in the world and totally unique from every aspect and I will be going back to see more of the frozen continent on a regular basis. It is both a privilege and a responsibility to be able to send our clients."



antarctica
flora & fauna
INFOGRAPHIC

ANIMALS:

hourglass dolphin, weddell seal, crabeater seal, leopard seal, ross seal

SEA LIFE:

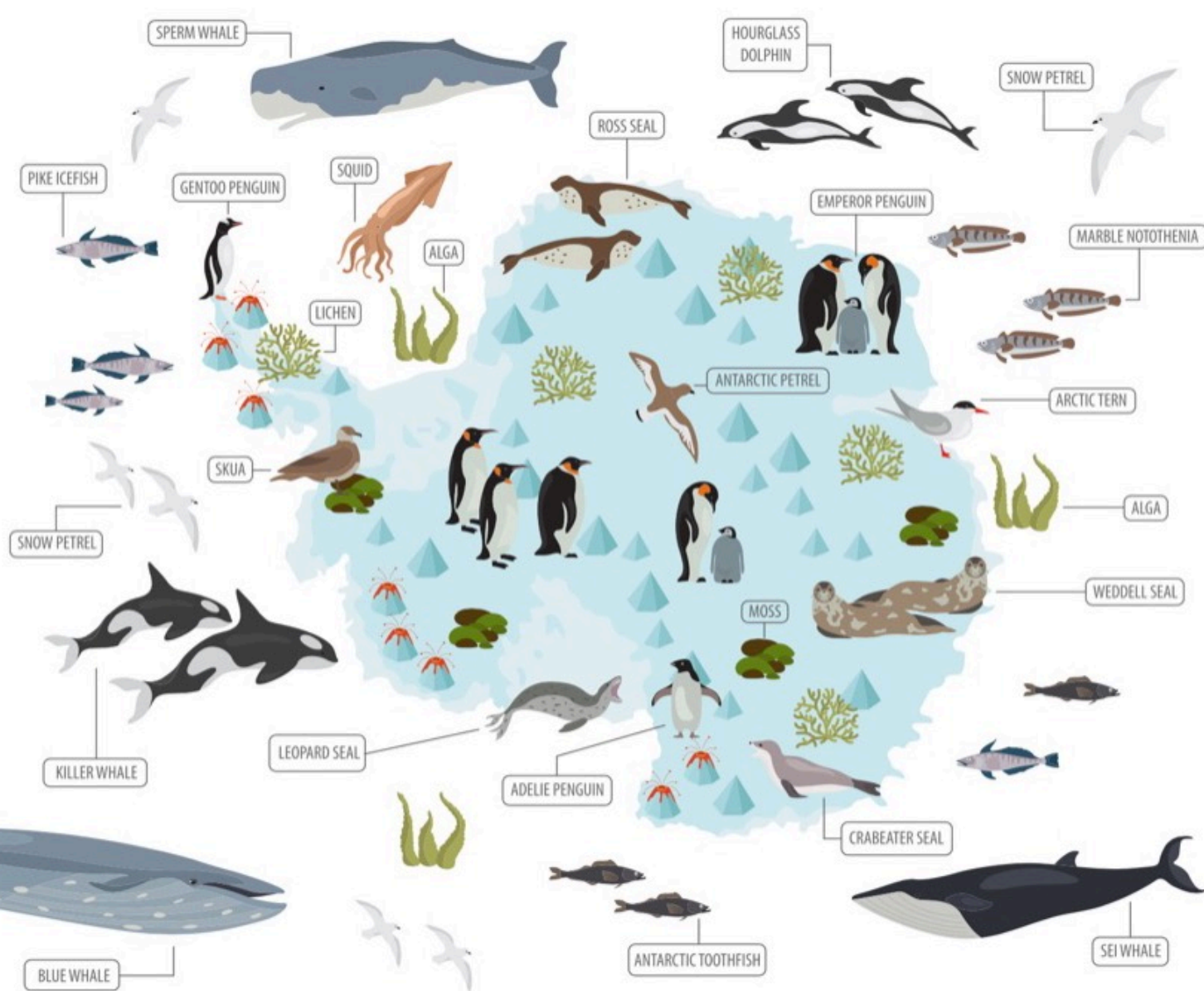
sperm whale, blue whale, killer whale, squid, sei whale, marble notothenia, antarctic toothfish, pike icefish

BIRDS:

emperor penguin, adelic penguin, gentoo penguin, antarctic petrel, snow petrel, skua, arctic tern

PLANTS:

lichen, moss, alga



TRIP CODE: OTL26-24: ANTARCTIC BASE CAMP - START & FINISH DATES

Starts Ushuaia 24th December 2023 and Finishes Ushuaia 5th January 2024 - Guided in: English

| CABIN | EURO | GBP** | USD** |
|--|---------|---------|------------|
| 4 berth Quadruple Porthole - price per berth | €8,500 | £7,650 | US\$9,350 |
| 3 berth Triple Porthole - price per berth | €10,450 | £9,405 | US\$11,495 |
| Twin Porthole - price per berth | €10,450 | £9,405 | US\$11,495 |
| Twin Porthole - single occupancy | €17,765 | £15,989 | US\$19,542 |
| Twin Window - price per berth | €10,900 | £9,810 | US\$11,990 |
| Twin Window - single occupancy | €18,530 | £16,677 | US\$20,383 |
| Twin Deluxe - price per berth | €11,550 | £10,395 | US\$12,705 |
| Twin Deluxe - single occupancy | €19,635 | £17,672 | US\$21,599 |
| Superior - price per person (only double bed) | €12,300 | £11,070 | US\$13,530 |
| Superior - single occupancy | €20,910 | £18,819 | US\$23,001 |
| Kayaking, camping, hiking, mountaineering, snowshoeing | Free | Free | Free |

NOTE: If you book a berth as a single person in a shared cabin the other occupants of the cabin will be of the same gender.

**** GBP and USD prices** are for guidance only and final price will be based on the exchange rate at time of booking.

IMPORTANT NOTE: All itineraries are for guidance only. Programs may vary depending on ice, weather, and wildlife conditions. Landings are subject to site availabilities, permissions, and environmental concerns per IAATO regulations. Official sailing plans and landing slots are scheduled with IAATO prior to the start of the season, but the expedition leader determines the final plan. Flexibility is paramount for expedition cruises. The average cruising speed for our vessel is 10.5 knots.



INCLUSIONS & EXCLUSIONS FOR THIS ITINERARY

■ ANTARCTIC CRUISE:

✓ 12 night / 13 Day Antarctic Cruise on the M/V Ortelius - Cabin TBC.

Cruise Includes:

- ✓ Voyage aboard the indicated vessel as indicated in the itinerary.
- ✓ All meals throughout the voyage aboard the ship including snacks, coffee and tea.
- ✓ All shore excursions and activities throughout the voyage by Zodiac.
- ✓ Program of lectures by noted naturalists and leadership by experienced expedition staff.
- ✓ Free use of rubber boots and snowshoes.
- ✓ Luggage transfer from pick-up point to the vessel on the day of embarkation, in Ushuaia.
- ✓ Pre-scheduled group transfer from the vessel to the airport in Ushuaia (directly after disembarkation).
- ✓ All miscellaneous service taxes and port charges throughout the programme.
- ✓ Comprehensive pre-departure material.
- ✓ During our “Basecamp” departures, all offered activities (including camping, kayaking, snowshoe/hiking, mountaineering, photo workshop) as well as our standard included shore excursions and zodiac cruises) are free of charge.

Cruise Excludes:

- ✓ Any airfare, whether on scheduled or charter flights
- ✓ Pre- and post- land arrangements.
- ✓ Passport and visa expenses.
- ✓ Government arrival and departure taxes.
- ✓ Meals ashore.
- ✓ Baggage, cancellation and personal insurance (which is strongly recommended).
- ✓ Excess baggage charges and all items of a personal nature such as laundry, bar, beverage charges and telecommunication charges.
- ✓ The customary gratuity at the end of the voyages for stewards and other service personnel aboard (guidelines will be provided).

Important Note: All itineraries are for guidance only. Programs may vary depending on ice, weather, and wildlife conditions. Landings are subject to site availabilities, permissions, and environmental concerns per IAATO regulations. Official sailing plans and landing slots are scheduled with IAATO prior to the start of the season, but the expedition leader determines the final plan. Flexibility is paramount for expedition cruises. The average cruising speed for our vessel is 10.5 knots.

