

# M/V ORTELIUS

## FALKLANDS, SOUTH GEORGIA & ANTARCTICA

19 NIGHTS | TRIP CODE: OTL29-24

**2nd - 21st FEBRUARY 2024**

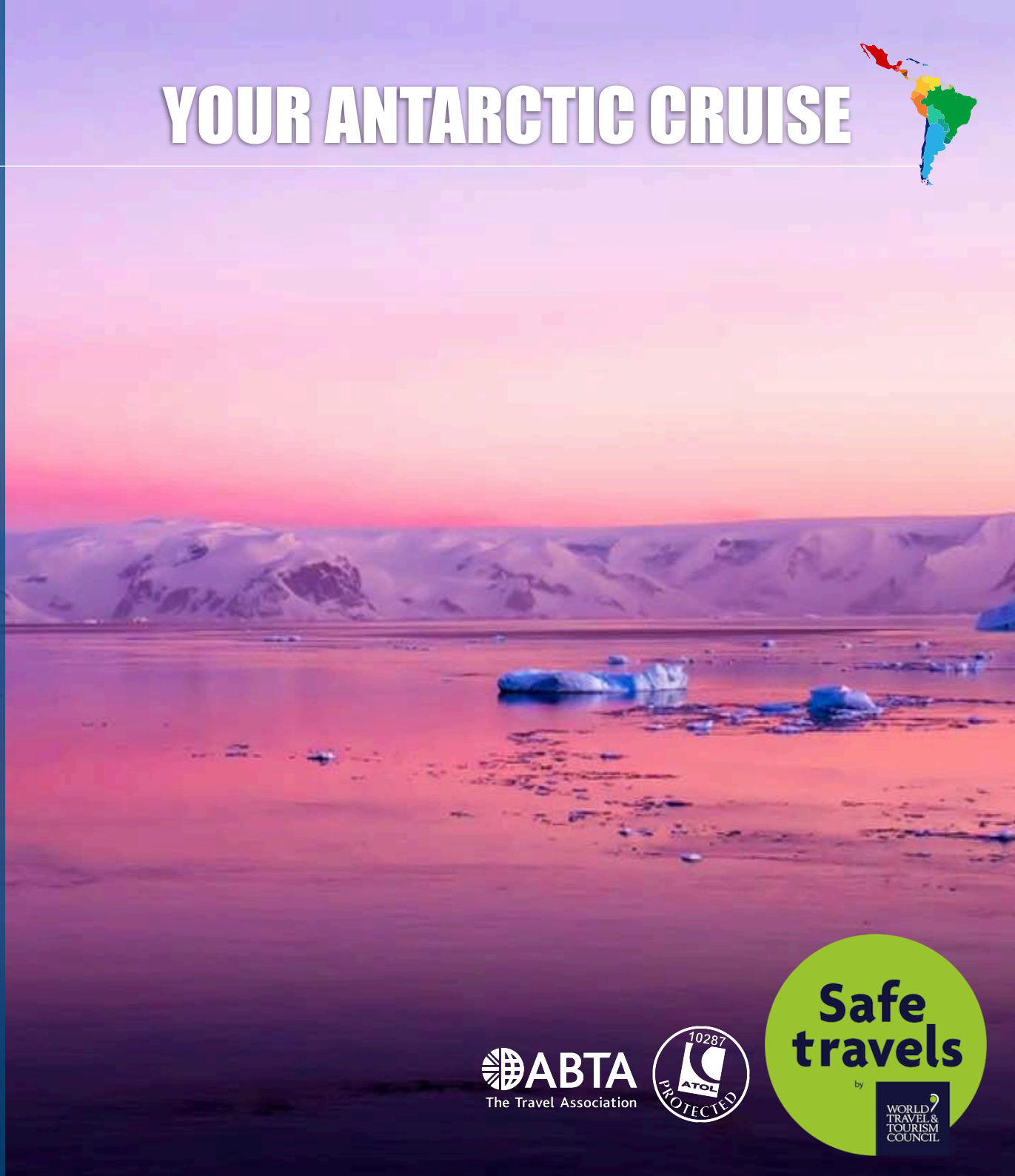
USHUAIA - USHUAIA

This Falkland Islands, South Georgia, and Antarctic Peninsula cruise is an animal-lover's dream come true. The expedition explores one of the last untamed areas on Earth – a land of ruggedly beautiful landscapes and amazingly varied wildlife.

### PLEASE NOTE:

All itineraries are for guidance only. Programs may vary depending on ice, weather, and wildlife conditions. Landings are subject to site availabilities, permissions, and environmental concerns per IAATO regulations. Official sailing plans and landing slots are scheduled with IAATO prior to the start of the season, but the expedition leader determines the final plan. Flexibility is paramount for expedition cruises. The average cruising speed for our vessel is 10.5 knots.

# YOUR ANTARCTIC CRUISE



## M/V ORTELIUS - ABOUT THE SHIP

The ice-strengthened vessel "Ortelius" is an excellent vessel for Polar expedition cruises in the Arctic and Antarctica, providing us with possibilities to adventure in remote locations such as the Ross Sea and Franz Josef Land.

"Ortelius" was built in Gdynia, Poland in 1989, was named "Marina Svetaeva", and served as a special purpose vessel for the Russian Academy of Science. The vessel is re-flagged and renamed "Ortelius". As Plancius, Ortelius was a Dutch / Flemish cartographer. Abraham Ortelius (1527 – 1598) published the first modern world atlas, the Theatrum Orbis Terrarum or Theatre of the World in 1570. At that time, the atlas was the most expensive book ever printed.

The vessel has the highest ice-class notation (UL1 equivalent to 1A) and is therefore very suitable to navigate in solid one-year sea ice and loose multi year pack ice. "Ortelius" is a great expedition vessel for 108 passengers with lots of open-deck spaces.

The vessel is manned by 20 highly experienced international nautical crew, 19 international hotel crew, including stewardesses, 7 expedition staff in Antarctica (1 expedition leader and 6 guides/lecturers), for the Arctic we will have 8 expedition staff (1 expedition leader and 7 guides/lecturers) and 1 doctor.

The vessel offers simple but comfortable cabins and public spaces • 4 quadruple cabins with bunk beds (these can also be used as triple or twin cabins) • 26 twin porthole cabin with 2 single lower berths • 12 twin cabins with windows and 2 single lower berths • 2 twin deluxe cabins with windows and 2 single lower berths • 6 superior cabins with double beds. All cabins are spacious outside cabins with a minimum of two portholes or windows per cabin and all cabins have private shower and toilet.

"Ortelius" offers a comfortable hotel standard, with two restaurants, a bar/lecture room. Our voyages are primarily developed to offer our passengers a quality exploratory wildlife program, trying to spend as much time ashore as possible. As the number of passengers is limited to approximately 108 on the "Ortelius", flexibility assures maximum wildlife opportunities.

## SPECIFICATIONS

**Registered:** The Netherlands

**Length:** 90.95 meters

**Breadth:** 17.20 meters

**Draft:** 5.4 meters

**Ice class:** UL1 (equivalent to 1A)

**Displacement:** 4,090 tons

**Propulsion:** 6 ZL 40/48 SULZER

**Average cruising speed:** 10,5 knots

**Passengers:** 108 in 50 cabins

**Crew, guides, doctor:** 41 / 8 / 1

**Various decks refurbished 2012-2017-2019**



# M/V ORTELIUS



# M/V ORTELIUS - DECK PLANS

## DECK 3

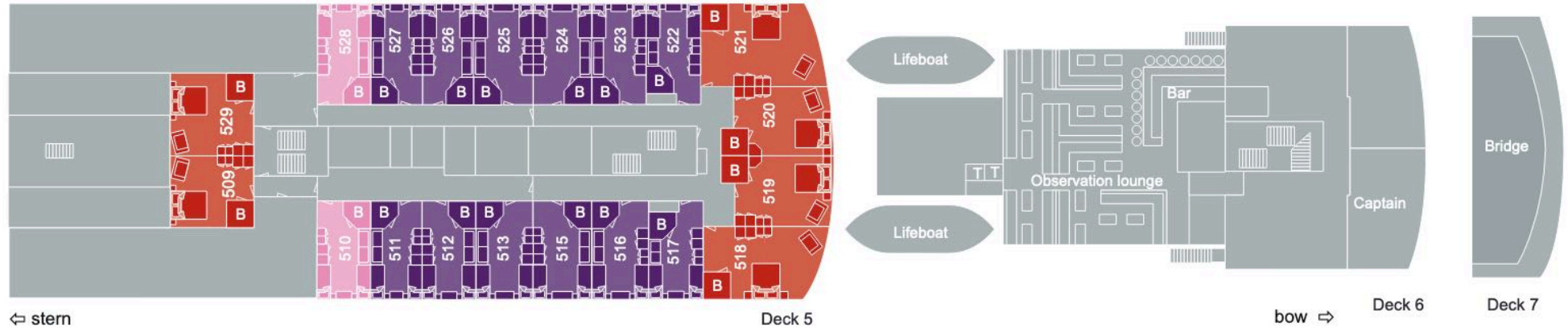


## DECK 4






# M/V ORTELIUS - DECK PLANS

## DECK 5, 6 & 7

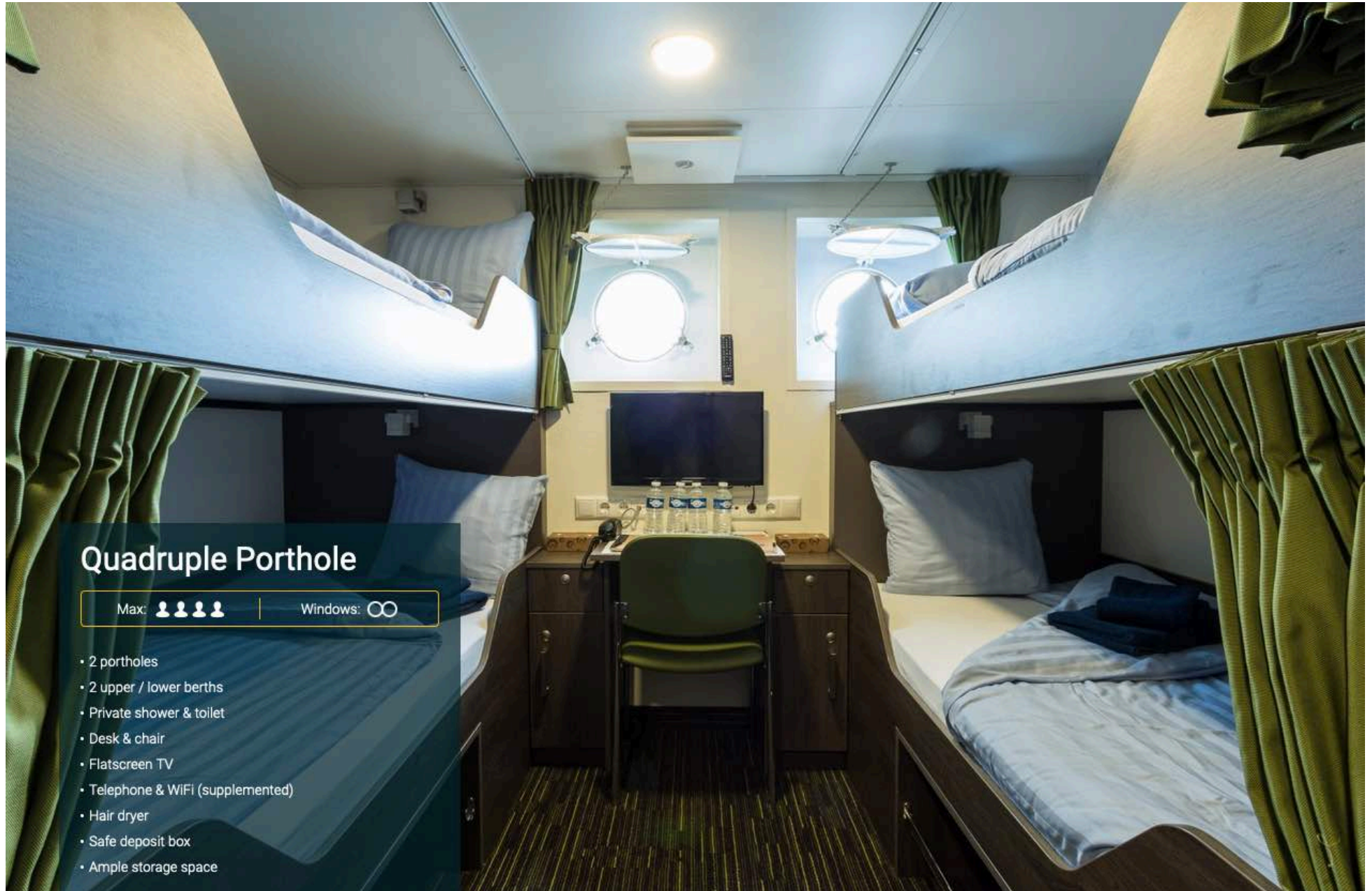


### KEY

m/v Ortelius deckplan		
<span style="color: red;">■</span> Superior	 Lower berth	
<span style="color: pink;">■</span> Twin Deluxe	 Upper and lower berth	<span style="border: 1px solid black; padding: 2px;">T</span> Toilet
<span style="color: purple;">■</span> Twin Window	 Double bed	<span style="border: 1px solid black; padding: 2px;">B</span> Bathroom
<span style="color: orange;">■</span> Twin Porthole		
<span style="color: brown;">■</span> Twin Porthole plus additional third bed		
<span style="color: blue;">■</span> Quadruple Porthole		



# M/V ORTELIUS - CABINS



## Quadruple Porthole

Max: 

Windows: 

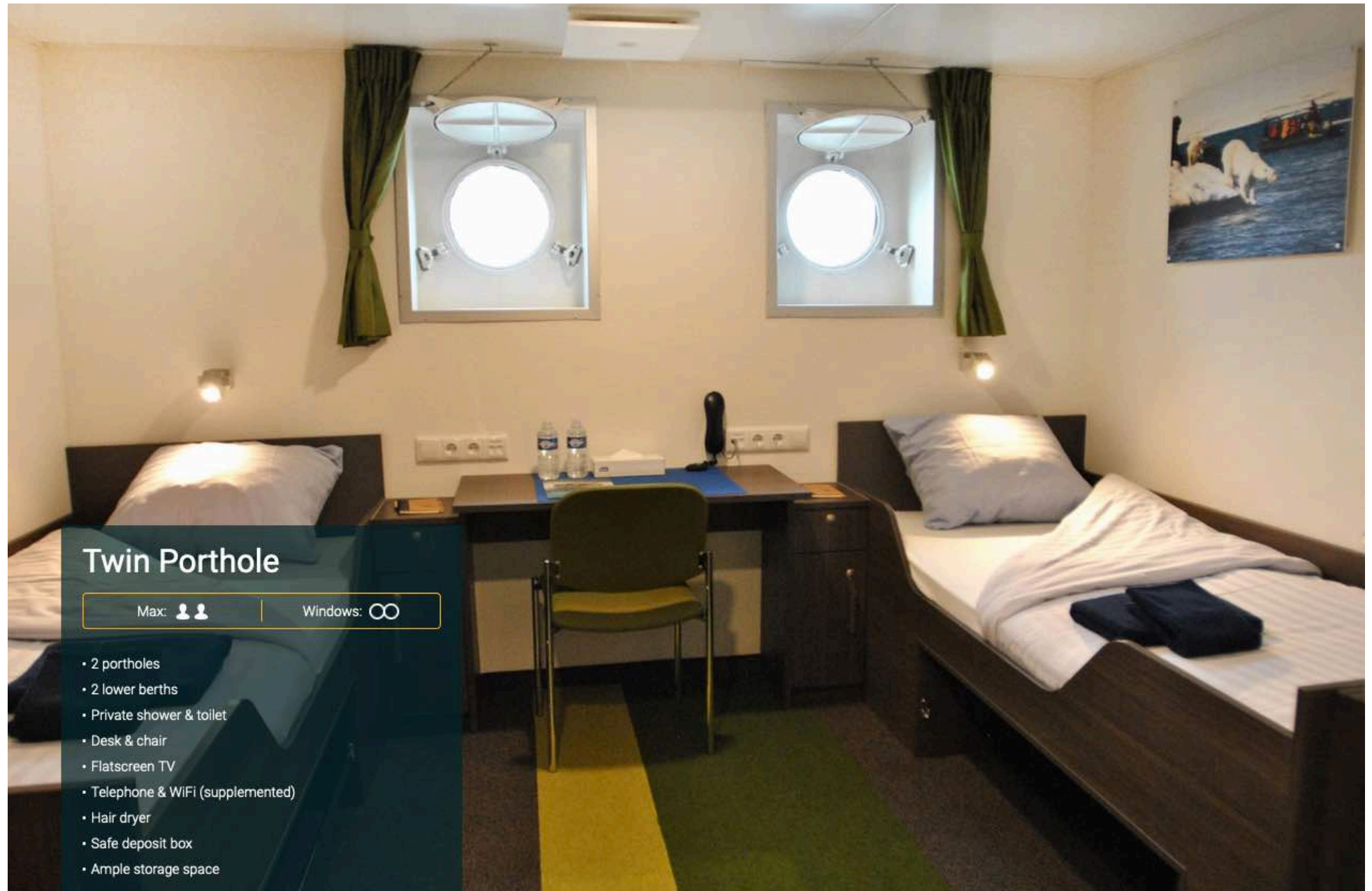
- 2 portholes
- 2 upper / lower berths
- Private shower & toilet
- Desk & chair
- Flatscreen TV
- Telephone & WiFi (supplemented)
- Hair dryer
- Safe deposit box
- Ample storage space



THELATINAMERICATRAVELCOMPANY.COM | Email: [info@thelatinamericatraveltravelcompany.com](mailto:info@thelatinamericatraveltravelcompany.com)  
UK ☎: +44 (0) 20 8191 7772 | Part of HeadsEast Ltd - UK business registration: 6717612



# M/V ORTELIUS - CABINS



## Twin Porthole

Max: 

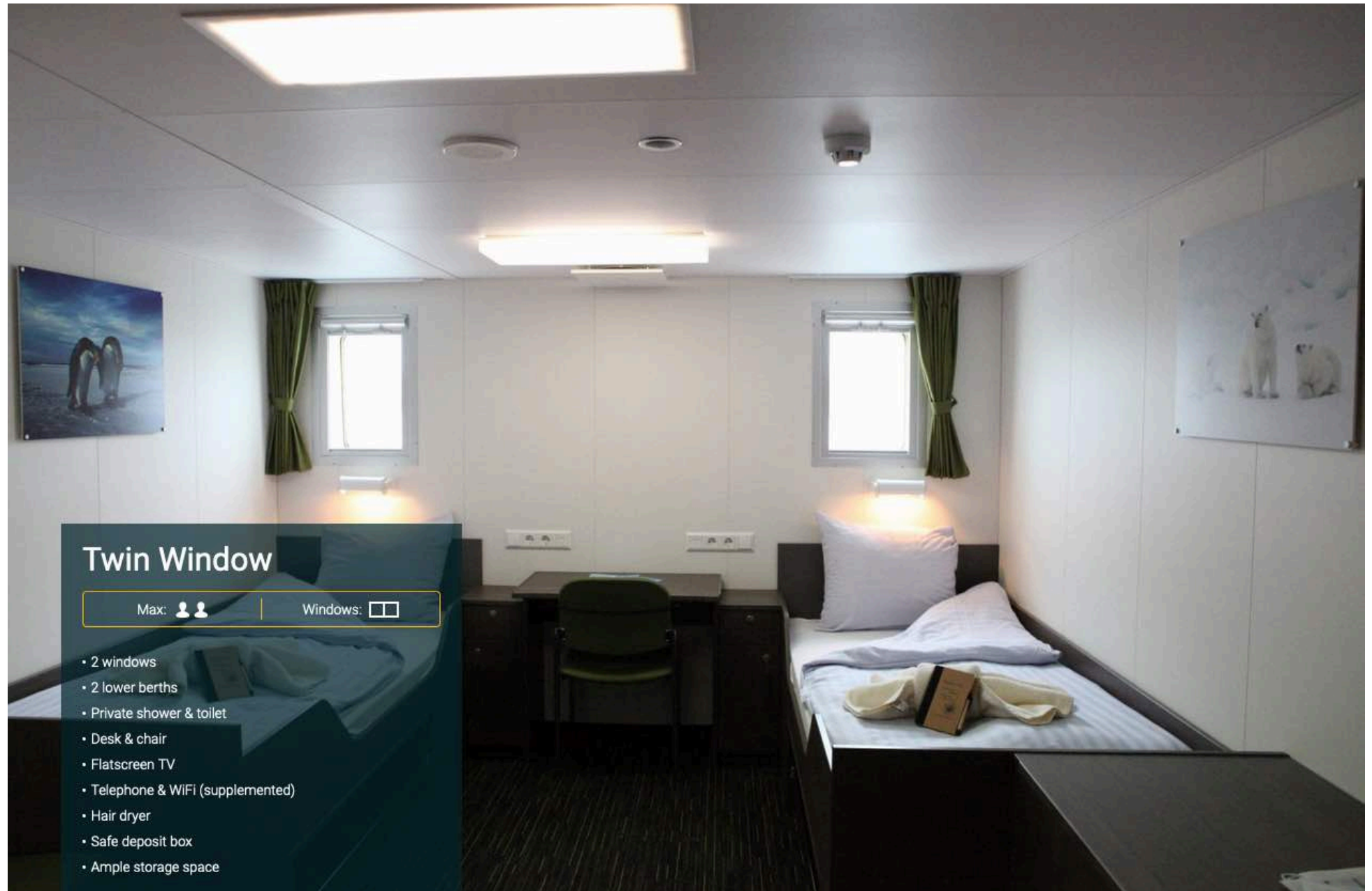
Windows: 

- 2 portholes
- 2 lower berths
- Private shower & toilet
- Desk & chair
- Flatscreen TV
- Telephone & WiFi (supplemented)
- Hair dryer
- Safe deposit box
- Ample storage space

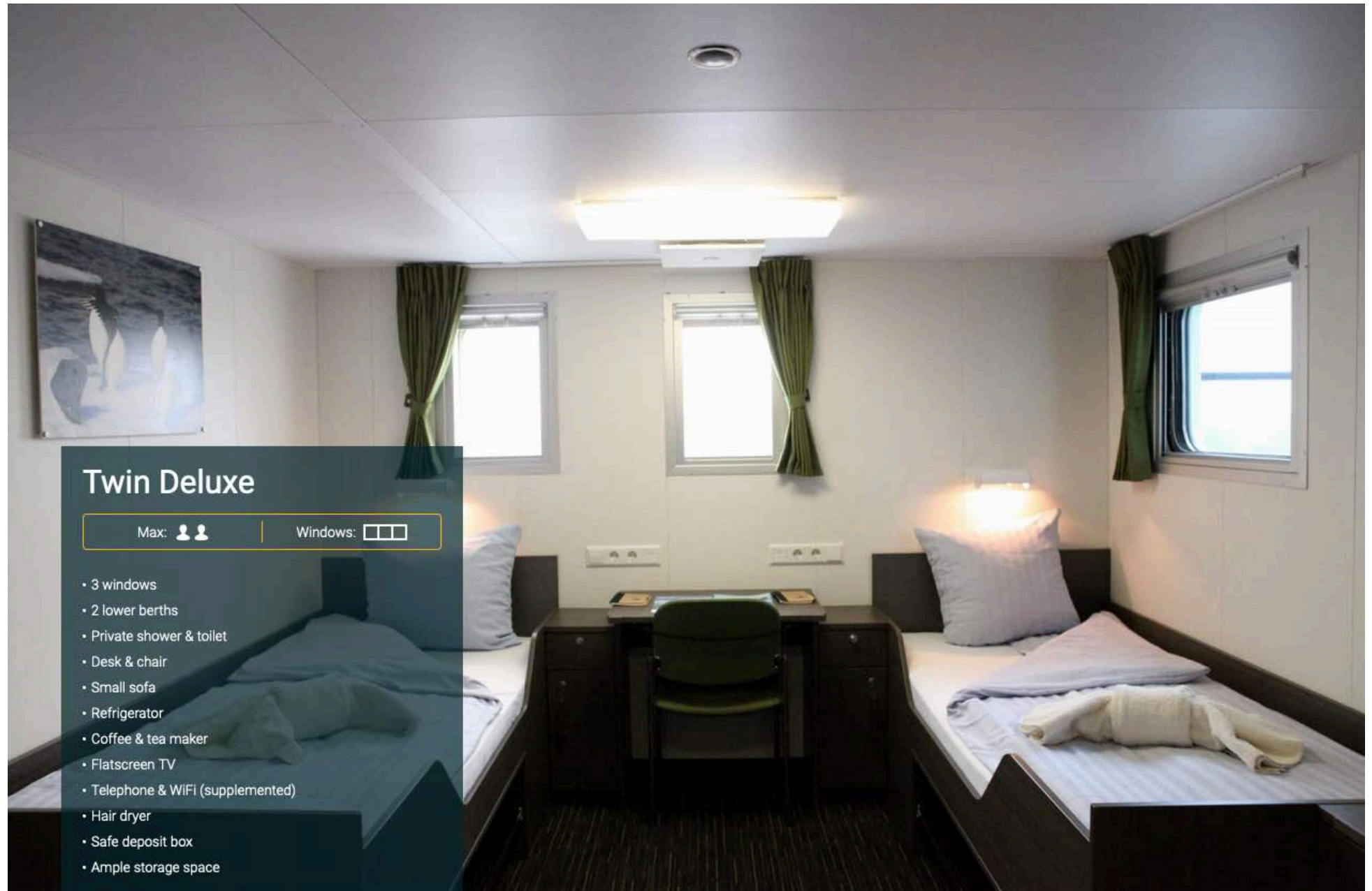


THELATINAMERICATRAVELCOMPANY.COM | Email: [info@thelatinamericatraveltravelcompany.com](mailto:info@thelatinamericatraveltravelcompany.com)  
UK ☎: +44 (0) 20 8191 7772 | Part of HeadsEast Ltd - UK business registration: 6717612









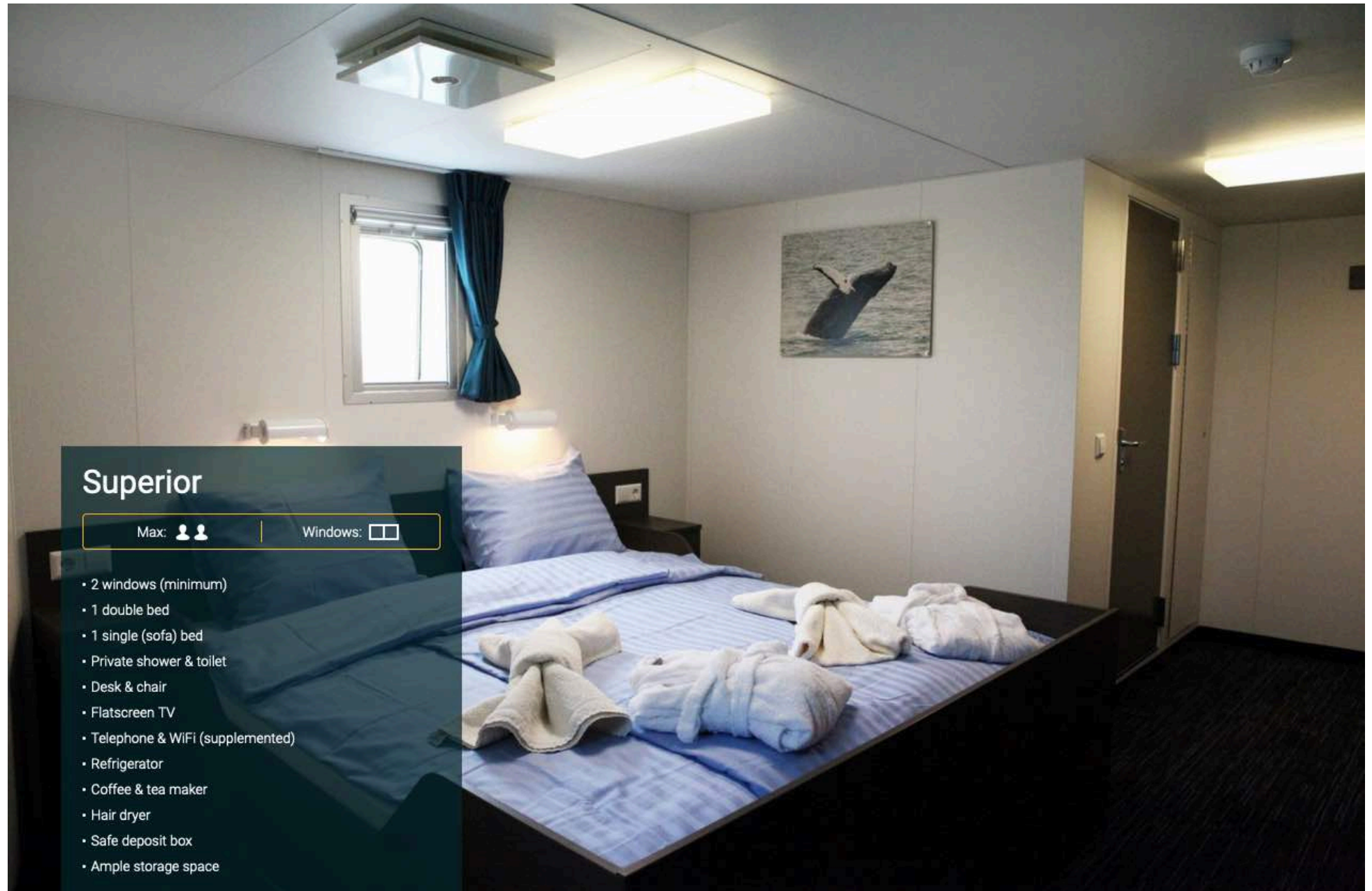
## Twin Deluxe

Max: 

Windows: 

- 3 windows
- 2 lower berths
- Private shower & toilet
- Desk & chair
- Small sofa
- Refrigerator
- Coffee & tea maker
- Flatscreen TV
- Telephone & WiFi (supplemented)
- Hair dryer
- Safe deposit box
- Ample storage space





## Superior

Max: 

Windows: 

- 2 windows (minimum)
- 1 double bed
- 1 single (sofa) bed
- Private shower & toilet
- Desk & chair
- Flatscreen TV
- Telephone & WiFi (supplemented)
- Refrigerator
- Coffee & tea maker
- Hair dryer
- Safe deposit box
- Ample storage space



## Ortelius: a Vessel with Comfort and Character

Please be aware that a small number of cabins may have a partially obstructed view due to the size of the windows and the design requirements of the ship. For example, some windows may be partly obstructed in the lower half by a gangway. The best view is always on the outer deck or the bridge. Though our voyages are primarily meant to offer our passengers an exploratory wildlife program with as much time ashore as possible, Ortelius offers all the comforts of a standard hotel — along with a bar and lecture room. Flexibility assures maximum wildlife opportunities. As such, Ortelius carries 10 Zodiacs with 60hp Yamaha engines.

## Age & Nationality

Passengers on a typical voyage range from in their 30s to their 80s, with the majority usually between 45 — 65. Our expeditions attract independent travellers from around the globe who are characterised by a strong interest in exploring remote regions. The camaraderie that develops on board is an important part of the Oceanwide experience, and many passenger groups include several nationalities.

## What to Wear

In keeping with the spirit of expedition, dress on board is informal. Bring casual and comfortable clothing for all activities, and keep in mind that much of the scenery can be appreciated from deck — which can be slippery. Bring sturdy shoes with no-slip soles, and make sure your parka is never far away in case one of our crew shouts “Whales!” over the loudspeaker and you have to dash outside in a moment’s notice. Opt for layers, as it is comfortably warm aboard the ship though often cold on deck.

## Non-Smoking Policy

We have a non-smoking policy inside all our vessels, though you can smoke in certain designated areas.

## How to Pay

Refreshments and souvenirs will be charged to your cabin. The day before departure you can settle your bill with the hotel manager, paying by credit card (Visa or MasterCard) or cash (euro, or in some cases dollar). Though the prices and standard currency on board is in the euro, other currencies may be accepted at the discretion of the hotel manager, at prevailing rates.

## Electric Current

The electrical supply aboard ship is 220v, 60Hz. Electrical outlets are standard European with two thick round pins, so some passengers may need a 220v/110v converter.

## Gratuities

The customary gratuity to the ship’s service personnel is made as a blanket contribution at the end of the voyage and is divided among the crew. Tipping is a personal matter, and the amount you wish to give is at your sole discretion. As a generally accepted guideline, we suggest 8 — 10 euros per passenger per day.

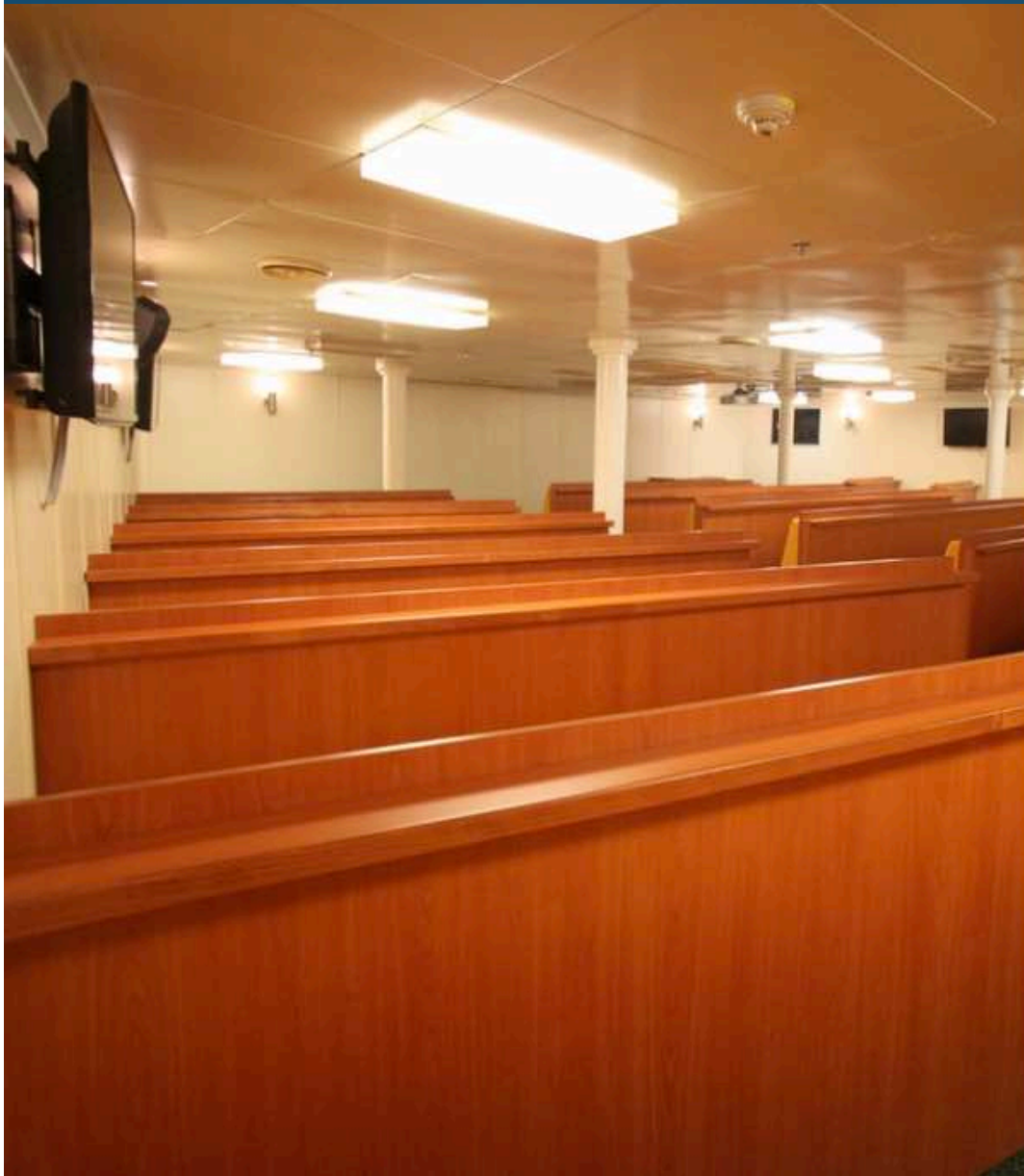
## Your Physical Condition

You must be in good overall health and be able to walk several hours per day. The expedition is ship-based and physically not very demanding, but we spend as much time as possible on shore. You are, however, welcome to remain aboard the ship if you prefer. To join most excursions you must be able to get up and down the steep gangway — from the ship to the water level — to board the Zodiacs. Staff will assist you in and out of the boats, and boarding will become progressively easier with practice, but conditions on shore can be slippery and rocky. Remember, you will be traveling in remote areas without access to sophisticated medical facilities, so you must not join this expedition if you have a life-threatening condition or need daily medical treatment.

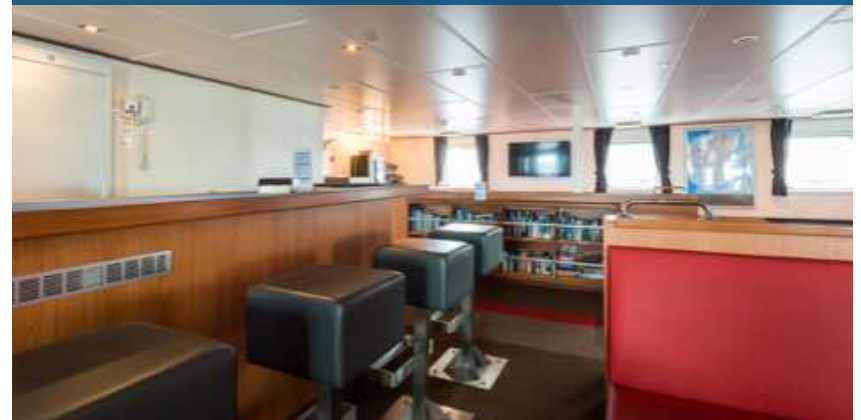


# M/V ORTELIUS - FACILITIES

LECTURE THEATRE

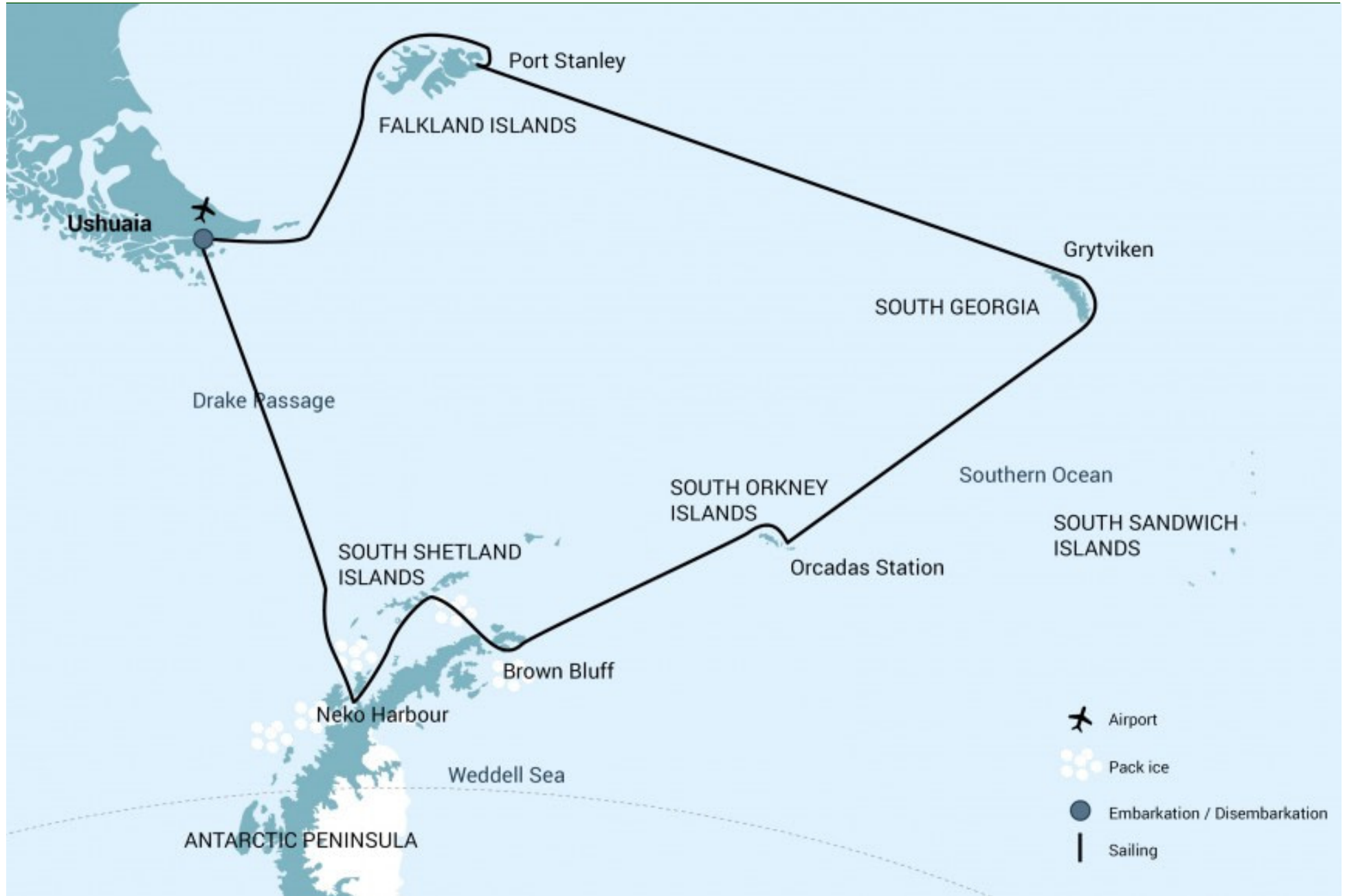


BAR LOUNGE



DINING





# YOUR DETAILED DAY BY DAY ITINERARY

## DAY 1

2nd FEBRUARY 2024

### JOIN SHIP

#### END OF THE WORLD, START OF YOUR ADVENTURE

Your voyage begins where the world drops off. Ushuaia, Argentina, reputed to be the southernmost city on the planet, is located on the far southern tip of South America. Starting in the afternoon, you embark from this small resort town on Tierra del Fuego, nicknamed “The End of the World,” and sail the mountain-fringed Beagle Channel for the remainder of the evening.

**IMPORTANT NOTE:** All itineraries are for guidance only. Programs may vary depending on ice, weather, and wildlife conditions. Landings are subject to site availabilities, permissions, and environmental concerns per IAATO regulations. Official sailing plans and landing slots are scheduled with IAATO prior to the start of the season, but the expedition leader determines the final plan. Flexibility is paramount for expedition cruises. The average cruising speed for our vessel is 10.5 knots.

 **Meals Included:** Dinner.

## OVERNIGHT

### M/V ORTELIUS



A classic old expedition vessel for the romantics adventurers who don't mind more basic, but still clean and comfortable, facilities.

[CLICK HERE TO LEARN MORE](#)



Photos for guidance only & not necessarily the room booked



# YOUR DETAILED DAY BY DAY ITINERARY

## DAY 2

3rd FEBRUARY 2024

### AT SEA

#### THE WINGED LIFE OF THE WESTERLIES OUT AT SEA

Several species of albatross follow the vessel into the westerlies, along with storm petrels, shearwaters, and diving petrels.

 **Meals Included:** Breakfast, Lunch & Dinner.

## OVERNIGHT

### M/V ORTELIUS



A classic old expedition vessel for the romantics adventurers who don't mind more basic, but still clean and comfortable, facilities.

[CLICK HERE TO LEARN MORE](#)



Photos for guidance only & not necessarily the room booked







# YOUR DETAILED DAY BY DAY ITINERARY

**DAY 3**

**4th FEBRUARY 2024**

## FALKLAND ISLANDS

### ARRIVAL IN THE FALKLANDS ISLANDS FOR TWO DAYS

The Falkland Islands offer an abundance of wildlife that is easily approachable, though caution is always advised. These islands are largely unknown gems, the site of a 1982 war between the UK and Argentina. Not only do various species of bird live here, but chances are great you'll see both Peale's dolphins and Commerson's dolphins in the surrounding waters.

During this segment of the voyage, you may visit the following sites:

**Carcass Island:** Despite its name, this island is pleasantly rodent-free and hence bounteous with birdlife and many endemic species. Anything from breeding Magellanic penguins and gentoos to numerous waders and passerine birds (including Cobb's wrens and tussock-birds) live here.

**Saunders Island:** On Saunders Island you can see the black-browed albatross and its sometimes-clumsy landings, along with breeding imperial shags and rockhopper penguins. King penguins, Magellanic penguins, and gentoos are also found here.

 **Meals Included:** Breakfast, Lunch & Dinner.

**OVERNIGHT**

**M/V ORTELIUS**



A classic old expedition vessel for the romantics adventurers who don't mind more basic, but still clean and comfortable, facilities.

[CLICK HERE TO LEARN MORE](#)



Photos for guidance only & not necessarily the room booked



# YOUR DETAILED DAY BY DAY ITINERARY

**DAY 4**

**5th FEBRUARY 2024**

## **FALKLAND ISLANDS**

### **PORT STANLEY - THE SEAT OF FALKLANDS CULTURE**

The capital of the Falklands and centre of its culture, Port Stanley has some Victorian-era charm: colourful houses, well-tended gardens, and English-style pubs are all to be found here. You can also see several century-old clipper ships nearby, silent witnesses to the hardships of 19th century sailors. The small but interesting museum is also worth a visit, covering the early days of settlement up to the Falklands War.

Approximately 2,100 people live in Port Stanley. Admission to the museum is included.

 **Meals Included:** Breakfast, Lunch & Dinner.

**OVERNIGHT**

**M/V ORTELIUS**



A classic old expedition vessel for the romantics adventurers who don't mind more basic, but still clean and comfortable, facilities.

[CLICK HERE TO LEARN MORE](#)



Photos for guidance only & not necessarily the room booked





# YOUR DETAILED DAY BY DAY ITINERARY

**DAY 5**

**6th FEBRUARY 2024**

## FALKLAND ISLANDS

### SEE THE WILDLIFE OF THE SOUTH FALKLANDS

The seldom-visited southern islands are a rare treat, and we'll aim to give you a thorough tour of their rugged beauty.

This area is a haven for wildlife of many types, especially birdlife. George Island and Barren Island in particular support more than 40 bird species, along with roughly 650 pairs of southern giant petrels. You also have a good chance of spotting elephant seals and southern sea lion colonies.

 **Meals Included:** Breakfast, Lunch & Dinner.

**OVERNIGHT**

### M/V ORTELIUS



A classic old expedition vessel for the romantics adventurers who don't mind more basic, but still clean and comfortable, facilities.

[CLICK HERE TO LEARN MORE](#)



Photos for guidance only & not necessarily the room booked



THELATINAMERICATRAVELCOMPANY.COM | Email: [info@thelatinamericatraveltravelcompany.com](mailto:info@thelatinamericatraveltravelcompany.com)  
UK ☎: +44 (0) 20 8191 7772 | Part of HeadsEast Ltd - UK business registration: 6717612



# YOUR DETAILED DAY BY DAY ITINERARY

**DAY 6 & 7**

**7th & 8th FEBRUARY 2024**

## **AT SEA**

### **ONCE MORE TO THE SEA TOWARDS SOUTH GEORGIA**

En route to South Georgia, you now cross the Antarctic Convergence. The temperature cools considerably within the space of a few hours, and nutritious water rises to the surface of the sea due to colliding water columns. This phenomenon attracts a multitude of seabirds near the ship, including several species of albatross, shearwaters, petrels, prions, and skuas.

 **Meals Included:** Breakfast, Lunch & Dinner.

**OVERNIGHT**

## **M/V ORTELIUS**



A classic old expedition vessel for the romantics adventurers who don't mind more basic, but still clean and comfortable, facilities.

[CLICK HERE TO LEARN MORE](#)



Photos for guidance only & not necessarily the room booked





# YOUR DETAILED DAY BY DAY ITINERARY

**DAY 8**

**9th FEBRUARY 2024**

## SOUTH GEORGIA

### ARRIVAL IN SOUTH GEORGIA JOURNEY FOR 4 DAYS

Today you arrive at the first South Georgia activity site. Please keep in mind that weather conditions in this area can be challenging, largely dictating the program.

Over the next several days, you have a chance to visit the following sites:

Prion Island – This location is closed during the early part of the wandering albatross breeding season (November 20 – January 7). From January on, the breeding adults have found their partners and are sitting on eggs or nursing their chicks. Enjoy witnessing the gentle nature of these animals, which possess the largest wingspan of any bird in the world.

Fortuna Bay – A beautiful outwash plain from Fortuna Glacier is home to a large number of king penguins and seals. Here you may also have the chance to follow the final leg of Shackleton’s route to the abandoned whaling village of Stromness. This path cuts across the mountain pass beyond Shackleton’s Waterfall, and as the terrain is partly swampy, be prepared to cross a few small streams.

 **Meals Included:** Breakfast, Lunch & Dinner.

**OVERNIGHT**

**M/V ORTELIUS**



A classic old expedition vessel for the romantics adventurers who don't mind more basic, but still clean and comfortable, facilities.

[CLICK HERE TO LEARN MORE](#)



Photos for guidance only & not necessarily the room booked



# YOUR DETAILED DAY BY DAY ITINERARY

**DAY 9 - 11**

**10th - 12th FEBRUARY 2024**

## SOUTH GEORGIA

### CONTINUE TO EXPLORE SOUTH GEORGIA

Salisbury Plain, St. Andrews Bay, Gold Harbour – These sites not only house the three largest king penguin colonies in South Georgia, they're also three of the world's largest breeding beaches for Antarctic fur seals. Literally millions breed on South Georgia during December and January. Only during the mid-season do they peak in their breeding cycle. There will be some young adult Elephant seals as well as this seasons 'Weaner's; the young Elephant Seals that have been left to fend for themselves.

Watch your step and stay cool when walking the beaches during this time.

Grytviken – In this abandoned whaling station, king penguins walk the streets and elephant seals lie around like they own the place – because they basically do. Here you might be able to see the South Georgia Museum as well as Shackleton's grave.

In the afternoon of day 10 and depending on the conditions, we will start sailing southwards in the direction of the South Orkney Islands.

 **Meals Included:** Breakfast, Lunch & Dinner.

**OVERNIGHT**

**M/V ORTELIUS**



A classic old expedition vessel for the romantics adventurers who don't mind more basic, but still clean and comfortable, facilities.

[CLICK HERE TO LEARN MORE](#)



Photos for guidance only & not necessarily the room booked



THELATINAMERICATRAVELCOMPANY.COM | Email: [info@thelatinamericatraveltravelcompany.com](mailto:info@thelatinamericatraveltravelcompany.com)  
UK ☎: +44 (0) 20 8191 7772 | Part of HeadsEast Ltd - UK business registration: 6717612





# ANTARCTICA SCENERY



THELATINAMERICATRAVELCOMPANY.COM | Email: [info@thelatinamericatraveltravelcompany.com](mailto:info@thelatinamericatraveltravelcompany.com)  
UK ☎: +44 (0) 20 8191 7772 | Part of HeadsEast Ltd - UK business registration: 6717612



# YOUR DETAILED DAY BY DAY ITINERARY

**DAY 12**

**13th FEBRUARY 2024**

 **AT SEA**

## SOUTHWARD BOUND TOWARDS THE ANTARCTIC PENINSULA

There may be sea ice on this route, and at the edge of the ice some south polar skuas and snow petrels could join the other seabirds trailing the vessel south.

 **Meals Included:** Breakfast, Lunch & Dinner.

**DAY 13**

**14th FEBRUARY 2024**

 **AT SEA**

## THE SCENIC VISTAS OF THE SOUTH ORKNEY ISLANDS

Depending on the conditions, you might visit Orcadas Base, an Argentine scientific station on Laurie Island in the South Orkney archipelago. The personnel here will happily show you their facility, where you can enjoy expansive views of the surrounding glaciers. If a visit isn't possible, you may instead land in Coronation Island's Shingle Cove.

 **Meals Included:** Breakfast, Lunch & Dinner.

**OVERNIGHT**

**M/V ORTELIUS**



A classic old expedition vessel for the romantics adventurers who don't mind more basic, but still clean and comfortable, facilities.

[CLICK HERE TO LEARN MORE](#)



Photos for guidance only & not necessarily the room booked



THELATINAMERICATRAVELCOMPANY.COM | Email: [info@thelatinamericatraveltravelcompany.com](mailto:info@thelatinamericatraveltravelcompany.com)  
UK ☎: +44 (0) 20 8191 7772 | Part of HeadsEast Ltd - UK business registration: 6717612



# YOUR DETAILED DAY BY DAY ITINERARY

**DAY 14**

**15th FEBRUARY 2024**

## SOUTH ORKNEY

### LAST PUSH ACROSS THE SEA TO THE ANTARCTIC

Enormous icebergs and a fair chance of fin whale sightings ensure there's never a dull moment on this last sea voyage south. Also, your best chance to spot Antarctic petrels is here.

 **Meals Included:** Breakfast, Lunch & Dinner.



**OVERNIGHT**

## M/V ORTELIUS



A classic old expedition vessel for the romantics adventurers who don't mind more basic, but still clean and comfortable, facilities.

[CLICK HERE TO LEARN MORE](#)



Photos for guidance only & not necessarily the room booked



THELATINAMERICATRAVELCOMPANY.COM | Email: [info@thelatinamericatraveltravelcompany.com](mailto:info@thelatinamericatraveltravelcompany.com)  
UK ☎: +44 (0) 20 8191 7772 | Part of HeadsEast Ltd - UK business registration: 6717612



# YOUR DETAILED DAY BY DAY ITINERARY

**DAY 15 - 17**

**16th - 18th FEBRUARY 2024**

## **ANTARCTICA**

### THREE DAYS EXPLORING THE AWE-INSPIRING ANTARCTIC PENINSULA

If the ice conditions permit, you now sail into the Weddell Sea. Here colossal tabular icebergs herald your arrival to the eastern side of the Antarctic Peninsula. Paulet Island, with its large population of Adélie penguins, is a possible stop. You might also visit Brown Bluff, located in the ice-clogged Antarctic Sound, where you could get the chance to set foot on the Antarctic Continent itself.

If conditions aren't favourable to enter the Weddell Sea from the east, the ship will set course for Elephant Island and head into the Bransfield Strait, between the South Shetland Islands and the Antarctic Peninsula. Here you can attempt to access the Antarctic Sound from the northwest.

The breathtaking scenery continues in the Bransfield Strait and, if conditions allow further South in the Gerlache Strait. Conditions on the Drake Passage determine the exact time of departure.

 **Meals Included:** Breakfast, Lunch & Dinner.

**OVERNIGHT**

### **M/V ORTELIUS**



A classic old expedition vessel for the romantics adventurers who don't mind more basic, but still clean and comfortable, facilities.

[CLICK HERE TO LEARN MORE](#)



Photos for guidance only & not necessarily the room booked



THELATINAMERICATRAVELCOMPANY.COM | Email: [info@thelatinamericatraveltravelcompany.com](mailto:info@thelatinamericatraveltravelcompany.com)  
UK ☎: +44 (0) 20 8191 7772 | Part of HeadsEast Ltd - UK business registration: 6717612





# YOUR DETAILED DAY BY DAY ITINERARY

**DAY 18**

**19th FEBRUARY 2024**

## **AT SEA**

### **HEAD BACK ACROSS THE DRAKE PASSAGE TO USHUAIA**

Your return voyage across the Drake Passage is far from lonely. While crossing the Drake, you're again greeted by the vast array of seabirds remembered from the passage south. But they seem a little more familiar to you now, and you to them.

 **Meals Included:** Breakfast, Lunch & Dinner.



**OVERNIGHT**

## **M/V ORTELIUS**



A classic old expedition vessel for the romantics adventurers who don't mind more basic, but still clean and comfortable, facilities.

[CLICK HERE TO LEARN MORE](#)



Photos for guidance only & not necessarily the room booked



THELATINAMERICATRAVELCOMPANY.COM | Email: [info@thelatinamericatraveltravelcompany.com](mailto:info@thelatinamericatraveltravelcompany.com)  
UK ☎: +44 (0) 20 8191 7772 | Part of HeadsEast Ltd - UK business registration: 6717612



# YOUR DETAILED DAY BY DAY ITINERARY

**DAY 19**

**20th FEBRUARY 2024**

 **AT SEA**

**LAST DAY ON THE DRAKE BEFORE ARRIVAL IN ARGENTINA TOMORROW**

 **Meals Included:** Breakfast, Lunch & Dinner.



**OVERNIGHT**

**M/V ORTELIUS**



A classic old expedition vessel for the romantics adventurers who don't mind more basic, but still clean and comfortable, facilities.

[CLICK HERE TO LEARN MORE](#)



Photos for guidance only & not necessarily the room booked



THELATINAMERICATRAVELCOMPANY.COM | Email: [info@thelatinamericatraveltravelcompany.com](mailto:info@thelatinamericatraveltravelcompany.com)  
UK ☎: +44 (0) 20 8191 7772 | Part of HeadsEast Ltd - UK business registration: 6717612



**DAY 20**

**21st FEBRUARY 2024**

## USHUAIA

### ARRIVAL BACK IN ARGENTINA

Every adventure, no matter how grand, must eventually come to an end. It's now time to disembark in Ushuaia, but with memories that will accompany you wherever your next adventure lies.

On arrival a transfer to your hotel with the rest of the day free to get used to dry land again!

---

 **Meals Included:** Breakfast.



**LATC Founder Chris**

*"Antarctica is without doubt the most amazing trip I have made anywhere in the world and totally unique from every aspect and I will be going back to see more of the frozen continent on a regular basis. It is both a privilege and a responsibility to be able to send our clients."*





antarctica  
flora & fauna

INFOGRAPHIC

ANIMALS:

hourglass dolphin, weddell seal, crabeater seal, leopard seal, ross seal

SEA LIFE:

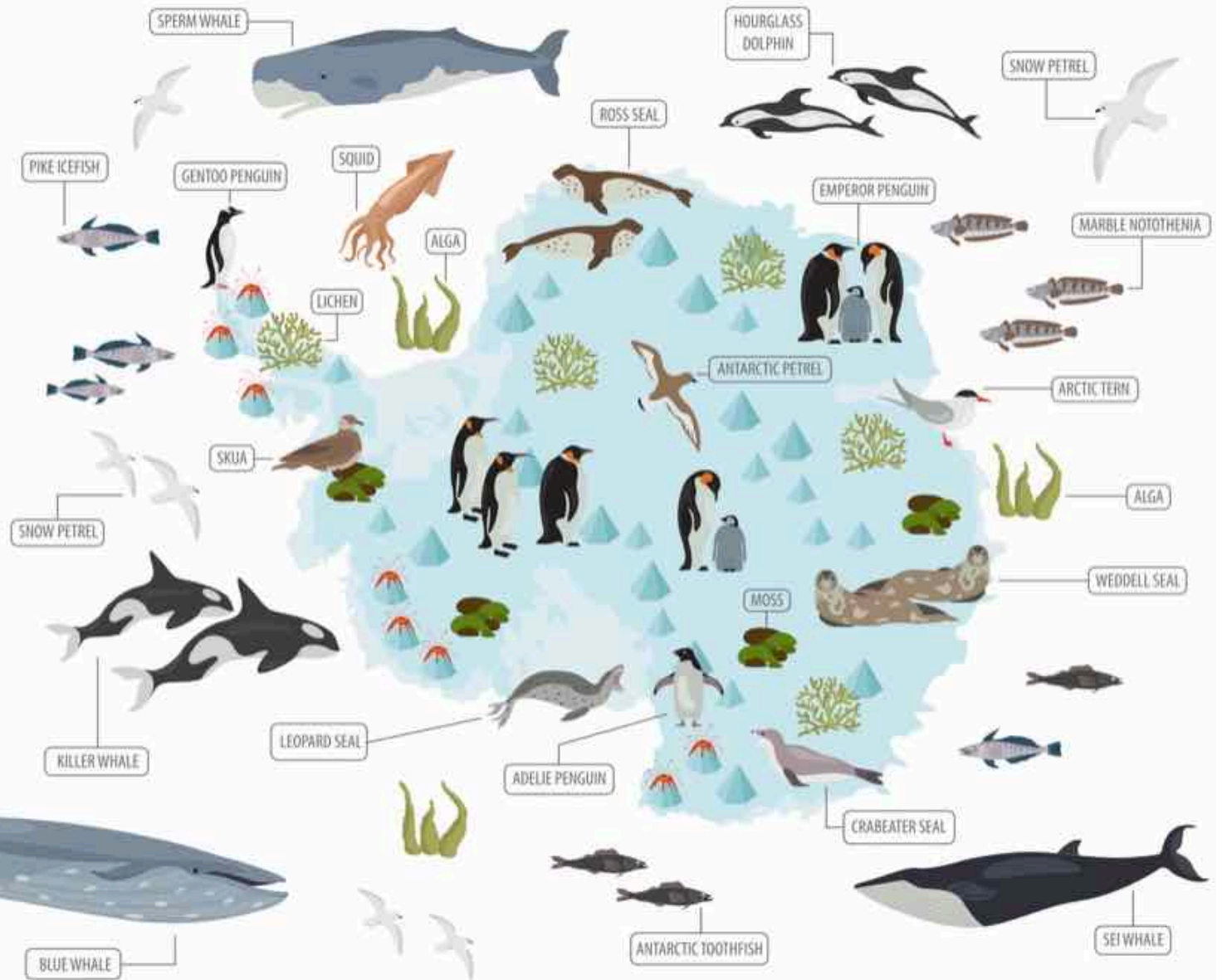
sperm whale, blue whale, killer whale, squid, sei whale, marble notothenia, antarctic toothfish, pike icefish

BIRDS:

emperor penguin, adelic penguin, gentoo penguin, antarctic petrel, snow petrel, skua, arctic tern

PLANTS:

lichen, moss, alga



TRIP CODE: OTL29-24: FALKLANDS, SOUTH GEORGIA & ANTARCTICA - START & FINISH DATES

Starts Ushuaia 2nd February 2024 and Finishes Ushuaia 21st February 2024 - Guided in: English

CABIN	EURO	GBP**	USD**
4 berth Quadruple Porthole - price per berth	€13,550	£12,195	US\$14,905
3 berth Triple Porthole - price per berth	€16,350	£14,715	US\$17,985
Twin Porthole - price per berth	€16,350	£14,715	US\$17,985
Twin Porthole - single occupancy	€27,795	£25,016	US\$30,575
Twin Window - price per berth	€17,100	£15,390	US\$18,810
Twin Window - single occupancy	€29,070	£26,163	US\$31,977
Twin Deluxe - price per berth	€18,150	£16,335	US\$19,965
Twin Deluxe - single occupancy	€30,855	£27,770	US\$33,941
Superior - price per person (only double bed)	€19,550	£17,595	US\$21,505
Superior - single occupancy	€33,235	£29,912	US\$36,559

**NOTE:** If you book a berth as a single person in a shared cabin the other occupants of the cabin will be of the same gender.

**\*\* GBP and USD prices** are for guidance only and final price will be based on the exchange rate at time of booking.

**IMPORTANT NOTE:** All itineraries are for guidance only. Programs may vary depending on ice, weather, and wildlife conditions. Landings are subject to site availabilities, permissions, and environmental concerns per IAATO regulations. Official sailing plans and landing slots are scheduled with IAATO prior to the start of the season, but the expedition leader determines the final plan. Flexibility is paramount for expedition cruises. The average cruising speed for our vessel is 10.5 knots.



## INCLUSIONS & EXCLUSIONS FOR THIS ITINERARY

### ■ ANTARCTIC CRUISE:

- ✓ 19 night / 20 Day Antarctic Cruise on the M/V Ortelius - Cabin TBC.

#### Cruise Includes:

- ✓ Voyage aboard the indicated vessel as indicated in the itinerary
- ✓ All meals throughout the voyage aboard the ship including snacks, coffee and tea.
- ✓ All shore excursions and activities throughout the voyage by Zodiac.
- ✓ Program of lectures by noted naturalists and leadership by experienced expedition staff.
- ✓ Free use of rubber boots and snowshoes.
- ✓ Luggage transfer from pick-up point to the vessel on the day of embarkation, in Ushuaia.
- ✓ Pre-scheduled group transfer from the vessel to the airport in Ushuaia (directly after disembarkation).
- ✓ All miscellaneous service taxes and port charges throughout the programme.
- ✓ Comprehensive pre-departure material.

#### Cruise Excludes:

- ✓ Any airfare, whether on scheduled or charter flights
- ✓ Pre- and post- land arrangements.
- ✓ Passport and visa expenses.
- ✓ Government arrival and departure taxes.
- ✓ Meals ashore.
- ✓ Baggage, cancellation and personal insurance (which is strongly recommended).
- ✓ Excess baggage charges and all items of a personal nature such as laundry, bar, beverage charges and telecommunication charges.
- ✓ The customary gratuity at the end of the voyages for stewards and other service personnel aboard (guidelines will be provided).

**Important Note:** All itineraries are for guidance only. Programs may vary depending on ice, weather, and wildlife conditions. Landings are subject to site availabilities, permissions, and environmental concerns per IAATO regulations. Official sailing plans and landing slots are scheduled with IAATO prior to the start of the season, but the expedition leader determines the final plan. Flexibility is paramount for expedition cruises. The average cruising speed for our vessel is 10.5 knots.

