

M/V PLANCIUS

FALKLANDS, SOUTH GEORGIA & ANTARCTICA

18 NIGHTS | TRIP CODE: OTL23-23

23rd NOVEMBER - 11th DECEMBER 2023

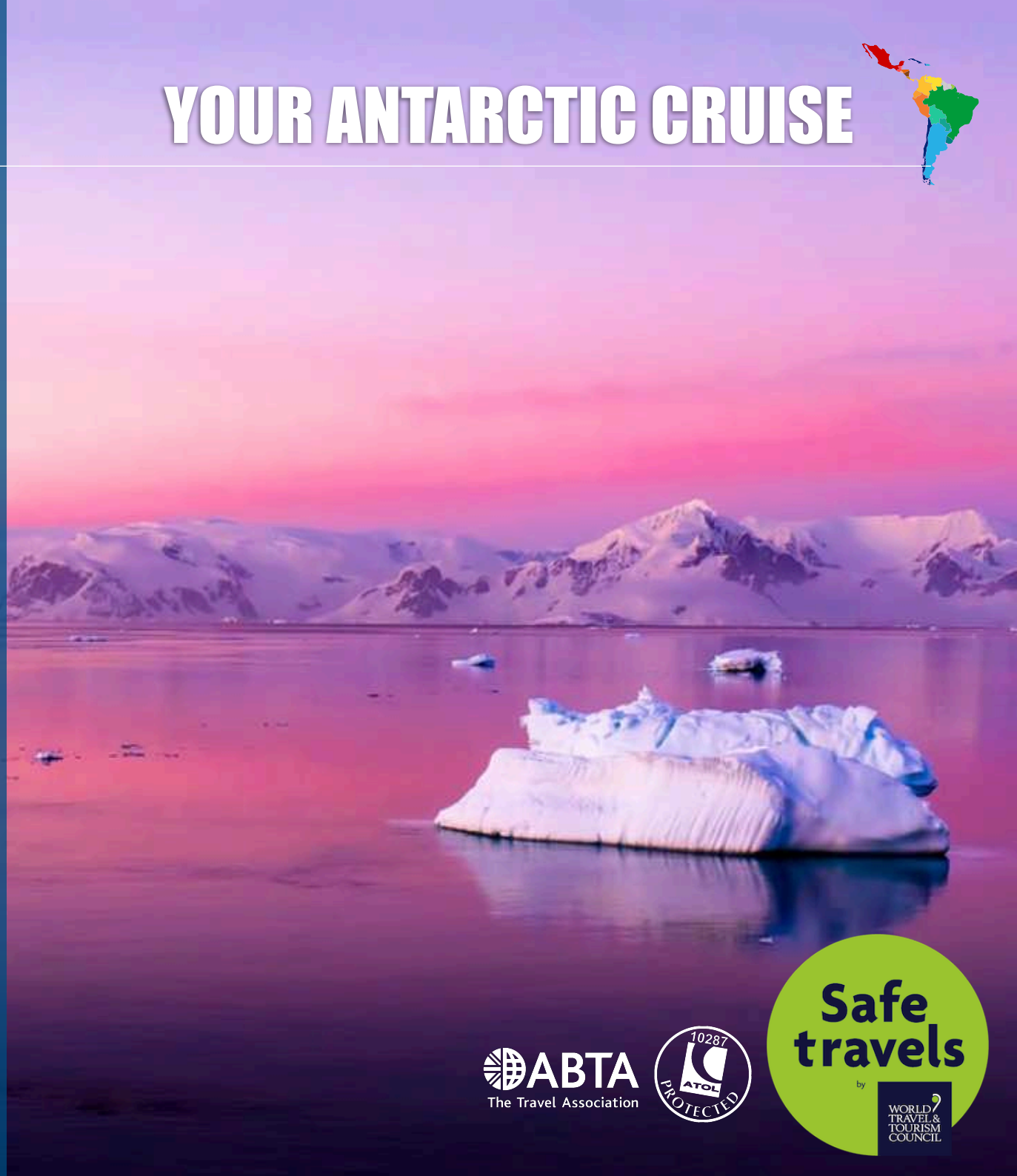
USHUAIA - USHUAIA

This Falkland Islands, South Georgia, and Antarctic Peninsula cruise is an animal-lover's dream come true. The expedition explores one of the last untamed areas on Earth – a land of ruggedly beautiful landscapes and amazingly varied wildlife.

PLEASE NOTE:

All itineraries are for guidance only. Programs may vary depending on ice, weather, and wildlife conditions. Landings are subject to site availabilities, permissions, and environmental concerns per IAATO regulations. Official sailing plans and landing slots are scheduled with IAATO prior to the start of the season, but the expedition leader determines the final plan. Flexibility is paramount for expedition cruises. The average cruising speed for our vessel is 10.5 knots.

YOUR ANTARCTIC CRUISE



Safe travels

by

WORLD TRAVEL & TOURISM COUNCIL

M/V PLANCIUS - ABOUT THE SHIP

Plancius was built in 1976 as an oceanographic research vessel for the Royal Dutch Navy and was named Hr. Ms. Tydeman. The ship sailed for the Dutch Navy until June 2004 when it was purchased by Oceanwide Expeditions.

Plancius is a Dutch flagged completely rebuilt and converted passenger vessel complies with the latest SOLAS- regulations, classed by Lloyd's Register in London. The name Plancius is a tribute to the predecessor of Oceanwide Expeditions (Plancius Foundation, 1981-1996), the first cruise operator on a yearly base in Spitsbergen, offering voyages with a small cruise vessel named Plancius.

- Comfortable and nicely decorated, but not luxurious. It's made for explorers
- Spacious yet small ship character, comfort & style and modern technology
- Base camp for active, adventure and wildlife minded modern explorers
- Small ship operation: 108 passengers in 50 passenger cabins with private facilities (toilet, sink shower)
- 4 quadruple porthole cabins, 9 twin port- hole cabins, 25 twin cabins with window and 2 twin deluxe cabins, - all (ca. 15 m2), and 10 superior cabins ca. 21 m2)
- All cabins offer lower berths (either two single beds or one queen-size bed), except for the 4 quadruple cabins (2 bunk beds),
- Restaurant/lecture room (deck 3) and a spacious observation lounge (with bar, deck 5) with large windows offer full panorama view
- Large open deck spaces (with full walk-around possibilities on deck 4), giving excellent opportunities to enjoy the scenery and wildlife
- Equipped with 10 Mark V inflatable zodiacs, including 40 HP 4-stroke outboard engines
- 2 gangways on starboard side, that guarantees a swift zodiac operation
- The ship is manned by 17 nautical crew, 19 hotel staff (6 chefs, 1 hotel manager, 1 steward-barman and 11 stewards / cabin cleaners), 7 expedition staff in Antarctica (1 expedition leader and 6 guides lecturers), for the Arctic we will have 8 expedition staff (1 expedition leader and 7 guides/ lecturers) and 1 doctor.

SPECIFICATIONS

Registered: The Netherlands

Length: 89 meters

Breadth: 14.5 meters

Draft: 5 meters

Ice class: 1D

Displacement: 3,211 tons

Propulsion: 3x Diesel-Electric

Average cruising speed: 10,5 knots

Passengers: 108 in 50 cabins

Crew, guides, doctor: 37 / 8 / 1

Various decks refurbished 2009-2018-2019

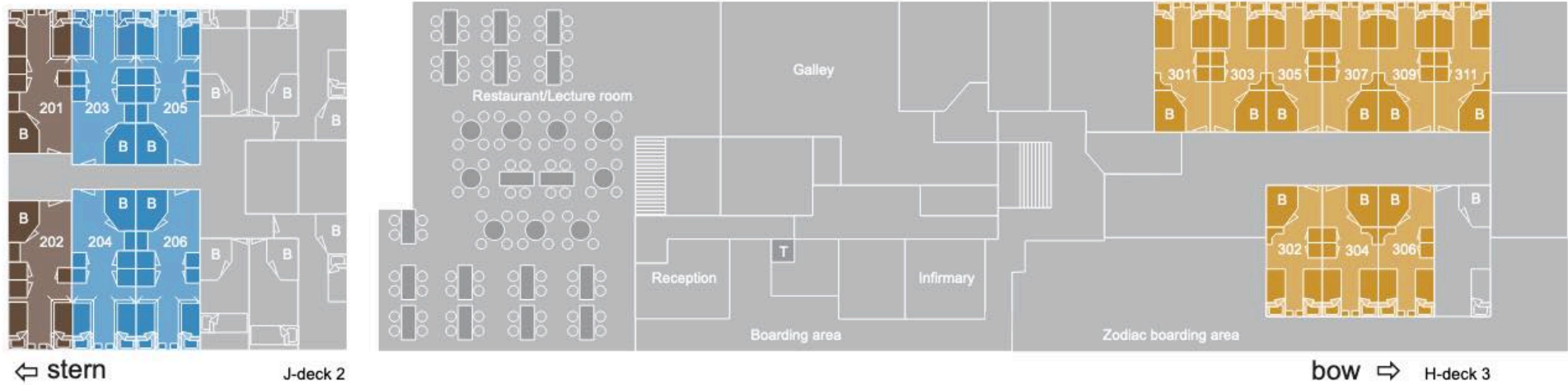


M/V PLACIUS

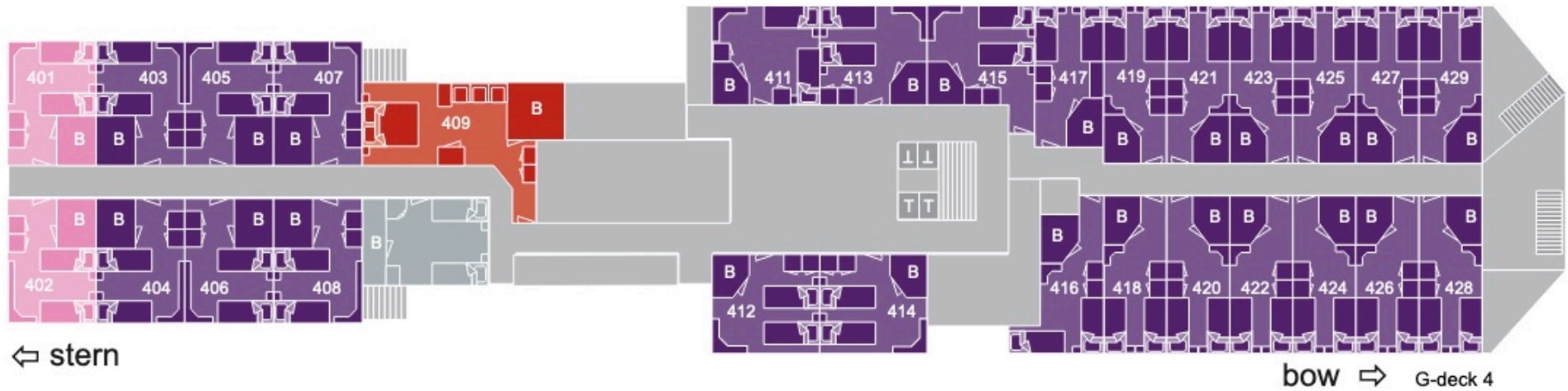


M/V PLANGIUS - DECK PLANS

DECK 2 & 3

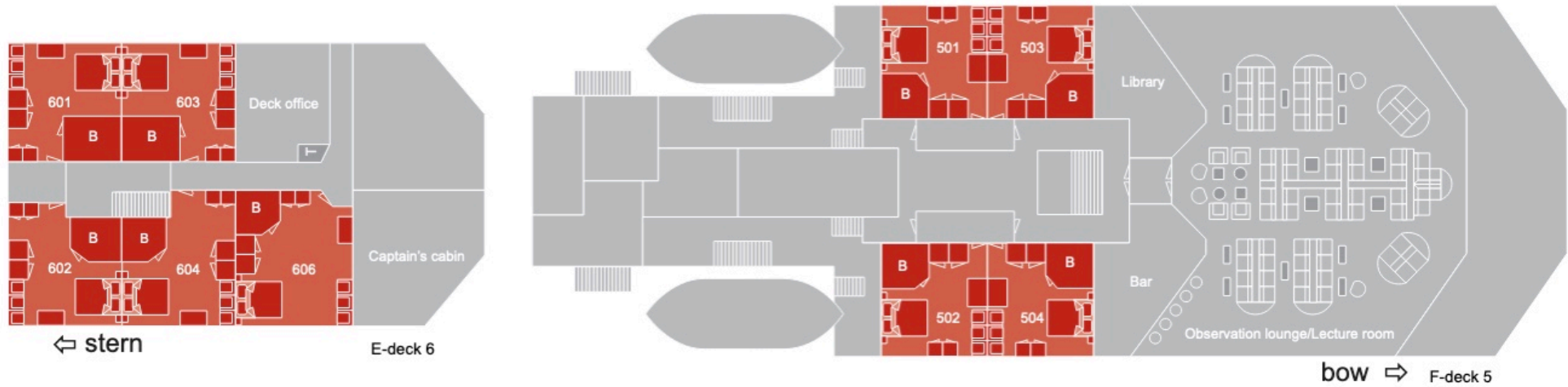


DECK 4














M/V PLACIUS - DECK PLANS

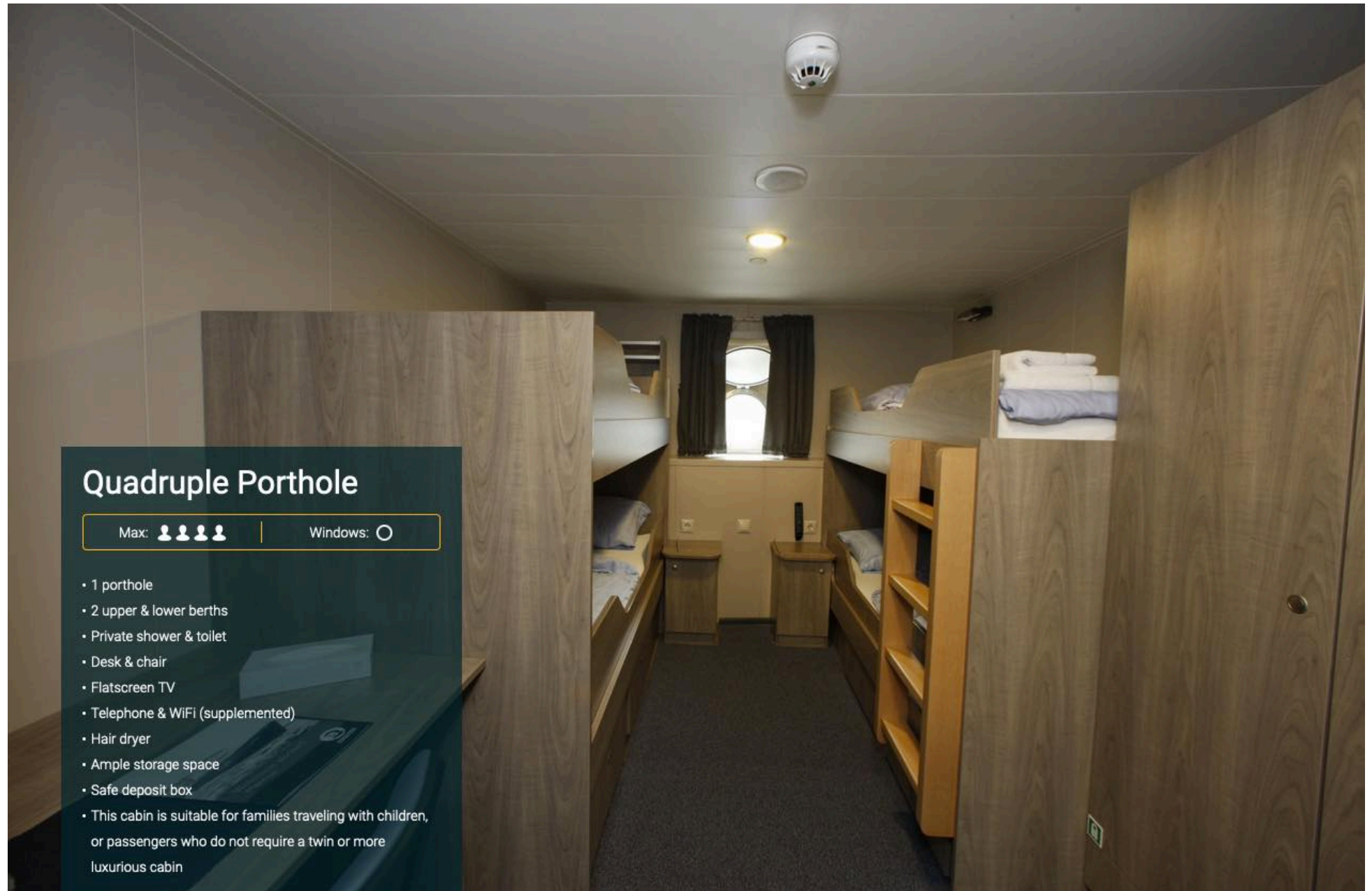
DECK 5 & 6



KEY


m/v Placius deckplan		
	Superior	
	Twin Deluxe	
	Twin Window	
	Twin Porthole	
	Twin Porthole plus additional third bed	
	Quadruple Porthole	
	lower berth	
	upper and lower berth	
	double bed	
		Toilet
		Bathroom





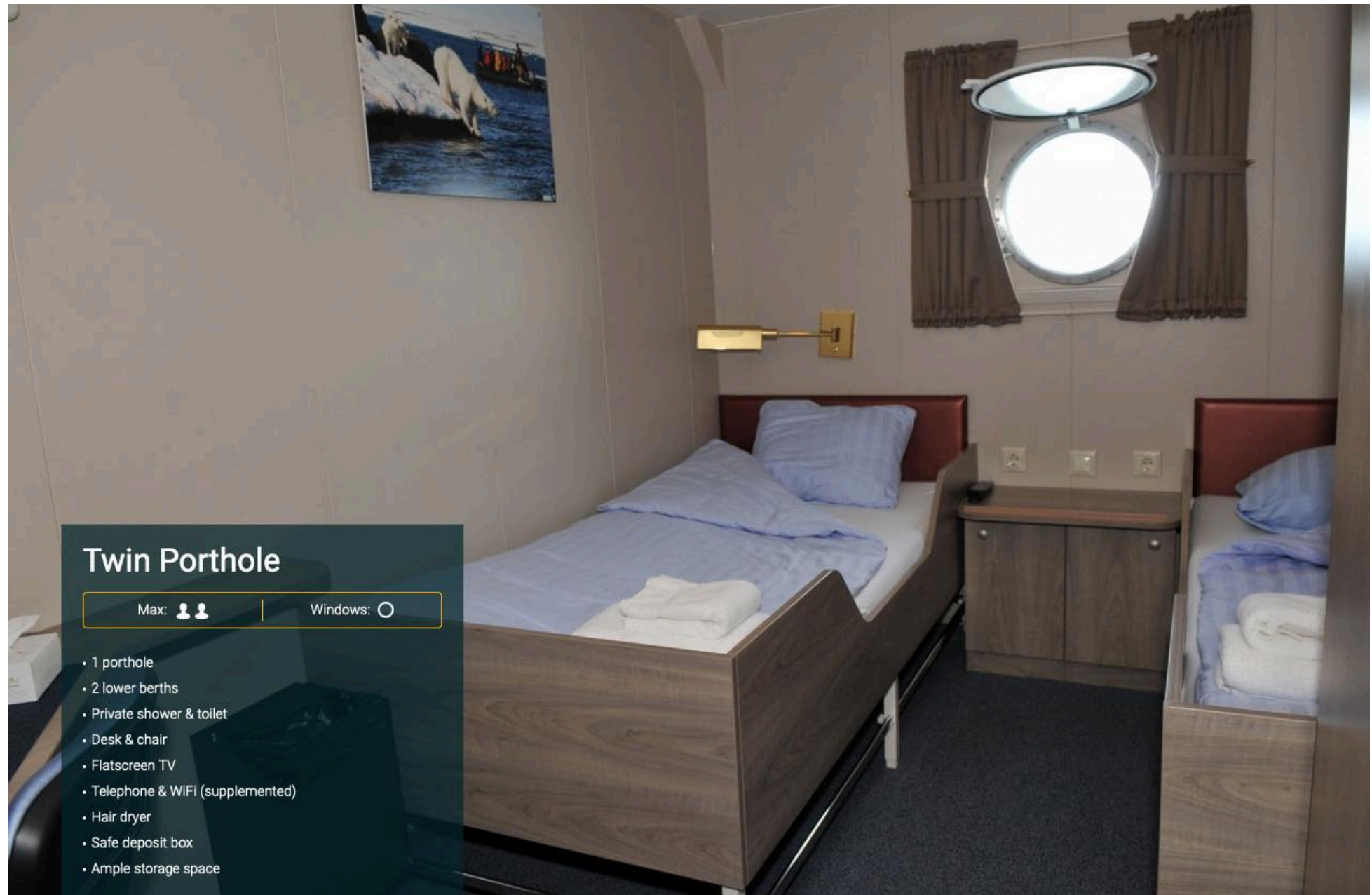
Quadruple Porthole

Max: 

Windows: 


- 1 porthole
- 2 upper & lower berths
- Private shower & toilet
- Desk & chair
- Flatscreen TV
- Telephone & WiFi (supplemented)
- Hair dryer
- Ample storage space
- Safe deposit box
- This cabin is suitable for families traveling with children, or passengers who do not require a twin or more luxurious cabin





Twin Porthole

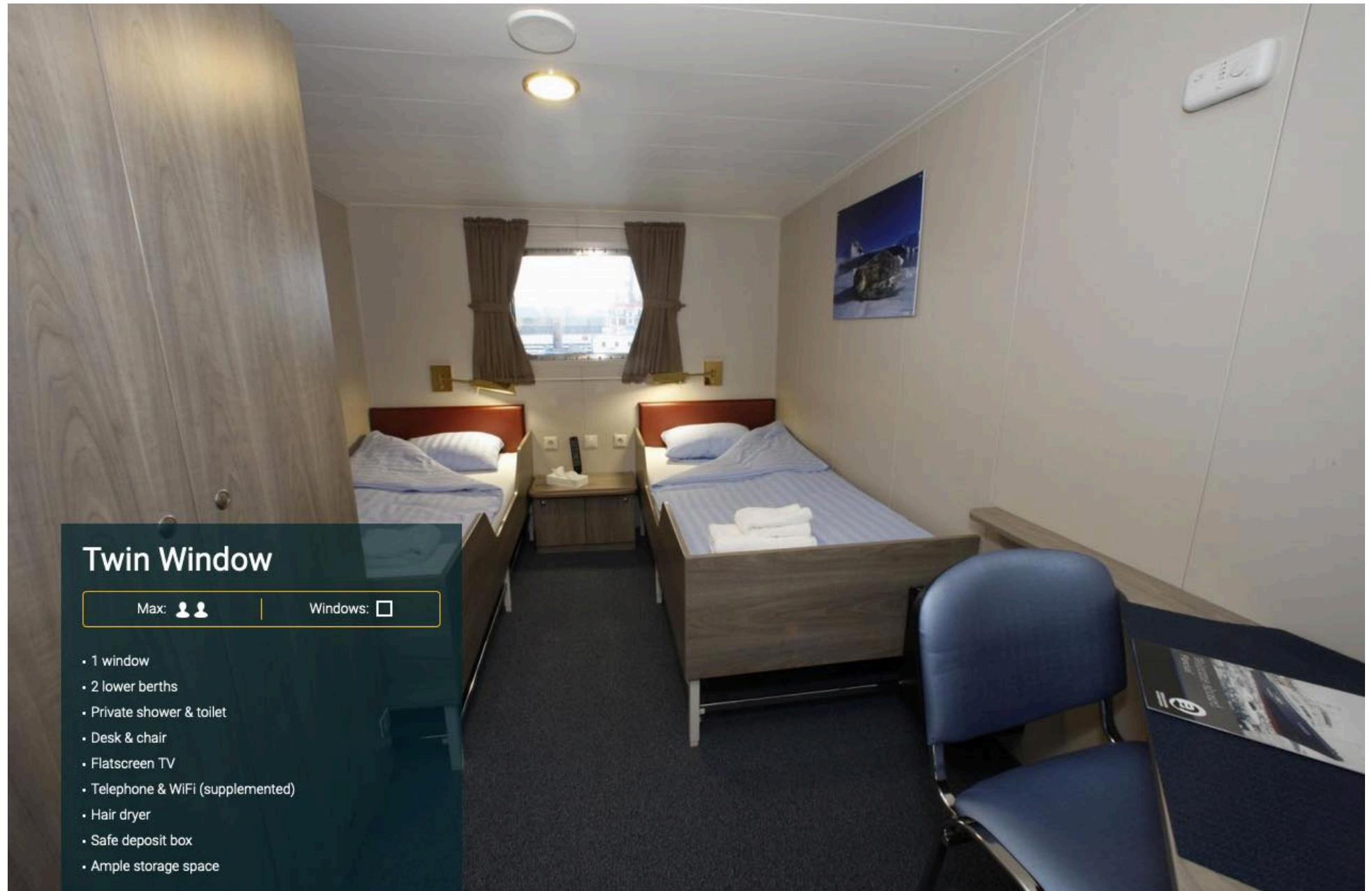
Max: 

Windows: 

- 1 porthole
- 2 lower berths
- Private shower & toilet
- Desk & chair
- Flatscreen TV
- Telephone & WiFi (supplemented)
- Hair dryer
- Safe deposit box
- Ample storage space



M/V PLACIUS - CABINS



Twin Window

Max: 

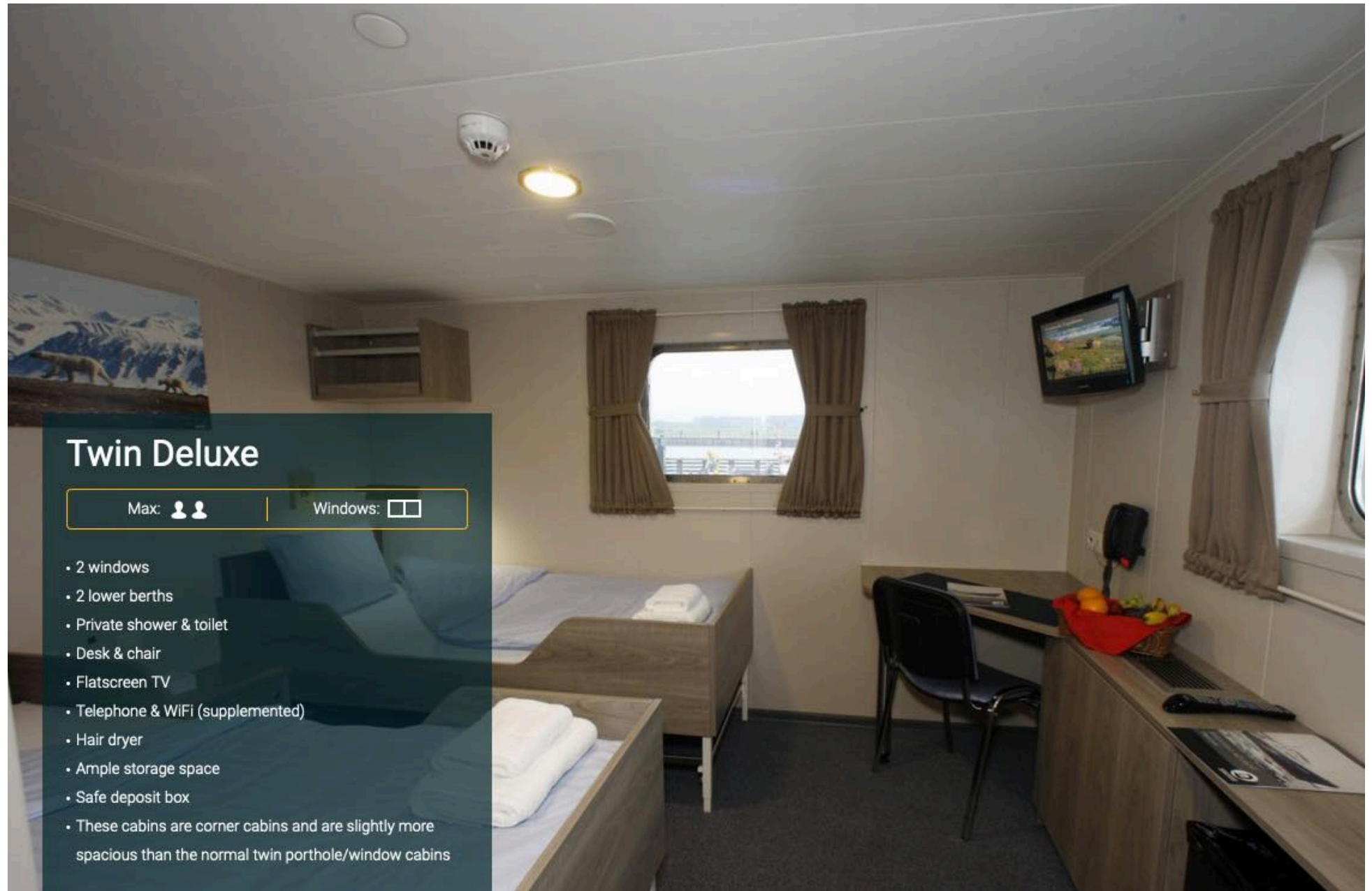
Windows:

- 1 window
- 2 lower berths
- Private shower & toilet
- Desk & chair
- Flatscreen TV
- Telephone & WiFi (supplemented)
- Hair dryer
- Safe deposit box
- Ample storage space



THELATINAMERICATRAVELCOMPANY.COM | Email: info@thelatinamericatraveltravelcompany.com
UK ☎: +44 (0) 20 8191 7772 | Part of HeadsEast Ltd - UK business registration: 6717612





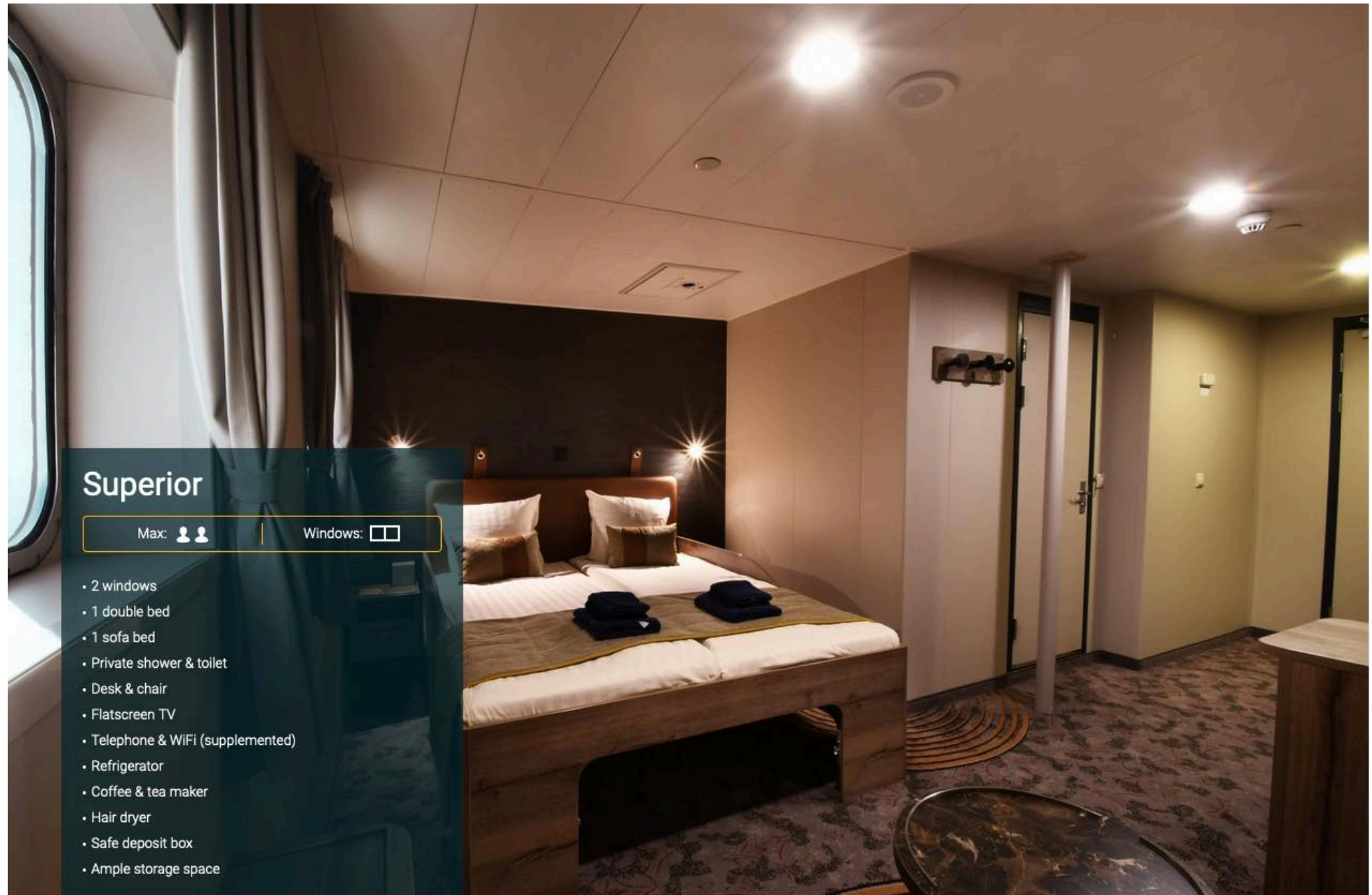
Twin Deluxe

Max: 

Windows: 


- 2 windows
- 2 lower berths
- Private shower & toilet
- Desk & chair
- Flatscreen TV
- Telephone & WiFi (supplemented)
- Hair dryer
- Ample storage space
- Safe deposit box
- These cabins are corner cabins and are slightly more spacious than the normal twin porthole/window cabins





Superior

Max: 

Windows: 

- 2 windows
- 1 double bed
- 1 sofa bed
- Private shower & toilet
- Desk & chair
- Flatscreen TV
- Telephone & WiFi (supplemented)
- Refrigerator
- Coffee & tea maker
- Hair dryer
- Safe deposit box
- Ample storage space



M/V PLANCIUS - USEFUL INFORMATION

Perfect for any expedition

M/v "Plancius" accommodates 108 passengers with private toilet and shower in 4 quadruple porthole cabins, 9 twin porthole cabins, 25 twin cabins with window and 2 twin deluxe cabins, all (ca. 12,5 square meters) and 10 twin superior cabins (ca. 21 square meters). All cabins offer lower berths (one queen-size bed in the superior cabins and two single beds in the twin cabins), except for the 4 quadruple cabins (for 4 persons in 2x upper and lower beds).

Plancius: a vessel with comfort and character

Please be aware that a small number of cabins may have a partially obstructed view due to the design requirements of the ship. The best view is always on the outer deck or the bridge. The vessel offers a restaurant/lecture room on deck 3 and a spacious observation lounge (with bar) on deck 5 with large windows, offering full panorama view. M/v "Plancius" has large open deck spaces (with full walk-around possibilities on deck 4), giving excellent opportunities to enjoy the scenery and wildlife. She is furthermore equipped with 10 Mark V zodiacs, including 40 HP 4-stroke outboard engines and 2 gangways on the starboard side, guaranteeing a swift zodiac operation. M/v "Plancius" is comfortable and nicely decorated, but is not a luxury vessel. Our voyages in the Arctic and Antarctic regions are primarily defined by an exploratory educational travel programme, spending as much time ashore as possible. Plancius fully meets our demands to achieve this. The vessel is equipped with a diesel-electric propulsion system which reduces the noise and vibration of the vessel considerably. The 3 diesel engines generate 1.230 horse-power each, giving the vessel a speed of 10 - 12 knots. The vessel is ice-strengthened and was specially built for oceanographic voyages. M/v "Plancius" is manned by an international crew of 37 (18 nautical crew and 19 hotel crew), 8 expedition staff (1 expedition leader, 1 assistant expedition leader and 6 guides/lecturers), and 1 doctor.

Age and Nationality

Passengers on a typical voyage range from their 30s to their 80s - with a majority usually from 45 - 65. Our expeditions attract independent-minded travellers from around the world. They are characterised by a strong interest in exploring remote regions. The camaraderie and spirit that develops aboard is an important part of the expedition experience. Many departures have several nationalities on board.

Dress code

In keeping with our expeditions atmosphere, dress on board is informal. Bring casual and comfortable clothing for all activities. Keep in mind that much of the spectacular scenery can be appreciated from deck, which can be slippery. Bring sturdy shoes with no-slip soles and make sure the parka is never far away in case of the call "Whales!" comes over the loudspeaker and you have to dash outside. Wear layers since it is comfortably warm aboard the ship - and often cold on deck.

Currency & payment

Refreshments from the bar and souvenirs will be charged to your cabin. The day before departure you can settle your bill with the Hotel Manager and pay by credit card (Visa or MasterCard) or cash (Euro or Dollar). We do not accept cheques of any kind. The prices and standard currency on board our vessels is the Euro. Other currencies may be accepted at the discretion of the hotel manager at prevailing rates.

Electric current

The electrical supply aboard the ship is 220v, 60Hz. Electrical outlets are standard European with two thick round pins. You may need a 220v/110v converter.



Gratuities

The customary gratuity to the ship's service personnel is made as a blanket contribution at the end of the voyage which is divided among the crew. Tipping is a very personal matter and the amount you wish to give is at your discretion. As a generally accepted guideline, we suggest US\$8 to US\$10 per person per day. It is better for the crew, if you can give them cash US Dollar.

Non-smoking policy

On board our vessels we have a non-smoking policy. It is prohibited to smoke inside the ship. You can smoke in the designated smoking areas. Please respect the wishes of non-smokers.

Your physical condition

You must be in good general health and you should be able to walk several hours per day. The expedition is ship-based and physically not very demanding. Although we spend as much time as possible ashore, you are welcome to remain aboard the ship if you like. To join most excursions, you must be able to get up and down the steep gangway from the ship to the water level to board the Zodiacs. Staff will assist you in and out of the boats. This will become progressively easier with practice. Ashore it can be slippery and rocky. You are travelling in remote areas without access to sophisticated medical facilities, so you must not join this expedition if you have a life-threatening condition, or need daily medical treatment.



M/V PLANGIUS - FACILITIES

LECTURE THEATRE

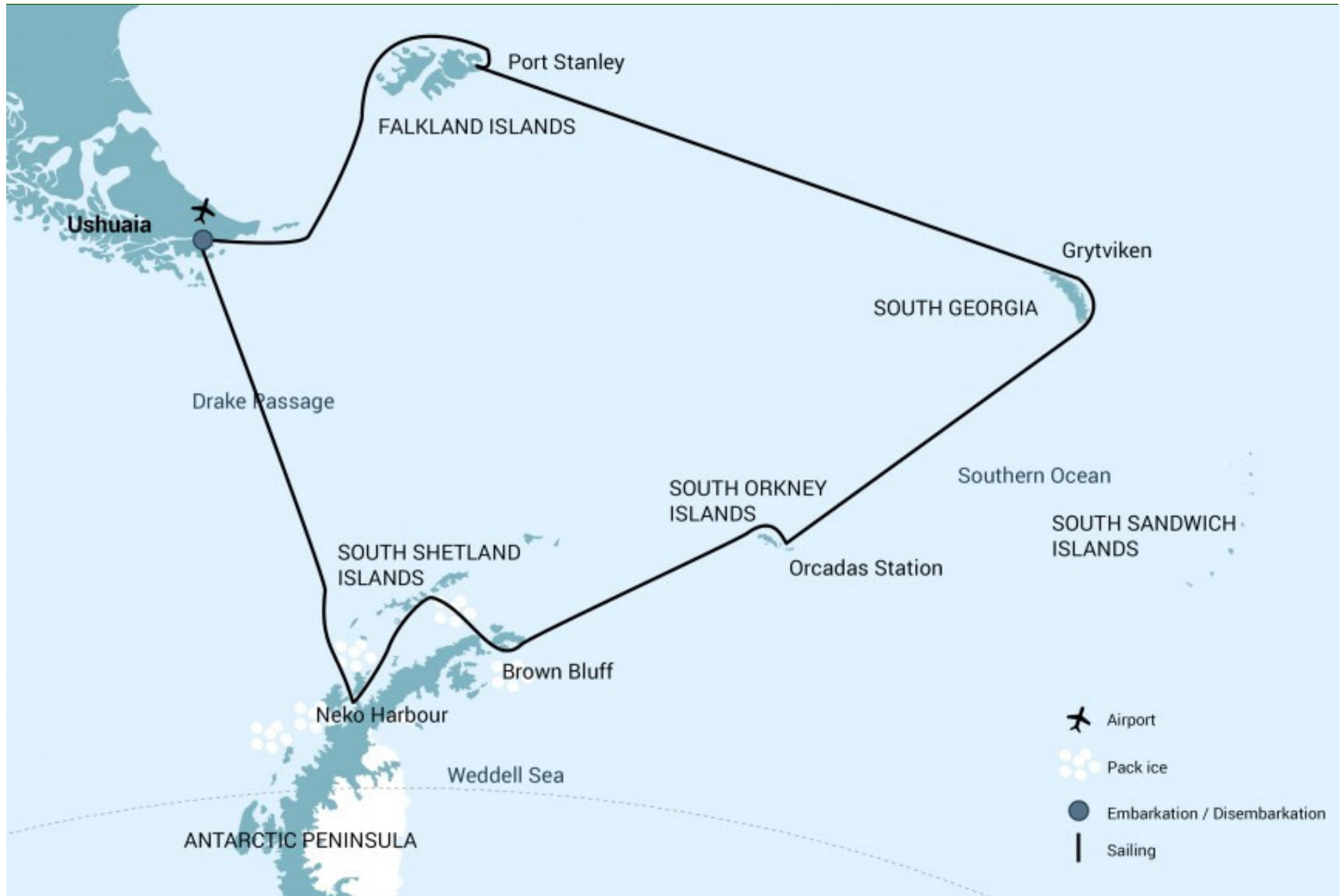


BAR LOUNGE



DINING





YOUR DETAILED DAY BY DAY ITINERARY

DAY 1

23rd NOVEMBER 2023

JOIN SHIP

END OF THE WORLD, START OF YOUR ADVENTURE

Your voyage begins where the world drops off. Ushuaia, Argentina, reputed to be the southernmost city on the planet, is located on the far southern tip of South America. Starting in the afternoon, you embark from this small resort town on Tierra del Fuego, nicknamed “The End of the World,” and sail the mountain-fringed Beagle Channel for the remainder of the evening.

IMPORTANT NOTE: All itineraries are for guidance only. Programs may vary depending on ice, weather, and wildlife conditions. Landings are subject to site availabilities, permissions, and environmental concerns per IAATO regulations. Official sailing plans and landing slots are scheduled with IAATO prior to the start of the season, but the expedition leader determines the final plan. Flexibility is paramount for expedition cruises. The average cruising speed for our vessel is 10.5 knots.

 **Meals Included:** Dinner.

OVERNIGHT

M/V PLACIUS



The ice-strengthened vessel Placius is an ideal vessel for polar expedition cruises in the Arctic and Antarctic and offers mid-range comfort.

[CLICK HERE TO LEARN MORE](#)



Photos for guidance only & not necessarily the room booked



YOUR DETAILED DAY BY DAY ITINERARY

DAY 2

24th NOVEMBER 2023

AT SEA

THE WINGED LIFE OF THE WESTERLIES OUT AT SEA

Several species of albatross follow the vessel into the westerlies, along with storm petrels, shearwaters, and diving petrels.

 **Meals Included:** Breakfast, Lunch & Dinner.

OVERNIGHT

M/V PLACIUS



The ice-strengthened vessel Placius is an ideal vessel for polar expedition cruises in the Arctic and Antarctic and offers mid-range comfort.

[CLICK HERE TO LEARN MORE](#)



Photos for guidance only & not necessarily the room booked





YOUR DETAILED DAY BY DAY ITINERARY

DAY 3

25th NOVEMBER 2023

FALKLAND ISLANDS

ARRIVAL IN THE FALKLANDS ISLANDS FOR TWO DAYS

The Falkland Islands offer an abundance of wildlife that is easily approachable, though caution is always advised. These islands are largely unknown gems, the site of a 1982 war between the UK and Argentina. Not only do various species of bird live here, but chances are great you'll see both Peale's dolphins and Commerson's dolphins in the surrounding waters.

During this segment of the voyage, you may visit the following sites:

Carcass Island: Despite its name, this island is pleasantly rodent-free and hence bounteous with birdlife and many endemic species. Anything from breeding Magellanic penguins and gentoos to numerous waders and passerine birds (including Cobb's wrens and tussock-birds) live here.

Saunders Island: On Saunders Island you can see the black-browed albatross and its sometimes-clumsy landings, along with breeding imperial shags and rockhopper penguins. King penguins, Magellanic penguins, and gentoos are also found here.

 **Meals Included:** Breakfast, Lunch & Dinner.

OVERNIGHT

M/V PLACIUS



The ice-strengthened vessel Placius is an ideal vessel for polar expedition cruises in the Arctic and Antarctic and offers mid-range comfort.

[CLICK HERE TO LEARN MORE](#)



Photos for guidance only & not necessarily the room booked



YOUR DETAILED DAY BY DAY ITINERARY

DAY 4

26th NOVEMBER 2023

FALKLAND ISLANDS

PORT STANLEY - THE SEAT OF FALKLANDS CULTURE

The capital of the Falklands and centre of its culture, Port Stanley has some Victorian-era charm: colourful houses, well-tended gardens, and English-style pubs are all to be found here. You can also see several century-old clipper ships nearby, silent witnesses to the hardships of 19th century sailors. The small but interesting museum is also worth a visit, covering the early days of settlement up to the Falklands War.

Approximately 2,100 people live in Port Stanley. Admission to the museum is included.

 **Meals Included:** Breakfast, Lunch & Dinner.

OVERNIGHT

M/V PLACIUS



The ice-strengthened vessel Placius is an ideal vessel for polar expedition cruises in the Arctic and Antarctic and offers mid-range comfort.

[CLICK HERE TO LEARN MORE](#)



Photos for guidance only & not necessarily the room booked





YOUR DETAILED DAY BY DAY ITINERARY

DAY 5 & 6

27th & 28th NOVEMBER 2023

AT SEA

ONCE MORE TO THE SEA TOWARDS SOUTH GEORGIA

En route to South Georgia, you now cross the Antarctic Convergence. The temperature cools considerably within the space of a few hours, and nutritious water rises to the surface of the sea due to colliding water columns. This phenomenon attracts a multitude of seabirds near the ship, including several species of albatross, shearwaters, petrels, prions, and skuas.

 **Meals Included:** Breakfast, Lunch & Dinner.

OVERNIGHT

M/V PLACIUS



The ice-strengthened vessel Placius is an ideal vessel for polar expedition cruises in the Arctic and Antarctic and offers mid-range comfort.

[CLICK HERE TO LEARN MORE](#)



Photos for guidance only & not necessarily the room booked



THELATINAMERICATRAVELCOMPANY.COM | Email: info@thelatinamericatraveltravelcompany.com
UK ☎: +44 (0) 20 8191 7772 | Part of HeadsEast Ltd - UK business registration: 6717612



DAY 7

29th NOVEMBER 2023

SOUTH GEORGIA

ARRIVAL IN SOUTH GEORGIA JOURNEY FOR 4 DAYS

Today you arrive at the first South Georgia activity site. Please keep in mind that weather conditions in this area can be challenging, largely dictating the program.

Over the next several days, you have a chance to visit the following sites:

Prion Island – This location is closed during the early part of the wandering albatross breeding season (November 20 – January 7). From January on, the breeding adults have found their partners and are sitting on eggs or nursing their chicks. Enjoy witnessing the gentle nature of these animals, which possess the largest wingspan of any bird in the world.

Fortuna Bay – A beautiful outwash plain from Fortuna Glacier is home to a large number of king penguins and seals. Here you may also have the chance to follow the final leg of Shackleton’s route to the abandoned whaling village of Stromness. This path cuts across the mountain pass beyond Shackleton’s Waterfall, and as the terrain is partly swampy, be prepared to cross a few small streams.

 **Meals Included:** Breakfast, Lunch & Dinner.

OVERNIGHT

M/V PLACIUS



The ice-strengthened vessel Placius is an ideal vessel for polar expedition cruises in the Arctic and Antarctic and offers mid-range comfort.

[CLICK HERE TO LEARN MORE](#)



Photos for guidance only & not necessarily the room booked



ANTARCTICA CRUISING



THELATINAMERICATRAVELCOMPANY.COM | Email: info@thelatinamericatraveltravelcompany.com
UK ☎: +44 (0) 20 8191 7772 | Part of HeadsEast Ltd - UK business registration: 6717612



YOUR DETAILED DAY BY DAY ITINERARY

DAY 8 - 10

30th NOV - 2nd DEC 2023

SOUTH GEORGIA

CONTINUE TO EXPLORE SOUTH GEORGIA

Salisbury Plain, St. Andrews Bay, Gold Harbour – These sites not only house the three largest king penguin colonies in South Georgia, they're also three of the world's largest breeding beaches for Antarctic fur seals. Literally millions breed on South Georgia during December and January. Only during the mid-season do they peak in their breeding cycle. There will be some young adult Elephant seals as well as this seasons 'Weaner's; the young Elephant Seals that have been left to fend for themselves.

Watch your step and stay cool when walking the beaches during this time.

Grytviken – In this abandoned whaling station, king penguins walk the streets and elephant seals lie around like they own the place – because they basically do. Here you might be able to see the South Georgia Museum as well as Shackleton's grave.

In the afternoon of day 10 and depending on the conditions, we will start sailing southwards in the direction of the South Orkney Islands.

 **Meals Included:** Breakfast, Lunch & Dinner.

OVERNIGHT

M/V PLACIUS



The ice-strengthened vessel Placius is an ideal vessel for polar expedition cruises in the Arctic and Antarctic and offers mid-range comfort.

[CLICK HERE TO LEARN MORE](#)



Photos for guidance only & not necessarily the room booked



THELATINAMERICATRAVELCOMPANY.COM | Email: info@thelatinamericatraveltravelcompany.com
UK ☎: +44 (0) 20 8191 7772 | Part of HeadsEast Ltd - UK business registration: 6717612



YOUR DETAILED DAY BY DAY ITINERARY

DAY 11

3rd DECEMBER 2023

 **AT SEA**

SOUTHWARD BOUND TOWARDS THE ANTARCTIC PENINSULA

There may be sea ice on this route, and at the edge of the ice some south polar skuas and snow petrels could join the other seabirds trailing the vessel south.

 **Meals Included:** Breakfast, Lunch & Dinner.

DAY 12

4th DECEMBER 2023

 **AT SEA**

THE SCENIC VISTAS OF THE SOUTH ORKNEY ISLANDS

Depending on the conditions, you might visit Orcadas Base, an Argentine scientific station on Laurie Island in the South Orkney archipelago. The personnel here will happily show you their facility, where you can enjoy expansive views of the surrounding glaciers. If a visit isn't possible, you may instead land in Coronation Island's Shingle Cove.

 **Meals Included:** Breakfast, Lunch & Dinner.

OVERNIGHT

M/V PLACIUS



The ice-strengthened vessel Placius is an ideal vessel for polar expedition cruises in the Arctic and Antarctic and offers mid-range comfort.

[CLICK HERE TO LEARN MORE](#)



Photos for guidance only & not necessarily the room booked



THELATINAMERICATRAVELCOMPANY.COM | Email: info@thelatinamericatraveltravelcompany.com
UK ☎: +44 (0) 20 8191 7772 | Part of HeadsEast Ltd - UK business registration: 6717612



YOUR DETAILED DAY BY DAY ITINERARY

DAY 13

5th DECEMBER 2023

SOUTH ORKNEY

LAST PUSH ACROSS THE SEA TO THE ANTARCTIC

Enormous icebergs and a fair chance of fin whale sightings ensure there's never a dull moment on this last sea voyage south. Also, your best chance to spot Antarctic petrels is here.

 **Meals Included:** Breakfast, Lunch & Dinner.



OVERNIGHT

M/V PLACIUS



The ice-strengthened vessel Placius is an ideal vessel for polar expedition cruises in the Arctic and Antarctic and offers mid-range comfort.

[CLICK HERE TO LEARN MORE](#)



Photos for guidance only & not necessarily the room booked



THELATINAMERICATRAVELCOMPANY.COM | Email: info@thelatinamericatraveltravelcompany.com
UK ☎: +44 (0) 20 8191 7772 | Part of HeadsEast Ltd - UK business registration: 6717612





YOUR DETAILED DAY BY DAY ITINERARY

DAY 14 - 16

6th - 8th DECEMBER 2023

ANTARCTICA

THREE DAYS EXPLORING THE AWE-INSPIRING ANTARCTIC PENINSULA

If the ice conditions permit, you now sail into the Weddell Sea. Here colossal tabular icebergs herald your arrival to the eastern side of the Antarctic Peninsula. Paulet Island, with its large population of Adélie penguins, is a possible stop. You might also visit Brown Bluff, located in the ice-clogged Antarctic Sound, where you could get the chance to set foot on the Antarctic Continent itself.

If conditions aren't favourable to enter the Weddell Sea from the east, the ship will set course for Elephant Island and head into the Bransfield Strait, between the South Shetland Islands and the Antarctic Peninsula. Here you can attempt to access the Antarctic Sound from the northwest.

The breathtaking scenery continues in the Bransfield Strait and, if conditions allow further South in the Gerlache Strait. Conditions on the Drake Passage determine the exact time of departure.

 **Meals Included:** Breakfast, Lunch & Dinner.

OVERNIGHT

M/V PLANCIUS



The ice-strengthened vessel Plancius is an ideal vessel for polar expedition cruises in the Arctic and Antarctic and offers mid-range comfort.

[CLICK HERE TO LEARN MORE](#)



Photos for guidance only & not necessarily the room booked



THELATINAMERICATRAVELCOMPANY.COM | Email: info@thelatinamericatraveltravelcompany.com
UK ☎: +44 (0) 20 8191 7772 | Part of HeadsEast Ltd - UK business registration: 6717612



YOUR DETAILED DAY BY DAY ITINERARY

DAY 17

9th DECEMBER 2023

AT SEA

HEAD BACK ACROSS THE DRAKE PASSAGE TO USHUAIA

Your return voyage across the Drake Passage is far from lonely. While crossing the Drake, you're again greeted by the vast array of seabirds remembered from the passage south. But they seem a little more familiar to you now, and you to them.

 **Meals Included:** Breakfast, Lunch & Dinner.



OVERNIGHT

M/V PLACIUS



The ice-strengthened vessel Placius is an ideal vessel for polar expedition cruises in the Arctic and Antarctic and offers mid-range comfort.

[CLICK HERE TO LEARN MORE](#)



Photos for guidance only & not necessarily the room booked



THELATINAMERICATRAVELCOMPANY.COM | Email: info@thelatinamericatraveltravelcompany.com
UK ☎: +44 (0) 20 8191 7772 | Part of HeadsEast Ltd - UK business registration: 6717612



YOUR DETAILED DAY BY DAY ITINERARY

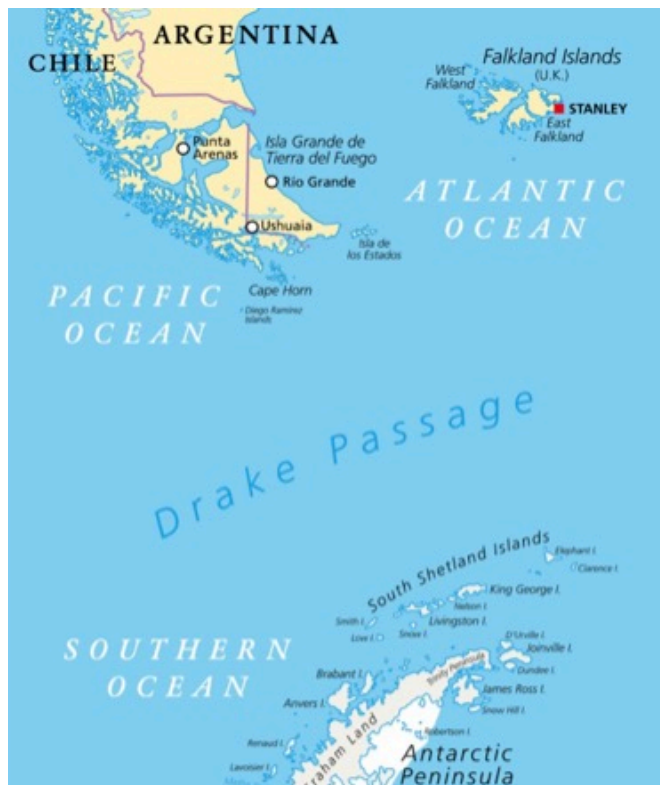
DAY 18

10th DECEMBER 2023

 **AT SEA**

LAST DAY ON THE DRAKE BEFORE ARRIVAL IN ARGENTINA TOMORROW

 **Meals Included:** Breakfast, Lunch & Dinner.



OVERNIGHT

M/V PLACIUS



The ice-strengthened vessel Placius is an ideal vessel for polar expedition cruises in the Arctic and Antarctic and offers mid-range comfort.

[CLICK HERE TO LEARN MORE](#)



Photos for guidance only & not necessarily the room booked



THELATINAMERICATRAVELCOMPANY.COM | Email: info@thelatinamericatraveltravelcompany.com
UK ☎: +44 (0) 20 8191 7772 | Part of HeadsEast Ltd - UK business registration: 6717612



DAY 19

11th DECEMBER 2023

USHUAIA

ARRIVAL BACK IN ARGENTINA

Every adventure, no matter how grand, must eventually come to an end. It's now time to disembark in Ushuaia, but with memories that will accompany you wherever your next adventure lies.

On arrival a transfer to your hotel with the rest of the day free to get used to dry land again!

 **Meals Included:** Breakfast.



LATC Founder Chris

"Antarctica is without doubt the most amazing trip I have made anywhere in the world and totally unique from every aspect and I will be going back to see more of the frozen continent on a regular basis. It is both a privilege and a responsibility to be able to send our clients."



antarctica
flora & fauna

INFOGRAPHIC

ANIMALS:

hourglass dolphin, weddell seal, crabeater seal, leopard seal, ross seal

SEA LIFE:

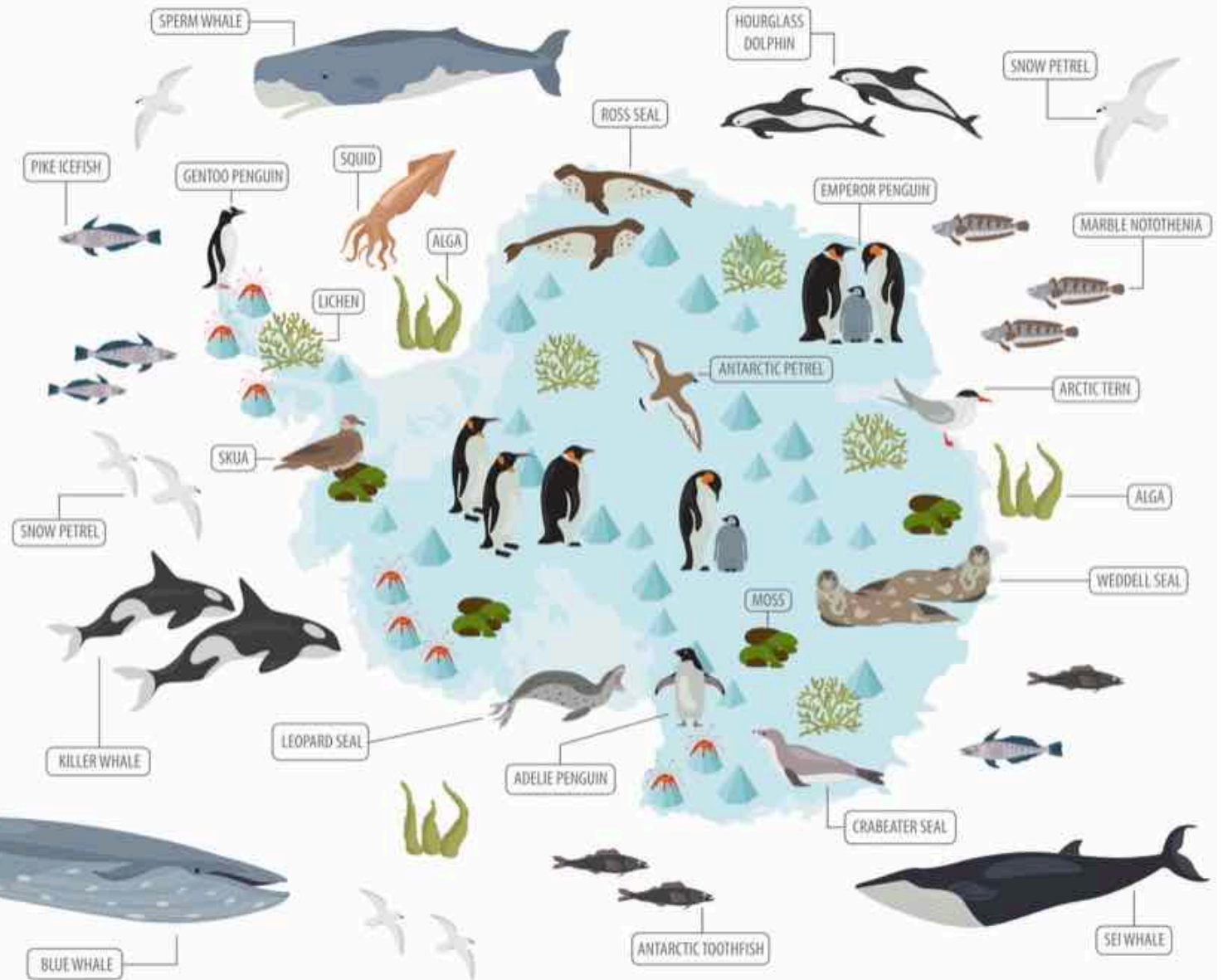
sperm whale, blue whale, killer whale, squid, sei whale, marble notothenia, antarctic toothfish, pike icefish

BIRDS:

emperor penguin, adelic penguin, gentoo penguin, antarctic petrel, snow petrel, skua, arctic tern

PLANTS:

lichen, moss, alga



TRIP CODE: PLA23-23: FALKLANDS, SOUTH GEORGIA & ANTARCTICA - START & FINISH DATES

Starts Ushuaia 23rd November 2023 and Finishes Ushuaia 11th December 2023 - Guided in: English

CABIN	EURO	GBP**	USD**
4 berth Quadruple Porthole - price per berth	€11,650	£10,485	US\$12,815
3 berth Triple Porthole - price per berth	€14,150	£12,735	US\$15,565
Twin Porthole - price per berth	€14,150	£12,735	US\$15,565
Twin Porthole - single occupancy	€24,055	£21,650	US\$26,461
Twin Window - price per berth	€14,850	£13,365	US\$16,335
Twin Window - single occupancy	€25,245	£22,721	US\$27,770
Twin Deluxe - price per berth	€15,800	£14,220	US\$17,380
Twin Deluxe - single occupancy	€26,860	£24,174	US\$29,546
Superior - price per person (only double bed)	€16,900	£15,210	US\$18,590
Superior - single occupancy	€28,730	£25,857	US\$31,603

NOTE: If you book a berth as a single person in a shared cabin the other occupants of the cabin will be of the same gender.

**** GBP and USD prices** are for guidance only and final price will be based on the exchange rate at time of booking.

IMPORTANT NOTE: All itineraries are for guidance only. Programs may vary depending on ice, weather, and wildlife conditions. Landings are subject to site availabilities, permissions, and environmental concerns per IAATO regulations. Official sailing plans and landing slots are scheduled with IAATO prior to the start of the season, but the expedition leader determines the final plan. Flexibility is paramount for expedition cruises. The average cruising speed for our vessel is 10.5 knots.



INCLUSIONS & EXCLUSIONS FOR THIS ITINERARY

■ ANTARCTIC CRUISE:

- ✓ 18 night / 19 Day Antarctic Cruise on the M/V Plancius - Cabin TBC.

Cruise Includes:

- ✓ Voyage aboard the indicated vessel as indicated in the itinerary
- ✓ All meals throughout the voyage aboard the ship including snacks, coffee and tea.
- ✓ All shore excursions and activities throughout the voyage by Zodiac.
- ✓ Program of lectures by noted naturalists and leadership by experienced expedition staff.
- ✓ Free use of rubber boots and snowshoes.
- ✓ Luggage transfer from pick-up point to the vessel on the day of embarkation, in Ushuaia.
- ✓ Pre-scheduled group transfer from the vessel to the airport in Ushuaia (directly after disembarkation).
- ✓ All miscellaneous service taxes and port charges throughout the programme.
- ✓ Comprehensive pre-departure material.

Cruise Excludes:

- ✓ Any airfare, whether on scheduled or charter flights
- ✓ Pre- and post- land arrangements.
- ✓ Passport and visa expenses.
- ✓ Government arrival and departure taxes.
- ✓ Meals ashore.
- ✓ Baggage, cancellation and personal insurance (which is strongly recommended).
- ✓ Excess baggage charges and all items of a personal nature such as laundry, bar, beverage charges and telecommunication charges.
- ✓ The customary gratuity at the end of the voyages for stewards and other service personnel aboard (guidelines will be provided).

Important Note: All itineraries are for guidance only. Programs may vary depending on ice, weather, and wildlife conditions. Landings are subject to site availabilities, permissions, and environmental concerns per IAATO regulations. Official sailing plans and landing slots are scheduled with IAATO prior to the start of the season, but the expedition leader determines the final plan. Flexibility is paramount for expedition cruises. The average cruising speed for our vessel is 10.5 knots.

