

# M/V PLANCIUS

## ANTARCTICA BASE CAMP

12 NIGHTS | TRIP CODE: PLA26-24

**4th - 16th JANUARY 2024**

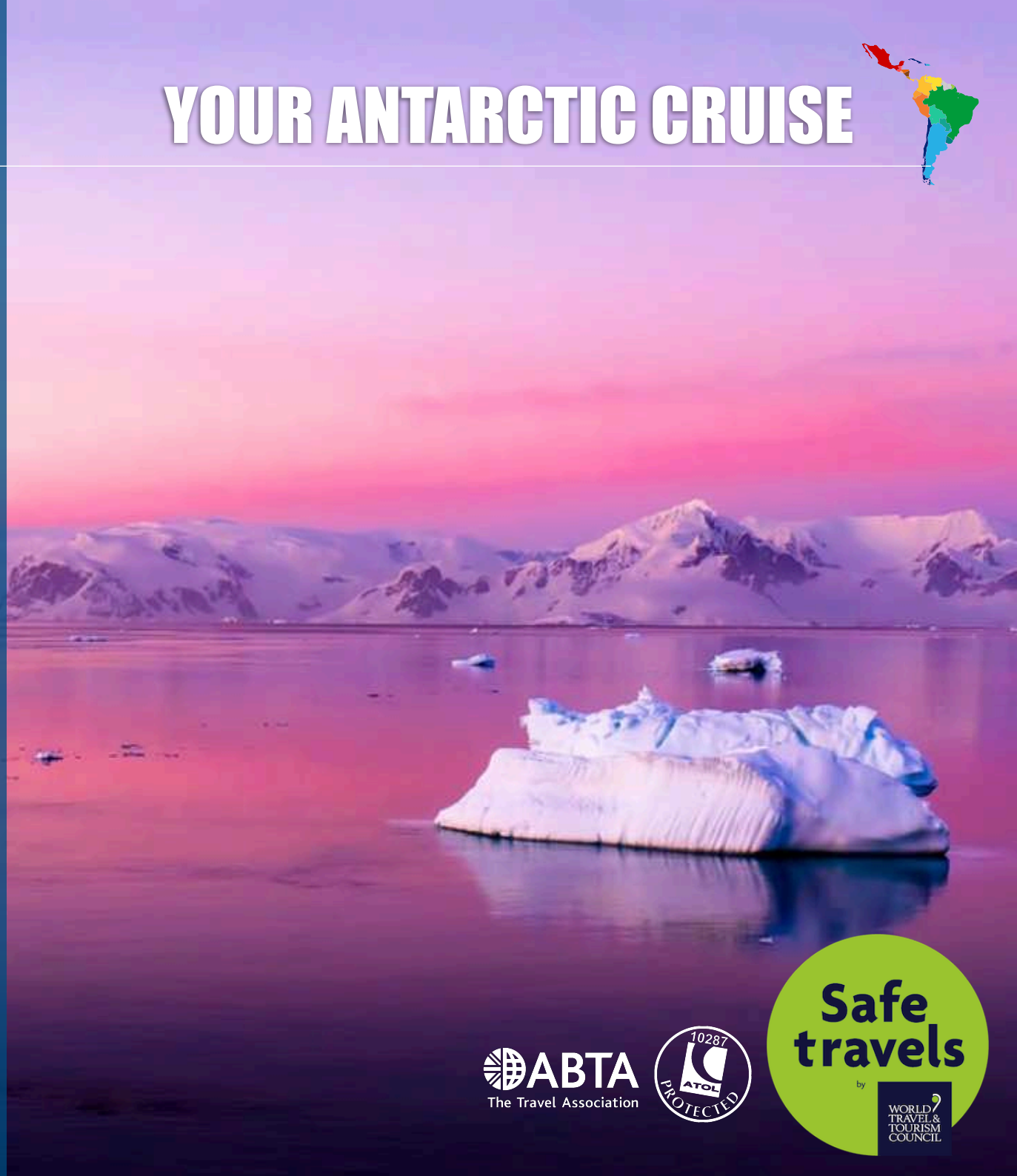
**USHUAIA - USHUAIA**

The Antarctic Peninsula Basecamp cruise offers you a myriad of ways to explore and enjoy the Antarctic Region. This expedition allows you to hike, snowshoe, kayak, go mountaineering, and even camp out under the Southern Polar skies.

### PLEASE NOTE:

All itineraries are for guidance only. Programs may vary depending on ice, weather, and wildlife conditions. Landings are subject to site availabilities, permissions, and environmental concerns per IAATO regulations. Official sailing plans and landing slots are scheduled with IAATO prior to the start of the season, but the expedition leader determines the final plan. Flexibility is paramount for expedition cruises. The average cruising speed for our vessel is 10.5 knots.

# YOUR ANTARCTIC CRUISE



**Safe  
travels**

by

WORLD  
TRAVEL &  
TOURISM  
COUNCIL

# M/V PLANCIUS - ABOUT THE SHIP

Plancius was built in 1976 as an oceanographic research vessel for the Royal Dutch Navy and was named Hr. Ms. Tydeman. The ship sailed for the Dutch Navy until June 2004 when it was purchased by Oceanwide Expeditions.

Plancius is a Dutch flagged completely rebuilt and converted passenger vessel complies with the latest SOLAS- regulations, classed by Lloyd's Register in London. The name Plancius is a tribute to the predecessor of Oceanwide Expeditions (Plancius Foundation, 1981-1996), the first cruise operator on a yearly base in Spitsbergen, offering voyages with a small cruise vessel named Plancius.

- Comfortable and nicely decorated, but not luxurious. It's made for explorers
- Spacious yet small ship character, comfort & style and modern technology
- Base camp for active, adventure and wildlife minded modern explorers
- Small ship operation: 108 passengers in 50 passenger cabins with private facilities (toilet, sink shower)
- 4 quadruple porthole cabins, 9 twin port- hole cabins, 25 twin cabins with window and 2 twin deluxe cabins, - all (ca. 15 m2), and 10 superior cabins ca. 21 m2)
- All cabins offer lower berths (either two single beds or one queen-size bed), except for the 4 quadruple cabins (2 bunk beds),
- Restaurant/lecture room (deck 3) and a spacious observation lounge (with bar, deck 5) with large windows offer full panorama view
- Large open deck spaces (with full walk-around possibilities on deck 4), giving excellent opportunities to enjoy the scenery and wildlife
- Equipped with 10 Mark V inflatable zodiacs, including 40 HP 4-stroke outboard engines
- 2 gangways on starboard side, that guarantees a swift zodiac operation
- The ship is manned by 17 nautical crew, 19 hotel staff (6 chefs, 1 hotel manager, 1 steward-barman and 11 stewards / cabin cleaners), 7 expedition staff in Antarctica (1 expedition leader and 6 guides lecturers), for the Arctic we will have 8 expedition staff (1 expedition leader and 7 guides/ lecturers) and 1 doctor.

## SPECIFICATIONS

**Registered:** The Netherlands

**Length:** 89 meters

**Breadth:** 14.5 meters

**Draft:** 5 meters

**Ice class:** 1D

**Displacement:** 3,211 tons

**Propulsion:** 3x Diesel-Electric

**Average cruising speed:** 10,5 knots

**Passengers:** 108 in 50 cabins

**Crew, guides, doctor:** 37 / 8 / 1

**Various decks refurbished 2009-2018-2019**

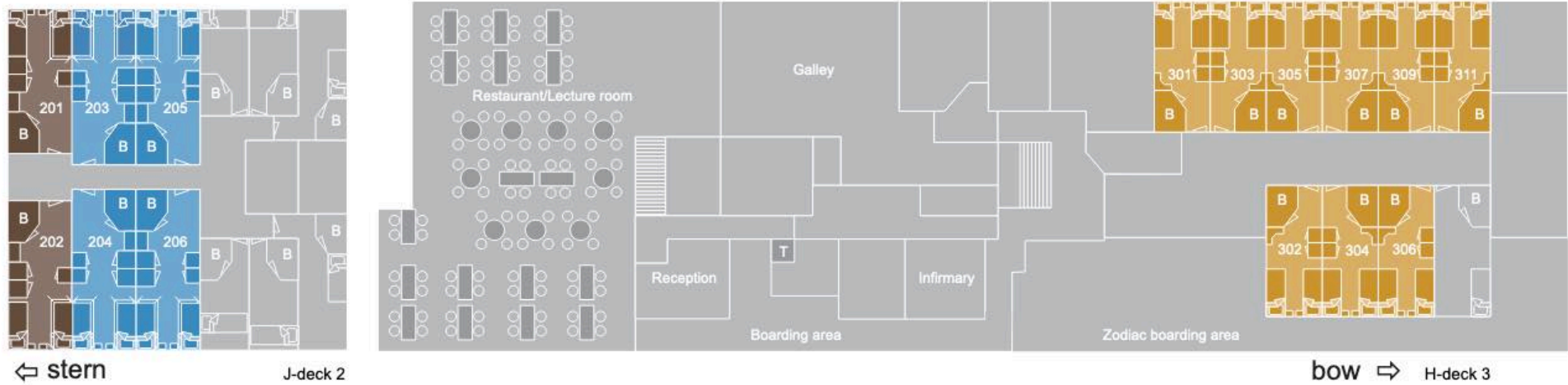


# M/V PLACIUS

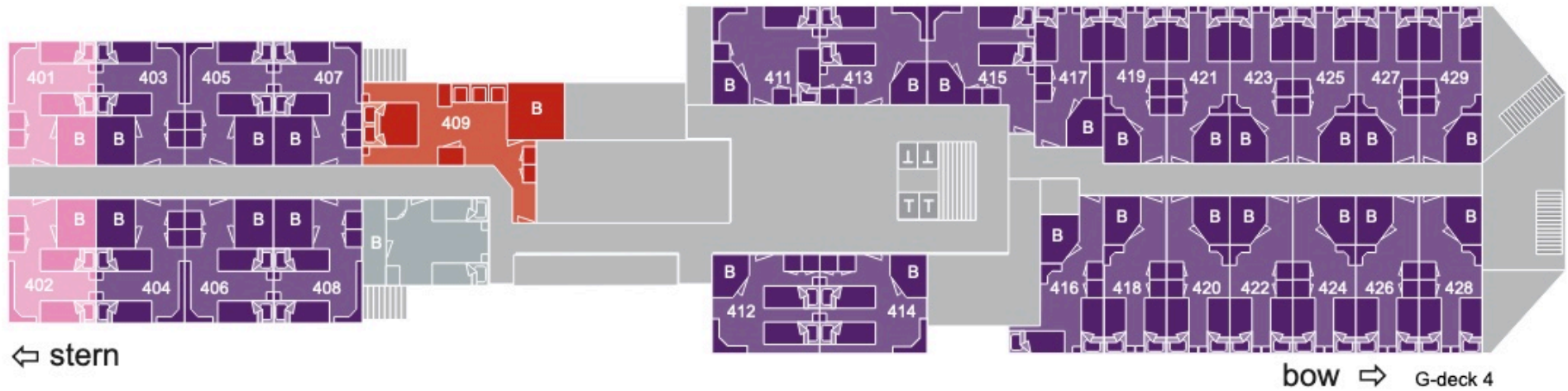


# M/V PLANGIUS - DECK PLANS

## DECK 2 & 3

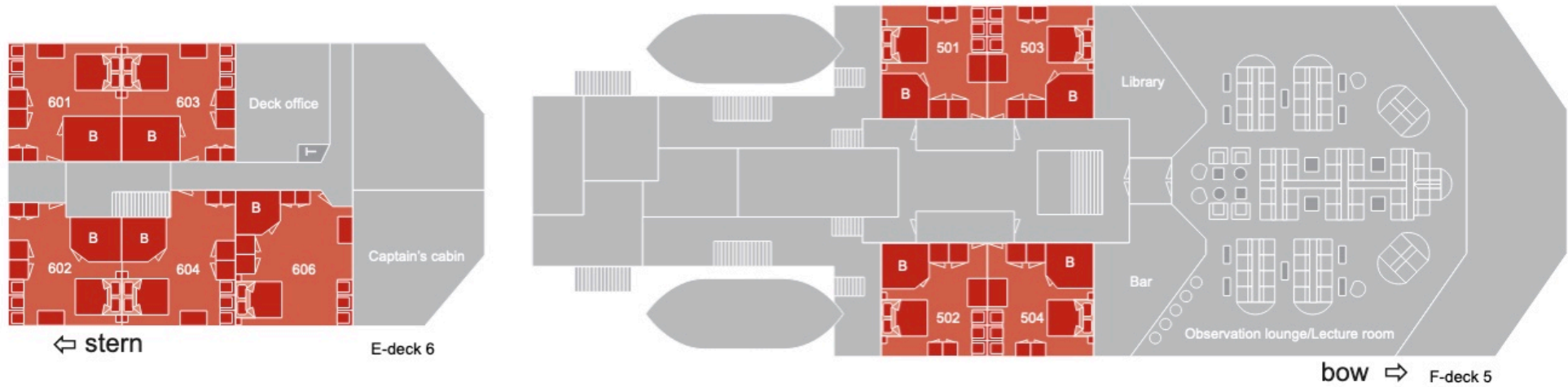


## DECK 4











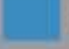


# M/V PLACIUS - DECK PLANS

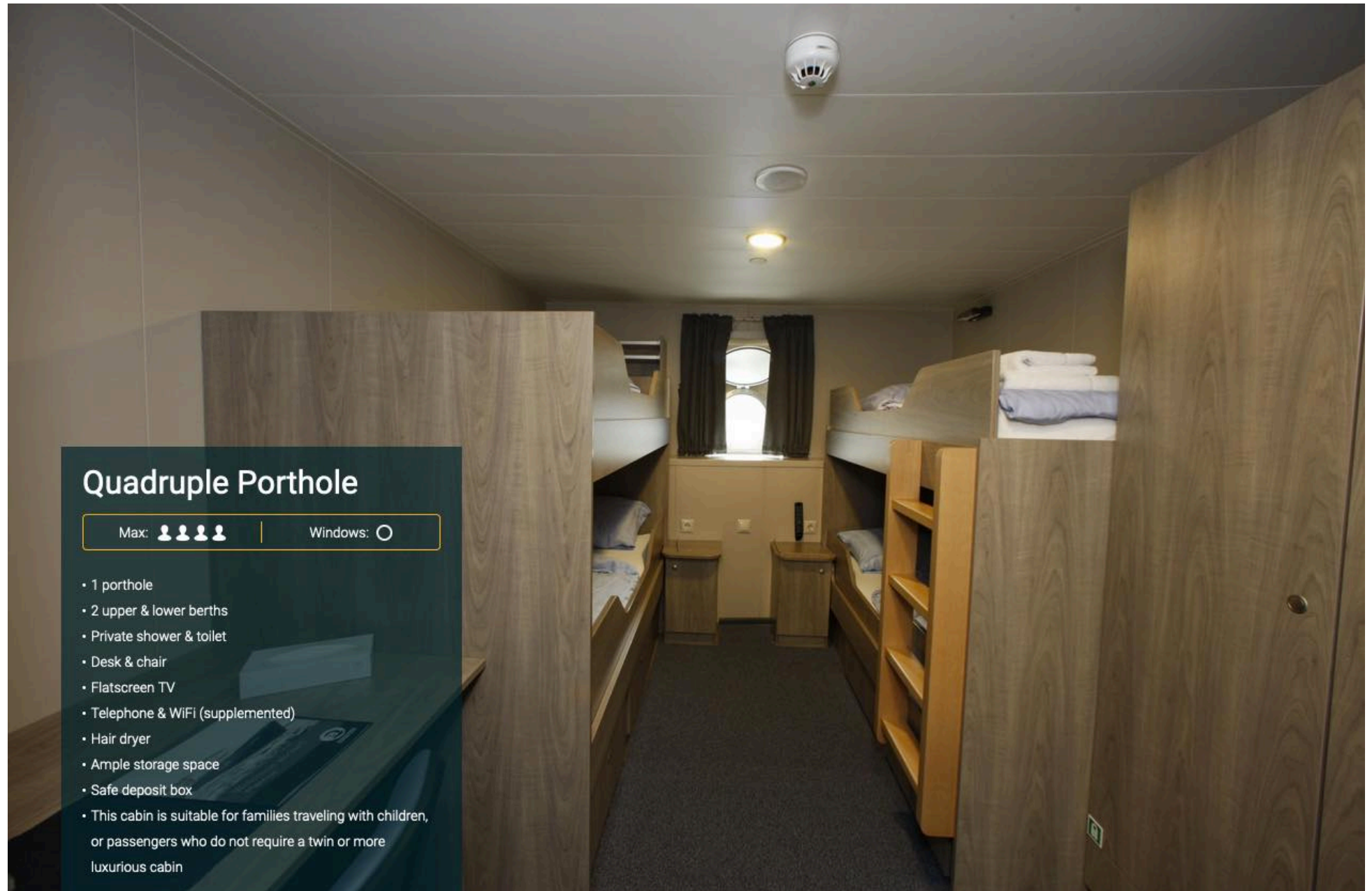
## DECK 5 & 6



## KEY


m/v Placius deckplan			
	Superior		lower berth
	Twin Deluxe		upper and lower berth
	Twin Window		double bed
	Twin Porthole		Toilet
	Twin Porthole plus additional third bed		Bathroom
	Quadruple Porthole		





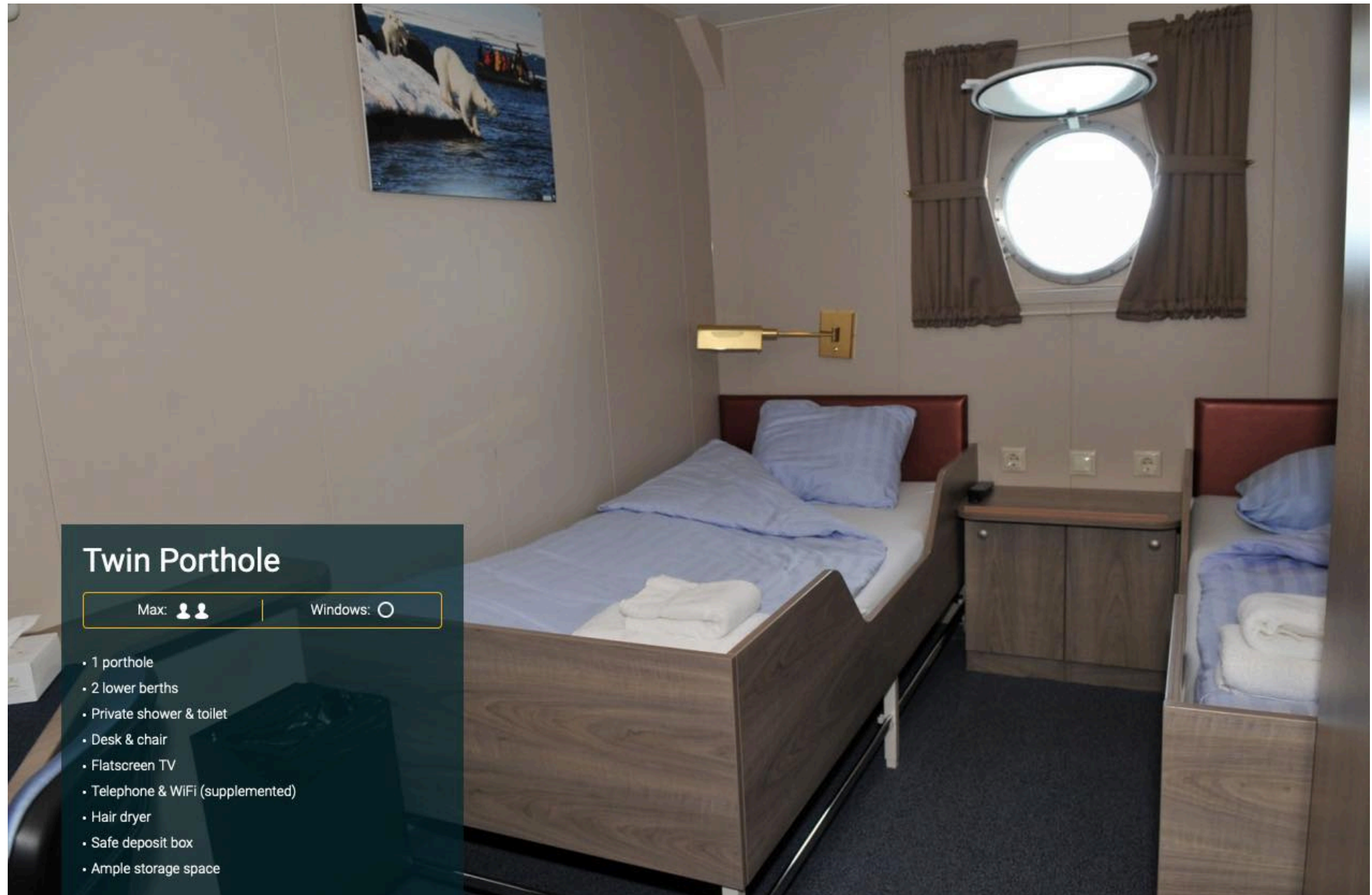
## Quadruple Porthole

Max: 

Windows: 


- 1 porthole
- 2 upper & lower berths
- Private shower & toilet
- Desk & chair
- Flatscreen TV
- Telephone & WiFi (supplemented)
- Hair dryer
- Ample storage space
- Safe deposit box
- This cabin is suitable for families traveling with children, or passengers who do not require a twin or more luxurious cabin





## Twin Porthole

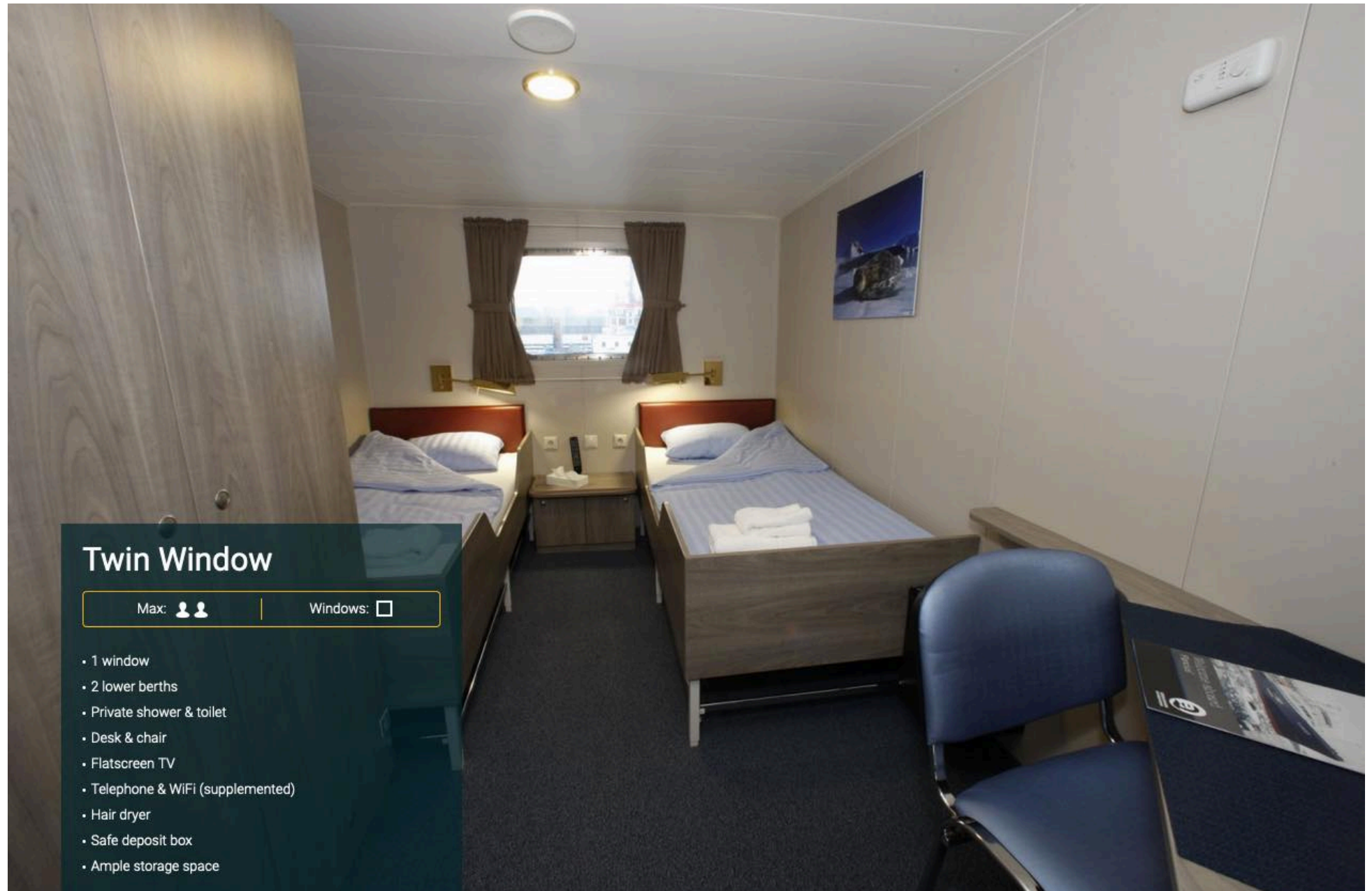
Max: 

Windows: 

- 1 porthole
- 2 lower berths
- Private shower & toilet
- Desk & chair
- Flatscreen TV
- Telephone & WiFi (supplemented)
- Hair dryer
- Safe deposit box
- Ample storage space



# M/V PLACIUS - CABINS



## Twin Window

Max: 

Windows:

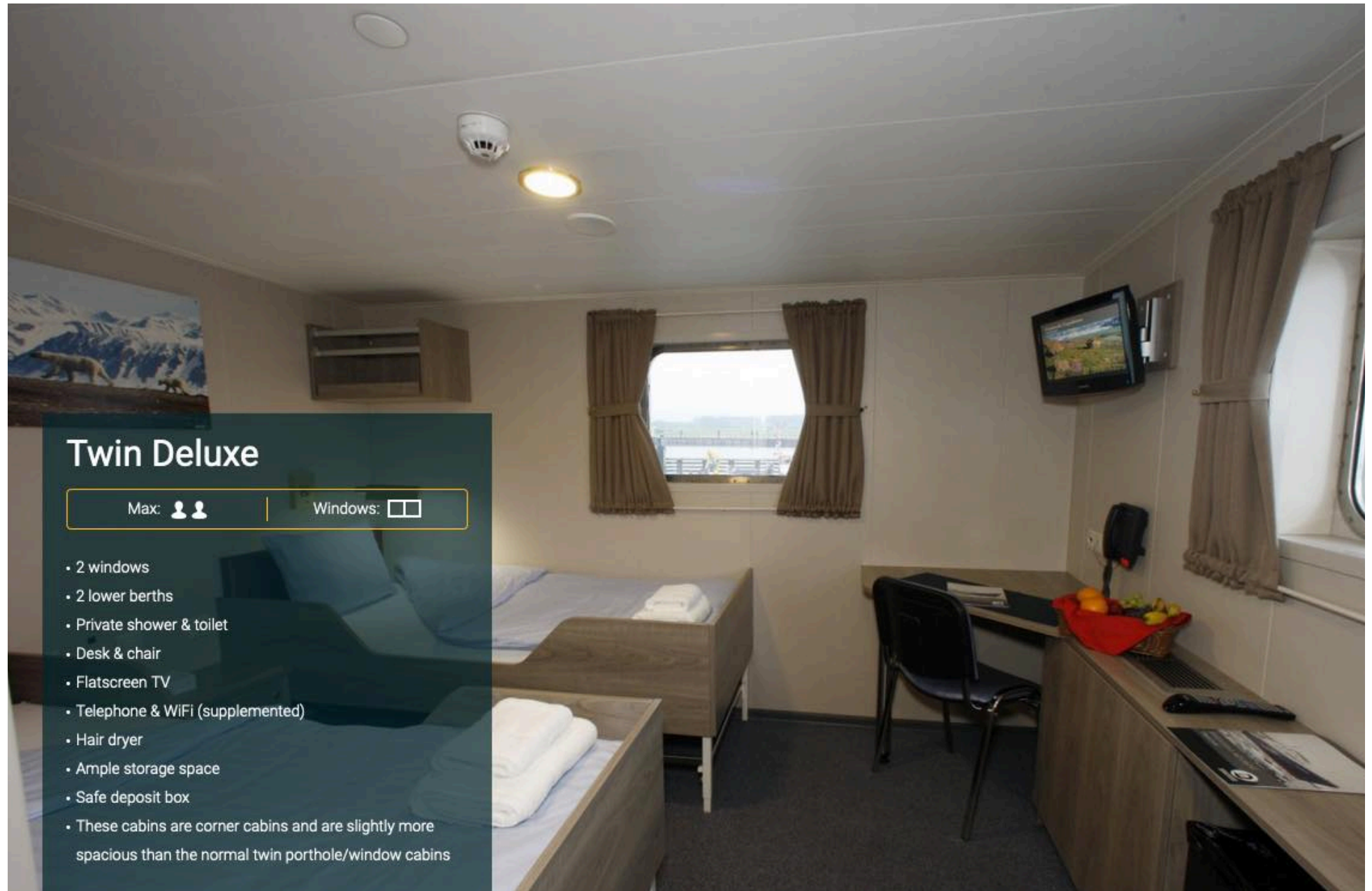
- 1 window
- 2 lower berths
- Private shower & toilet
- Desk & chair
- Flatscreen TV
- Telephone & WiFi (supplemented)
- Hair dryer
- Safe deposit box
- Ample storage space



THELATINAMERICATRAVELCOMPANY.COM | Email: [info@thelatinamericatraveltravelcompany.com](mailto:info@thelatinamericatraveltravelcompany.com)  
UK ☎: +44 (0) 20 8191 7772 | Part of HeadsEast Ltd - UK business registration: 6717612







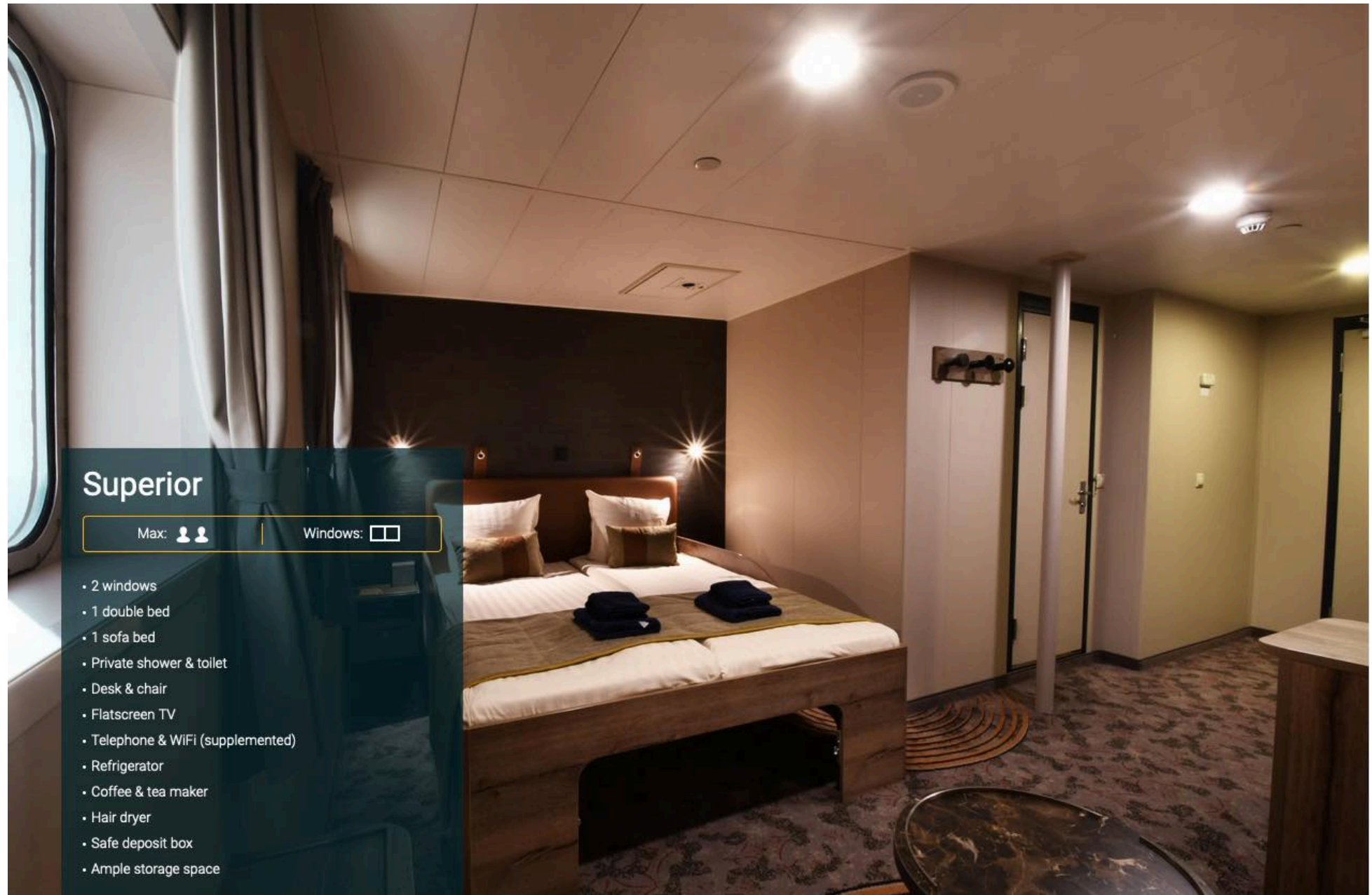
## Twin Deluxe

Max: 

Windows: 


- 2 windows
- 2 lower berths
- Private shower & toilet
- Desk & chair
- Flatscreen TV
- Telephone & WiFi (supplemented)
- Hair dryer
- Ample storage space
- Safe deposit box
- These cabins are corner cabins and are slightly more spacious than the normal twin porthole/window cabins





## Superior

Max: 

Windows: 

- 2 windows
- 1 double bed
- 1 sofa bed
- Private shower & toilet
- Desk & chair
- Flatscreen TV
- Telephone & WiFi (supplemented)
- Refrigerator
- Coffee & tea maker
- Hair dryer
- Safe deposit box
- Ample storage space



# M/V PLANCIUS - USEFUL INFORMATION

## Perfect for any expedition

M/v "Plancius" accommodates 108 passengers with private toilet and shower in 4 quadruple porthole cabins, 9 twin porthole cabins, 25 twin cabins with window and 2 twin deluxe cabins, all (ca. 12,5 square meters) and 10 twin superior cabins (ca. 21 square meters). All cabins offer lower berths (one queen-size bed in the superior cabins and two single beds in the twin cabins), except for the 4 quadruple cabins (for 4 persons in 2x upper and lower beds).

## Plancius: a vessel with comfort and character

Please be aware that a small number of cabins may have a partially obstructed view due to the design requirements of the ship. The best view is always on the outer deck or the bridge. The vessel offers a restaurant/lecture room on deck 3 and a spacious observation lounge (with bar) on deck 5 with large windows, offering full panorama view. M/v "Plancius" has large open deck spaces (with full walk-around possibilities on deck 4), giving excellent opportunities to enjoy the scenery and wildlife. She is furthermore equipped with 10 Mark V zodiacs, including 40 HP 4-stroke outboard engines and 2 gangways on the starboard side, guaranteeing a swift zodiac operation. M/v "Plancius" is comfortable and nicely decorated, but is not a luxury vessel. Our voyages in the Arctic and Antarctic regions are primarily defined by an exploratory educational travel programme, spending as much time ashore as possible. Plancius fully meets our demands to achieve this. The vessel is equipped with a diesel-electric propulsion system which reduces the noise and vibration of the vessel considerably. The 3 diesel engines generate 1.230 horse-power each, giving the vessel a speed of 10 - 12 knots. The vessel is ice-strengthened and was specially built for oceanographic voyages. M/v "Plancius" is manned by an international crew of 37 (18 nautical crew and 19 hotel crew), 8 expedition staff (1 expedition leader, 1 assistant expedition leader and 6 guides/lecturers), and 1 doctor.

## Age and Nationality

Passengers on a typical voyage range from their 30s to their 80s - with a majority usually from 45 - 65. Our expeditions attract independent-minded travellers from around the world. They are characterised by a strong interest in exploring remote regions. The camaraderie and spirit that develops aboard is an important part of the expedition experience. Many departures have several nationalities on board.

## Dress code

In keeping with our expeditions atmosphere, dress on board is informal. Bring casual and comfortable clothing for all activities. Keep in mind that much of the spectacular scenery can be appreciated from deck, which can be slippery. Bring sturdy shoes with no-slip soles and make sure the parka is never far away in case of the call "Whales!" comes over the loudspeaker and you have to dash outside. Wear layers since it is comfortably warm aboard the ship - and often cold on deck.

## Currency & payment

Refreshments from the bar and souvenirs will be charged to your cabin. The day before departure you can settle your bill with the Hotel Manager and pay by credit card (Visa or MasterCard) or cash (Euro or Dollar). We do not accept cheques of any kind. The prices and standard currency on board our vessels is the Euro. Other currencies may be accepted at the discretion of the hotel manager at prevailing rates.

## Electric current

The electrical supply aboard the ship is 220v, 60Hz. Electrical outlets are standard European with two thick round pins. You may need a 220v/110v converter.



### Gratuities

The customary gratuity to the ship's service personnel is made as a blanket contribution at the end of the voyage which is divided among the crew. Tipping is a very personal matter and the amount you wish to give is at your discretion. As a generally accepted guideline, we suggest US\$8 to US\$10 per person per day. It is better for the crew, if you can give them cash US Dollar.

### Non-smoking policy

On board our vessels we have a non-smoking policy. It is prohibited to smoke inside the ship. You can smoke in the designated smoking areas. Please respect the wishes of non-smokers.

### Your physical condition

You must be in good general health and you should be able to walk several hours per day. The expedition is ship-based and physically not very demanding. Although we spend as much time as possible ashore, you are welcome to remain aboard the ship if you like. To join most excursions, you must be able to get up and down the steep gangway from the ship to the water level to board the Zodiacs. Staff will assist you in and out of the boats. This will become progressively easier with practice. Ashore it can be slippery and rocky. You are travelling in remote areas without access to sophisticated medical facilities, so you must not join this expedition if you have a life-threatening condition, or need daily medical treatment.



# M/V PLANGIUS - FACILITIES

LECTURE THEATRE



BAR LOUNGE



DINING





# YOUR DETAILED DAY BY DAY ITINERARY

## DAY 1

4th JANUARY 2024

### JOIN SHIP

#### END OF THE WORLD, START OF THE JOURNEY SOUTH

Your voyage begins where the world drops off. Ushuaia, Argentina, reputed to be the southernmost city on the planet, is located on the far southern tip of South America. Starting in the afternoon, you embark from this small resort town on Tierra del Fuego, nicknamed “The End of the World,” and sail the mountain-fringed Beagle Channel for the remainder of the evening.

**IMPORTANT NOTE:** All itineraries are for guidance only. Programs may vary depending on ice, weather, and wildlife conditions. Landings are subject to site availabilities, permissions, and environmental concerns per IAATO regulations. Official sailing plans and landing slots are scheduled with IAATO prior to the start of the season, but the expedition leader determines the final plan. Flexibility is paramount for expedition cruises. The average cruising speed for our vessel is 10.5 knots.

 **Meals Included:** Dinner.

## OVERNIGHT

### M/V PLACIUS



The ice-strengthened vessel Placius is an ideal vessel for polar expedition cruises in the Arctic and Antarctic and offers mid-range comfort.

[CLICK HERE TO LEARN MORE](#)



Photos for guidance only & not necessarily the room booked



THELATINAMERICATRAVELCOMPANY.COM | Email: [info@thelatinamericatraveltravelcompany.com](mailto:info@thelatinamericatraveltravelcompany.com)  
UK ☎: +44 (0) 20 8191 7772 | Part of HeadsEast Ltd - UK business registration: 6717612



# YOUR DETAILED DAY BY DAY ITINERARY

**DAY 2**

**5th JANUARY 2024**

## **AT SEA**

### **PATH OF THE POLAR EXPLORERS - CROSSING THE DRAKE PASSAGE**

Over the next two days on the Drake Passage, you enjoy some of the same experiences encountered by the great polar explorers who first charted these regions: cool salt breezes, rolling seas, maybe even a fin whale spouting up sea spray. After passing the Antarctic Convergence – Antarctica’s natural boundary, formed when north-flowing cold waters collide with warmer sub-Antarctic seas – you are in the circum-Antarctic upwelling zone.

Not only does the marine life change, the avian life changes too. Wandering albatrosses, grey-headed albatrosses, black-browed albatrosses, light-mantled sooty albatrosses, cape pigeons, southern fulmars, Wilson’s storm petrels, blue petrels, and Antarctic petrels are a few of the birds you might see.

 **Meals Included:** Breakfast, Lunch & Dinner.

**OVERNIGHT**

## **M/V PLACIUS**



The ice-strengthened vessel Plancius is an ideal vessel for polar expedition cruises in the Arctic and Antarctic and offers mid-range comfort.

[CLICK HERE TO LEARN MORE](#)



Photos for guidance only & not necessarily the room booked



THELATINAMERICATRAVELCOMPANY.COM | Email: [info@thelatinamericatraveltravelcompany.com](mailto:info@thelatinamericatraveltravelcompany.com)  
UK ☎: +44 (0) 20 8191 7772 | Part of HeadsEast Ltd - UK business registration: 6717612







# YOUR DETAILED DAY BY DAY ITINERARY

**DAY 3**

**6th JANUARY 2024**

 **AT SEA**

**CONTINUE ACROSS THE DRAKE PASSAGE**

**THE DRAKE PASSAGE** Sailing south from the entrance of the Strait of Magellan, Spanish navigator Francisco de Hoces discovered this passage in 1525, making him the first European to pass through it. For this reason, it appears as Mar de Hoces in most Spanish and Spanish American maps and sources.

The passage received its English name from the 16th-century privateer Francis Drake during his circumnavigation. After passing through the Strait of Magellan with Marigold, Elizabeth, and his flagship Golden Hind, Drake entered the Pacific Ocean and was blown far south in a tempest. Marigold was lost, and Elizabeth abandoned the fleet. Only Drake's Golden Hind entered the passage. This incident demonstrated to the English that there was open water south of South America.

The first recorded voyage through the passage was that of Eendracht, captained by the Dutch navigator Jacob Le Maire in 1616, naming Cape Horn in the process.

 **Meals Included:** Breakfast, Lunch & Dinner.

**OVERNIGHT**

**M/V PLACIUS**



The ice-strengthened vessel Placius is an ideal vessel for polar expedition cruises in the Arctic and Antarctic and offers mid-range comfort.

[CLICK HERE TO LEARN MORE](#)



Photos for guidance only & not necessarily the room booked



THELATINAMERICATRAVELCOMPANY.COM | Email: [info@thelatinamericatraveltravelcompany.com](mailto:info@thelatinamericatraveltravelcompany.com)  
UK ☎: +44 (0) 20 8191 7772 | Part of HeadsEast Ltd - UK business registration: 6717612



# YOUR DETAILED DAY BY DAY ITINERARY

DAY 4

7th JANUARY 2024

## ANTARCTICA

### A WELCOME ARRIVAL TO THE ANTARCTIC PENINSULA

Gray stone peaks sketched with snow, towers of broken blue-white ice, and dramatically different wildlife below and above. You first pass the snow-capped Melchior Islands and Schollaert Channel, sailing between Brabant and Anvers Islands. Over the next days, subject to weather conditions you may see the following:

**Neumayer Channel:** The vessel may position itself here, launching its multiple basecamp activities from the protected waters around Wiencke Island. You can enjoy the splendors of this alpine environment at sea with Zodiac and kayaking trips, or if you're in the mood for a walk, there are possible snowshoe hikes and soft-climb mountaineering options farther inland. Naturally, favorable weather conditions determine the possible activities.

**Port Lockroy:** After sailing through the Neumayer Channel, you may get a chance to visit the former British research station – now a museum and post office – of Port Lockroy on Goudier Island. You may also be able to partake in activities around Jougla Point, meeting gentoo penguins and blue-eyed shags. At the nearby sites, such as Damoy Point there may be the opportunity for snowshoeing to the old ski-way, this is also one of our favourite camping sites.

 **Meals Included:** Breakfast, Lunch & Dinner.

OVERNIGHT

## M/V PLACIUS



The ice-strengthened vessel Placius is an ideal vessel for polar expedition cruises in the Arctic and Antarctic and offers mid-range comfort.

[CLICK HERE TO LEARN MORE](#)



Photos for guidance only & not necessarily the room booked



THELATINAMERICATRAVELCOMPANY.COM | Email: [info@thelatinamericatraveltravelcompany.com](mailto:info@thelatinamericatraveltravelcompany.com)  
UK ☎: +44 (0) 20 8191 7772 | Part of HeadsEast Ltd - UK business registration: 6717612



# ANTARCTICA SCENERY



## DAY 5

8th JANUARY 2024

### ANTARCTICA

#### CONTINUE TO EXPLORE THE ANTARCTIC PENINSULAR

Gray stone peaks sketched with snow, towers of broken blue-white ice, and dramatically different wildlife below and above. You first pass the snow-capped Melchior Islands and Schollaert Channel, sailing between Brabant and Anvers Islands. Over the next days, subject to weather conditions you may see the following:

**Pléneau & Petermann Islands:** If the ice allows it, you can sail through the Lemaire Channel in search of Adélie penguins and blue-eyed shags. There's also a good chance you'll encounter humpback and minke whales here, as well as leopard seals. Kayaking, glacier walks, and more ambitious mountaineering trips are the potential activities of this location.

**Neko Harbour:** An epic landscape of mammoth glaciers and endless wind-carved snow, Neko Harbour offers opportunities for a Zodiac cruise and landing that afford the closest views of the surrounding alpine peaks.

**Paradise Bay:** You have the chance to make camp here like a true polar explorer, enjoying a supreme overnight Antarctic adventure.

**Errera Channel:** Possible sites in this area include Danco Island and Cuverville Island, but also the lesser known (though equally picturesque) Orne Island and Georges Point on Rongé Island.

 **Meals Included:** Breakfast, Lunch & Dinner.

## OVERNIGHT

### M/V PLANCIUS



The ice-strengthened vessel Plancius is an ideal vessel for polar expedition cruises in the Arctic and Antarctic and offers mid-range comfort.

[CLICK HERE TO LEARN MORE](#)



Photos for guidance only & not necessarily the room booked



# YOUR DETAILED DAY BY DAY ITINERARY

DAY 6

9th JANUARY 2024

## ANTARCTICA

CONTINUE TO EXPLORE THE ANTARCTIC PENINSULAR

 **Meals Included:** Breakfast, Lunch & Dinner.



**Camping:** Special gear and field equipment will be provided. Camping is subject to weather, local site and environmental regulations.



**Hiking:** There will be easy, moderate and more demanding walks available in the vicinity of the landing sites. Rubber boots with a grip sole appropriate for hiking will be provided on our motor vessels but not on our smaller sailing vessel for which you should bring your own sturdy ankle-high hiking boots and gaiters.

OVERNIGHT

## M/V PLACIUS



The ice-strengthened vessel Placius is an ideal vessel for polar expedition cruises in the Arctic and Antarctic and offers mid-range comfort.

[CLICK HERE TO LEARN MORE](#)



Photos for guidance only & not necessarily the room booked



THELATINAMERICATRAVELCOMPANY.COM | Email: [info@thelatinamericatraveltravelcompany.com](mailto:info@thelatinamericatraveltravelcompany.com)  
UK ☎: +44 (0) 20 8191 7772 | Part of HeadsEast Ltd - UK business registration: 6717612



# YOUR DETAILED DAY BY DAY ITINERARY

DAY 7

10th JANUARY 2024

## ANTARCTICA

CONTINUE TO EXPLORE THE ANTARCTIC PENINSULAR

 **Meals Included:** Breakfast, Lunch & Dinner.



**Snowshoeing:** Snowshoe walking is easy and does not require any technical skills. The snowshoes will fit all boot sizes and can be used in combination with Oceanwide's rubber boots.



**Kayaking:** Basic kayaking experience is of advantage, but it is not a requirement. Physical fitness is essential. Kayaking is subject to weather and prevailing ice conditions.

OVERNIGHT

## M/V PLANCIUS



The ice-strengthened vessel Plancius is an ideal vessel for polar expedition cruises in the Arctic and Antarctic and offers mid-range comfort.

[CLICK HERE TO LEARN MORE](#)



Photos for guidance only & not necessarily the room booked



THELATINAMERICATRAVELCOMPANY.COM | Email: [info@thelatinamericatraveltravelcompany.com](mailto:info@thelatinamericatraveltravelcompany.com)  
UK ☎: +44 (0) 20 8191 7772 | Part of HeadsEast Ltd - UK business registration: 6717612







# YOUR DETAILED DAY BY DAY ITINERARY

**DAY 8**

**11th JANUARY 2024**

## **ANTARCTICA**

**CONTINUE TO EXPLORE THE ANTARCTIC PENINSULAR**

 **Meals Included:** Breakfast, Lunch & Dinner.



**Port Lockroy** is a former Antarctic base located on a scenic bay on Goudier Island, southwest of Wiencke Island, Antarctic Peninsula. French explorer Jean-Baptiste Charcot discovered the bay after which was named during his 1903 -1905 expedition, naming Port Lockroy after the politician who helped finance his expedition.



**Neko Harbour** - whaling ship Neko, is where this Antarctic bay got its name. Gentoo penguins breed on the hill above Neko Harbour, while Weddell & fur seals often haul out on the beach. But even if the Neko Harbour wildlife does not make an appearance, the scenery is nevertheless fantastic.

**OVERNIGHT**

**M/V PLACIUS**



The ice-strengthened vessel Placius is an ideal vessel for polar expedition cruises in the Arctic and Antarctic and offers mid-range comfort.

[CLICK HERE TO LEARN MORE](#)



Photos for guidance only & not necessarily the room booked



THELATINAMERICATRAVELCOMPANY.COM | Email: [info@thelatinamericatraveltravelcompany.com](mailto:info@thelatinamericatraveltravelcompany.com)  
UK ☎: +44 (0) 20 8191 7772 | Part of HeadsEast Ltd - UK business registration: 6717612



# YOUR DETAILED DAY BY DAY ITINERARY

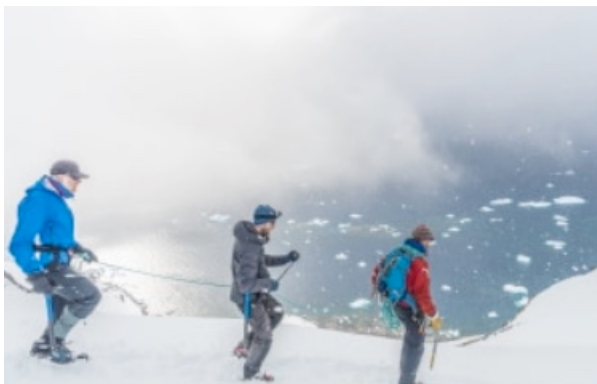
DAY 9

12th JANUARY 2024

## ANTARCTICA

CONTINUE TO EXPLORE THE ANTARCTIC PENINSULAR

 **Meals Included:** Breakfast, Lunch & Dinner.



**Mountaineering:** Mountaineering knowledge is preferable, but not required. Physical fitness is essential. Mountaineering must be pre-booked prior to departure. Mountaineering is subject to weather and local site conditions.



**Photo Workshop:** Participants with a special interest in photography will bring their personal photo equipment. The workshop must be pre-booked prior to departure.

OVERNIGHT

## M/V PLANCIUS



The ice-strengthened vessel Plancius is an ideal vessel for polar expedition cruises in the Arctic and Antarctic and offers mid-range comfort.

[CLICK HERE TO LEARN MORE](#)



Photos for guidance only & not necessarily the room booked



THELATINAMERICATRAVELCOMPANY.COM | Email: [info@thelatinamericatraveltravelcompany.com](mailto:info@thelatinamericatraveltravelcompany.com)  
UK ☎: +44 (0) 20 8191 7772 | Part of HeadsEast Ltd - UK business registration: 6717612



**DAY 10**

**13th JANUARY 2024**

## SOUTH SHETLAND

### TRY TO VISIT THE MELCHIOR & SOUTH SHETLAND ISLANDS

On your last day of near-shore activities, you pass the Melchior Islands toward the open sea. Keep a sharp lookout for humpback whales in Dallmann Bay. You might also shoot for Half Moon Island, in the South Shetlands, with further chances for activities. Conditions on the Drake Passage determine the exact time of departure.

 **Meals Included:** Breakfast, Lunch & Dinner.

**OVERNIGHT**

## M/V PLACIUS



The ice-strengthened vessel Placius is an ideal vessel for polar expedition cruises in the Arctic and Antarctic and offers mid-range comfort.

[CLICK HERE TO LEARN MORE](#)



Photos for guidance only & not necessarily the room booked





# YOUR DETAILED DAY BY DAY ITINERARY

**DAY 11**

**14th JANUARY 2024**

## AT SEA

### HEAD BACK ACROSS THE DRAKE PASSAGE TO USHUAIA

Your return voyage across the Drake Passage is far from lonely. While crossing the Drake, you're again greeted by the vast array of seabirds remembered from the passage south. But they seem a little more familiar to you now, and you to them.

 **Meals Included:** Breakfast, Lunch & Dinner.



**OVERNIGHT**

## M/V PLACIUS



The ice-strengthened vessel Placius is an ideal vessel for polar expedition cruises in the Arctic and Antarctic and offers mid-range comfort.

[CLICK HERE TO LEARN MORE](#)



Photos for guidance only & not necessarily the room booked



THELATINAMERICATRAVELCOMPANY.COM | Email: [info@thelatinamericatraveltravelcompany.com](mailto:info@thelatinamericatraveltravelcompany.com)  
UK ☎: +44 (0) 20 8191 7772 | Part of HeadsEast Ltd - UK business registration: 6717612



# YOUR DETAILED DAY BY DAY ITINERARY

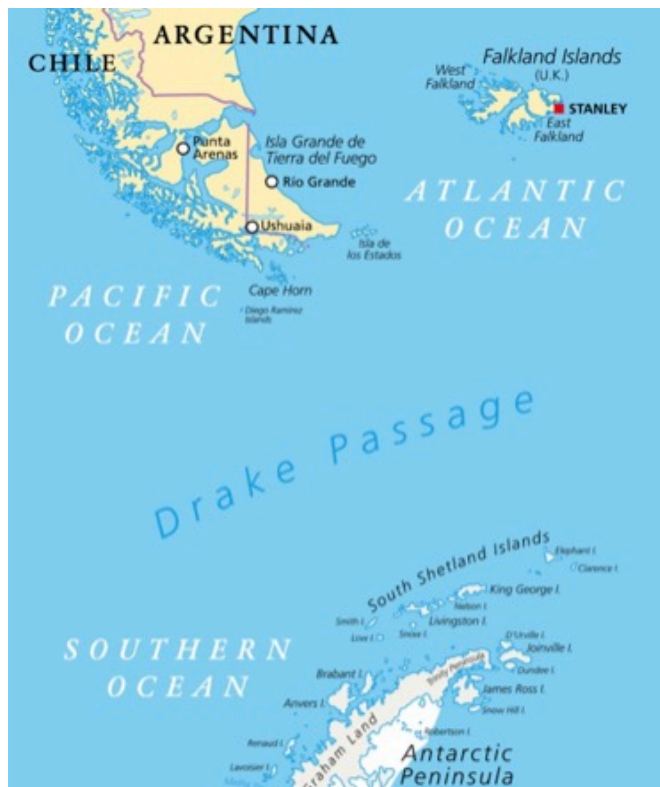
**DAY 12**

**15th JANUARY 2024**

 **AT SEA**

**LAST DAY ON THE DRAKE BEFORE ARRIVAL IN ARGENTINA TOMORROW**

 **Meals Included:** Breakfast, Lunch & Dinner.



**OVERNIGHT**

**M/V PLACIUS**

★ ★ ★

The ice-strengthened vessel Placius is an ideal vessel for polar expedition cruises in the Arctic and Antarctic and offers mid-range comfort.

[CLICK HERE TO LEARN MORE](#)



Photos for guidance only & not necessarily the room booked



THELATINAMERICATRAVELCOMPANY.COM | Email: [info@thelatinamericatraveltravelcompany.com](mailto:info@thelatinamericatraveltravelcompany.com)  
UK ☎: +44 (0) 20 8191 7772 | Part of HeadsEast Ltd - UK business registration: 6717612



**DAY 13**

**16th JANUARY 2024**

## USHUAIA

### ARRIVAL BACK IN ARGENTINA

Every adventure, no matter how grand, must eventually come to an end. It's now time to disembark in Ushuaia, but with memories that will accompany you wherever your next adventure lies.

On arrival a transfer to your hotel with the rest of the day free to get used to dry land again!

---

 **Meals Included:** Breakfast.



**LATC Founder Chris**

*"Antarctica is without doubt the most amazing trip I have made anywhere in the world and totally unique from every aspect and I will be going back to see more of the frozen continent on a regular basis. It is both a privilege and a responsibility to be able to send our clients."*



antarctica  
flora & fauna  
INFOGRAPHIC

ANIMALS:

hourglass dolphin, weddell seal, crabeater seal, leopard seal, ross seal

SEA LIFE:

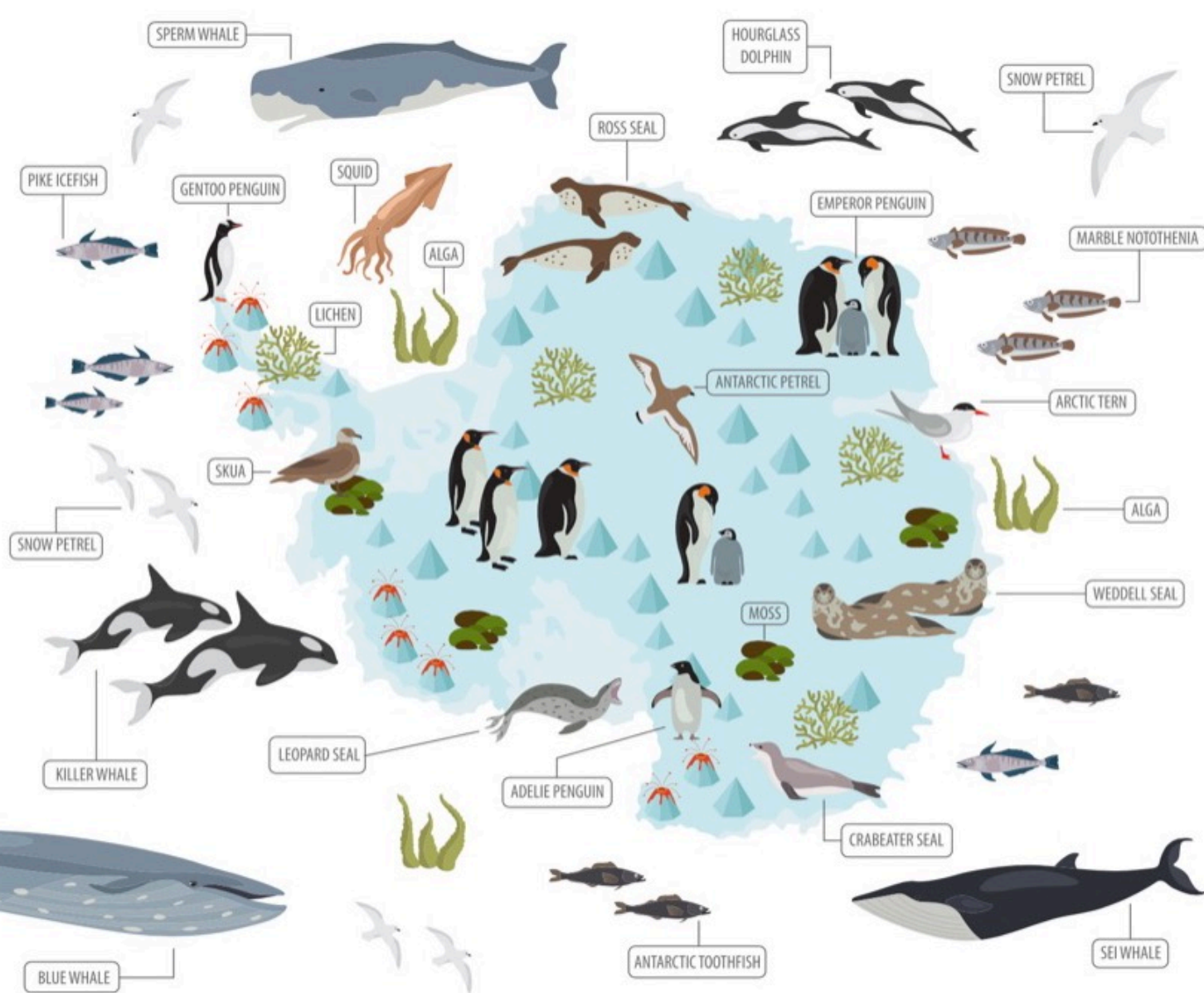
sperm whale, blue whale, killer whale, squid, sei whale, marble notothenia, antarctic toothfish, pike icefish

BIRDS:

emperor penguin, adelic penguin, gentoo penguin, antarctic petrel, snow petrel, skua, arctic tern

PLANTS:

lichen, moss, alga





**TRIP CODE: PLA26-24: ANTARCTIC BASE CAMP - START & FINISH DATES**

Starts Ushuaia 4th January 2024 and Finishes Ushuaia 16th January 2024 - Guided in: English

CABIN	EURO	GBP**	USD**
4 berth Quadruple Porthole - price per berth	€8,500	£7,650	US\$9,350
3 berth Triple Porthole - price per berth	€10,450	£9,405	US\$11,495
Twin Porthole - price per berth	€10,450	£9,405	US\$11,495
Twin Porthole - single occupancy	€17,765	£15,989	US\$19,542
Twin Window - price per berth	€10,900	£9,810	US\$11,990
Twin Window - single occupancy	€18,530	£16,677	US\$20,383
Twin Deluxe - price per berth	€11,550	£10,395	US\$12,705
Twin Deluxe - single occupancy	€19,635	£17,672	US\$21,599
Superior - price per person (only double bed)	€12,300	£11,070	US\$13,530
Superior - single occupancy	€20,910	£18,819	US\$23,001
Kayaking, camping, hiking, mountaineering, snowshoeing	Free	Free	Free

**NOTE:** If you book a berth as a single person in a shared cabin the other occupants of the cabin will be of the same gender.

**\*\* GBP and USD prices** are for guidance only and final price will be based on the exchange rate at time of booking.

**IMPORTANT NOTE:** All itineraries are for guidance only. Programs may vary depending on ice, weather, and wildlife conditions. Landings are subject to site availabilities, permissions, and environmental concerns per IAATO regulations. Official sailing plans and landing slots are scheduled with IAATO prior to the start of the season, but the expedition leader determines the final plan. Flexibility is paramount for expedition cruises. The average cruising speed for our vessel is 10.5 knots.



## INCLUSIONS & EXCLUSIONS FOR THIS ITINERARY

### ■ ANTARCTIC CRUISE:

✓ 12 night / 13 Day Antarctic Cruise on the M/V Plancius - Cabin TBC.

#### Cruise Includes:

- ✓ Voyage aboard the indicated vessel as indicated in the itinerary.
- ✓ All meals throughout the voyage aboard the ship including snacks, coffee and tea.
- ✓ All shore excursions and activities throughout the voyage by Zodiac.
- ✓ Program of lectures by noted naturalists and leadership by experienced expedition staff.
- ✓ Free use of rubber boots and snowshoes.
- ✓ Luggage transfer from pick-up point to the vessel on the day of embarkation, in Ushuaia.
- ✓ Pre-scheduled group transfer from the vessel to the airport in Ushuaia (directly after disembarkation).
- ✓ All miscellaneous service taxes and port charges throughout the programme.
- ✓ Comprehensive pre-departure material.
- ✓ During our “Basecamp” departures, all offered activities (including camping, kayaking, snowshoe/hiking, mountaineering, photo workshop) as well as our standard included shore excursions and zodiac cruises) are free of charge.

#### Cruise Excludes:

- ✓ Any airfare, whether on scheduled or charter flights
- ✓ Pre- and post- land arrangements.
- ✓ Passport and visa expenses.
- ✓ Government arrival and departure taxes.
- ✓ Meals ashore.
- ✓ Baggage, cancellation and personal insurance (which is strongly recommended).
- ✓ Excess baggage charges and all items of a personal nature such as laundry, bar, beverage charges and telecommunication charges.
- ✓ The customary gratuity at the end of the voyages for stewards and other service personnel aboard (guidelines will be provided).

**Important Note:** All itineraries are for guidance only. Programs may vary depending on ice, weather, and wildlife conditions. Landings are subject to site availabilities, permissions, and environmental concerns per IAATO regulations. Official sailing plans and landing slots are scheduled with IAATO prior to the start of the season, but the expedition leader determines the final plan. Flexibility is paramount for expedition cruises. The average cruising speed for our vessel is 10.5 knots.

