

C/S LA PINTA



La Pinta is a stylish and sophisticated luxury expedition yacht. At just over 200 feet long the mid-sized vessel accommodates 48 guests in some of the largest cabins on any yacht currently sailing in the Galapagos. Each well appointed stateroom features large floor to ceiling picture windows for the best possible views and the ample en-suite bathrooms include designer toiletries by L'Occitane. Guests can relax in the attractive sky bar, take a dip in the hot tub, watch dolphins from the observation deck or unwind on the sun deck. There is also a natural history library, a gym and several dining spaces. The seasoned captain and crew are joined by fully trained and qualified naturalist guides and expedition leaders who give daily onboard lectures and take passengers on carefully planned excursions in groups of no more than 10 people for a highly personalised experience. La Pinta is also equipped with 4 inflatable landing crafts and a glass bottom boat.

"With some of the largest cabins of any yacht in the Galapagos, this is expedition cruising at its finest!"

YOUR GALAPAGOS CRUISE



**Safe
travels**

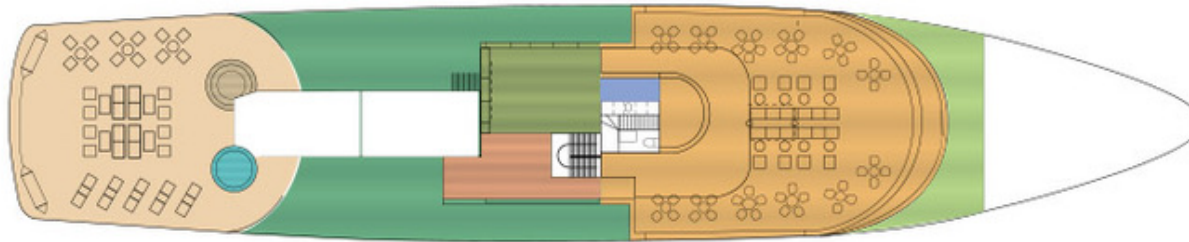
by

WORLD
TRAVEL &
TOURISM
COUNCIL



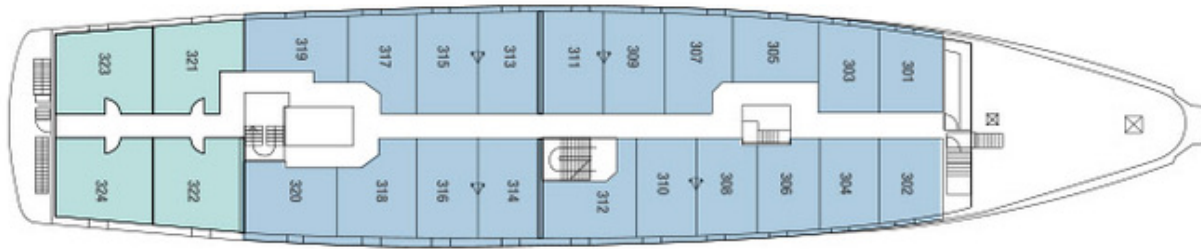
C/S LA PINTA - DECK PLANS

Sun Deck



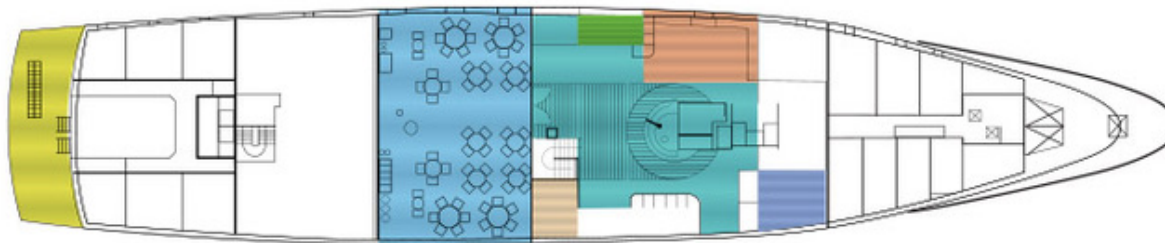
- Observation Decks
- Outside Sky Bar
- Restrooms
- Open Decks
- Natural History Library
- Fitness Room
- Hot Tub
- Observation Lounge & Bar
- ▽ Interconnecting cabins

Cabin Deck



- Luxury Cabins
- Luxury Plus Cabins
- ▽ Interconnecting cabins

Main Deck



- Reception Area
- Gift Shop
- Disembarkation Gangway
- Infirmary
- Restaurant
- Restrooms
- Disembarkation/Embarkation Gangway





TO NOTE

- Jacuzzi
- Spacious cabins
- Gourmet cuisine and fine dining
- Industry leading expedition staff

FACILITIES

- 48 passenger capacity & 27 crew
- 24 staterooms
- Soft drinks included, alcohol extra
- iPod docking station
- Family departures
- 16 passengers max for excursions
- Cardio gym
- Wifi included (intermittent)
- Snorkels wetsuits kayaks included



LUXURY CABIN



INTRODUCTION

Yacht La Pinta boasts some of the largest cabins of any Galapagos expedition vessel, with floor-to-ceiling windows and plenty of space. The bathrooms are also very ample by Galapagos standards.

The yacht's straightforward cabin configuration is distributed across the Cabin Deck. There are 20 Luxury Cabins (Twin/ Doubles) and 4 Luxury Plus Cabins (Triples) . All of the beds can be separated or joined according to guests' needs. Four cabins can be interconnected for friends or families traveling together.



LUXURY PLUS CABIN



C/S LA PINTA - FACILITIES

LOUNGE



DINING



HOT TUB



C/S LA PINTA - THE BOAT



THELATINAMERICATRAVELCOMPANY.COM | Email: info@thelatinamericatraveltravelcompany.com
UK ☎: +44 (0) 20 8191 7772 | Part of HeadsEast Ltd - UK business registration: 6717612









INTRODUCTION

We're delighted to have you on board for this journey of discovery to some of the most beautiful islands in the Galapagos. Our itinerary together begins on Santa Cruz Island, the most populous of the archipelago, where we meet giant tortoises in the wild and then venture to the shores of Eden Islet. From there, we hop over to the lovely crescent bay of Chinese Hat.

On Wednesday, one of the iconic sites of the archipelago awaits: Bartolome Island, with its wooden walkway up to a panoramic viewpoint, golden sandy beach and great snorkelling opportunities. Close-by, Sullivan Bay gives us a great introduction to the volcanic origins of the islands.

We end with an exciting visit to the sunken caldera of Genovesa, far up in the northeast of the archipelago, a privileged place to visit amid thousands of marine birds. The entire crew aboard La Pinta will do our utmost to ensure your Galapagos experience is truly deeply moving and memorable.

	AM VISITS	ISLAND	AQUATIC ACTIVITIES	PM VISITS	ISLAND	AQUATIC ACTIVITIES	HIGHLIGHTS
Monday	Baltra Airport	Baltra Island		Giant Tortoise Reserve	Santa Cruz Island		Genovesa Islands Bartolome &
Tuesday	Eden Islet	Santa Cruz Island		Chinese Hat Islet	Chinese Hat Islet		
Wednesday	Bartolome Island	Bartolome Island		Sullivan Bay	Santiago Island		
Thursday	Darwin Bay	Genovesa Island		Prince Phillip Steps	Genovesa Island		
Friday	Baltra Airport	Baltra Island					

Itineraries for reference only. Our route and programs may vary due to National Park policies and regulations, weather conditions, seasonal changes, safety and operational reasons, and the wildlife we encounter.

Aquatic activities:  snorkeling  panga ride  kayaking  glass-bottom boat  beach  swimming  paddleboarding

YOUR DETAILED DAY BY DAY ITINERARY

DAY 1 - MONDAY

DATE TBC

GALAPAGOS

BALTRA AIRPORT & HIGHLANDS (SANTA CRUZ ISLAND)

Following our morning arrival at Baltra Airport, we transfer to the Itabaca Channel, taking a small ferry across the channel to the north shore of Santa Cruz Island. We board our bus to the highlands, where we'll learn about Santa Cruz's unique ecosystems and biodiversity. Lunch is served at a local restaurant.

After lunch, we continue by bus to reach a reserve that is one of the best places in the archipelago to see giant tortoises in their natural habitat. The tortoises are easy to spot, lumbering around, eating grass and leaves and wallowing in the small pools. There are several lava tunnels in the reserve, too. A short bus ride takes us down to Puerto Ayora to board Yacht La Pinta.

IMPORTANT NOTE: All Galapagos itineraries described are subject to weather conditions at the time and may be altered by the Captain whose decision is final.

IMPORTANT NOTE: Yacht La Pinta operates on a 15-day cycle (to cover each separate region of the archipelago), meaning that not all Mondays of the year will serve as departure dates for this specific itinerary. Please refer to our Sailing Dates table for exact departure dates for Mondays of the year.

 **Meals Included:** Lunch & Dinner.

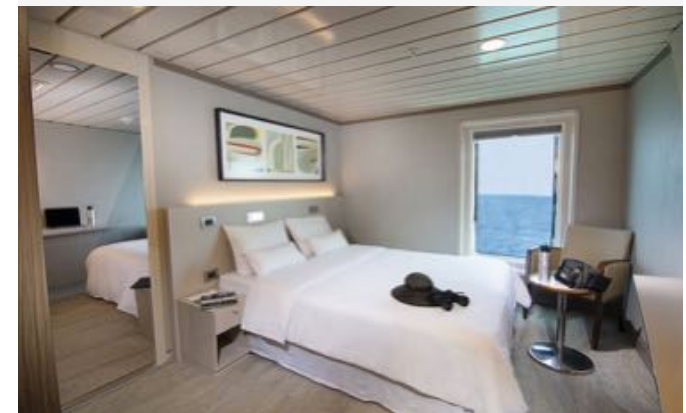
OVERNIGHT

C/S LA PINTA



An elegant and sophisticated mid-sized luxury yacht with fine dining and all the creature comforts. Excellent for both families and couples.

[CLICK HERE TO LEARN MORE](#)



Photos for guidance only & not necessarily the room booked



THELATINAMERICATRAVELCOMPANY.COM | Email: info@thelatinamericatraveltravelcompany.com
UK ☎: +44 (0) 20 8191 7772 | Part of HeadsEast Ltd - UK business registration: 6717612



YOUR DETAILED DAY BY DAY ITINERARY

DAY 2 - TUESDAY

DATE TBC

GALAPAGOS

EDEN ISLET (SANTA CRUZ ISLAND) & SOMBRERO CHINO ISLET

After breakfast, a panga ride takes us to Eden Islet, located off the coast of Santa Cruz, where we can observe blue-footed boobies diving into the water, reef sharks and frigates. There's a chance to snorkel and, if weather conditions permit, to ride in the glass-bottom boat. The volcanic setting of this area is quite stunning due to its variety of volcanic debris, including cinder cones, tuff cones, and semi-eroded lava flows.

The tiny island of Sombrero Chino gets its name from its appearance, reminiscent of a Chinese hat. This islet, formed only fairly recently, makes a beautiful visit as one explores the wildlife along its 400-metre long trail, which begins at a crescent-shaped white sandy beach. The cove offers excellent swimming and snorkelling opportunities amid white-tipped reef sharks and Galapagos penguins.

 **Meals Included:** Breakfast, Lunch & Dinner.

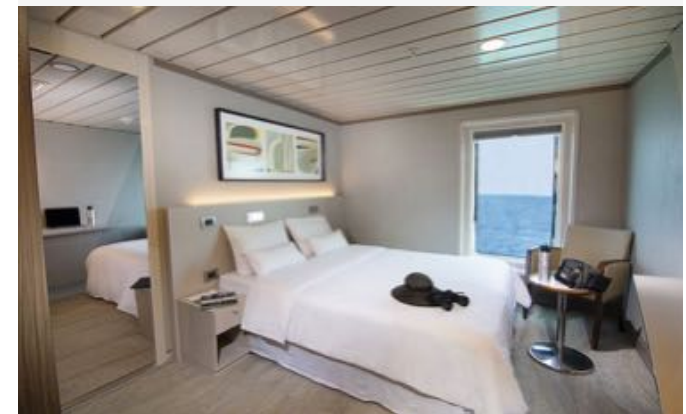
OVERNIGHT

C/S LA PINTA



An elegant and sophisticated mid-sized luxury yacht with fine dining and all the creature comforts. Excellent for both families and couples.

[CLICK HERE TO LEARN MORE](#)



Photos for guidance only & not necessarily the room booked



YOUR DETAILED DAY BY DAY ITINERARY

DAY 3 - WEDNESDAY

DATE TBC

GALAPAGOS

BARTOLOME ISLAND & SULLIVAN BAY (SANTIAGO ISLAND)

This morning, a Galapagos icon awaits: Bartolome Island. A great way to start the day, with a steep climb up a wooden staircase: the view from the top is worth the effort! Following the walk, we take to the dinghies for a ride around colossal Pinnacle Rock, followed by time to enjoy the beach and some snorkelling. We can also ride in the glass-bottom boat for great views of the underwater world.

After lunch, we board the pangas to land at Sullivan Bay on the east coast of Santiago, a white coral sand beach great for swimming and snorkelling, and with a trail over a lava field that flowed here less than 100 years ago. This is the perfect place to see and feel the volcanic origin of Galapagos while observing its wildlife.

 **Meals Included:** Breakfast, Lunch & Dinner.

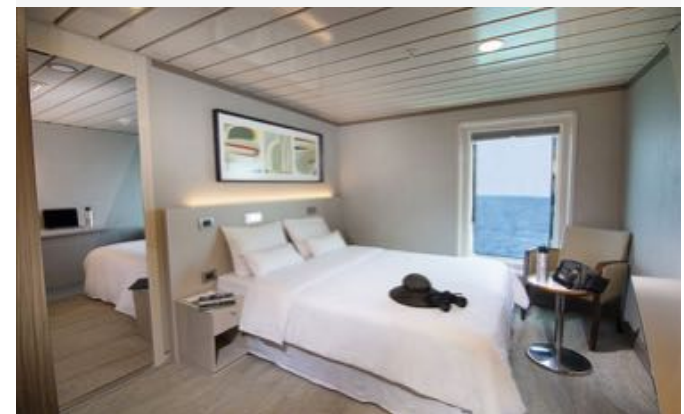
OVERNIGHT

C/S LA PINTA



An elegant and sophisticated mid-sized luxury yacht with fine dining and all the creature comforts. Excellent for both families and couples.

[CLICK HERE TO LEARN MORE](#)



Photos for guidance only & not necessarily the room booked



YOUR DETAILED DAY BY DAY ITINERARY

DAY 4 - THURSDAY

DATE TBC

GALAPAGOS

DARWIN BAY & PRINCE PHILIP'S STEPS (GENOVESA ISLAND)

In the morning, we begin our exploration of this island with an easy stroll to observe marine and land birds. There is an optional walk over sharp lava and uneven terrain for dramatic views, or else we can return to the beach to enjoy swimming and snorkelling at this beautiful natural harbour. The more adventurous can snorkel along the cliffs or paddle sea kayaks.

The afternoon starts with a very interesting panga ride along the cliffs before we disembark for a short but steep climb up a wooden staircase. Once at the top, the land is flat, allowing for a captivating walk of about a mile to the other side of this small island, observing large colonies of Nazca boobies, frigate birds and storm petrels, and the elusive short-eared owl.

 **Meals Included:** Breakfast, Lunch & Dinner.

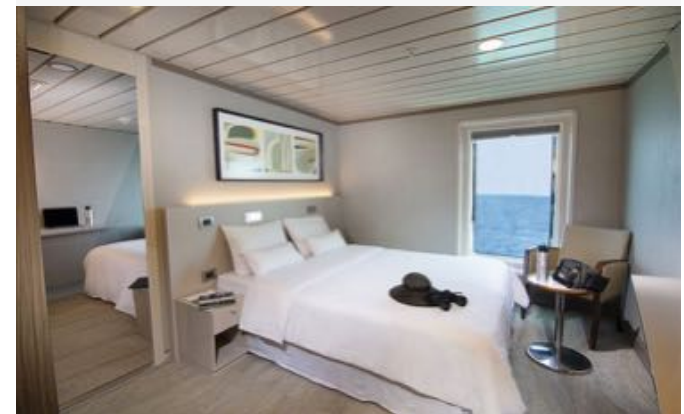
OVERNIGHT

C/S LA PINTA



An elegant and sophisticated mid-sized luxury yacht with fine dining and all the creature comforts. Excellent for both families and couples.

[CLICK HERE TO LEARN MORE](#)



Photos for guidance only & not necessarily the room booked



YOUR DETAILED DAY BY DAY ITINERARY

DAY 5 - FRIDAY

DATE TBC

 **END**

BALTRA AIRPORT FOR A FLIGHT TO THE MAINLAND

Our journey ends at Baltra Island, where we transfer to the airport to take the flight back to the mainland. Baltra's flat substrate (due to its uplifted origin) is the reason why the island was chosen back in the 1940s as the location for building an airport.

 **Meals Included:** Breakfast.



INTRODUCTION

We're delighted to have you on board for this journey of discovery to some of the most beautiful islands in the Galapagos. Our itinerary together begins on Baltra Island, a former military base during World War II, and now an Ecuadorian naval and air force station. Once all formalities are completed, we venture east along the volcanic shores of North Seymour and Santa Cruz Islands, until we reach the Plazas Islands. Our adventures start with a dry landing at a manmade jetty on South Plaza Island.

During the next day, we will explore Santa Fe Island and San Cristobal Island, home to the provincial capital of the Galapagos province. Then, we sail south to Española Island, with its remarkable visitor site (a favourite of many visitors): Punta Suarez. Here, we'll wander along the rugged coastline, home to hundreds of marine iguanas, sea lions, marine birds, and even albatross (during much of the year). In the afternoon, Gardner Bay provides a wonderful setting for a combination of beach-time, swimming, snorkelling or exploring aboard the glass-bottom boat. We end on Monday with a visit to the world-famous Charles Darwin Research Station on Santa Cruz Island, the most populous in the archipelago. Wherever we sail, whatever we do, the entire crew aboard La Pinta will do our utmost to ensure your Galapagos experience is truly deeply moving and memorable.

	AM VISITS	ISLAND	AQUATIC ACTIVITIES	PM VISITS	ISLAND	AQUATIC ACTIVITIES	HIGHLIGHTS
Thursday	Baltra Airport	Baltra Island		South Plaza Island	South Plaza Island		Española & San Cristobal Islands
Friday	Santa Fe Island	Santa Fe Island	 	Cerro Colorado Tortoise Breeding Centre	San Cristobal Island		
Saturday	Punta Pitt	San Cristobal Island	 	Cerro Brujo	San Cristobal Island	 	
Sunday	Punta Suarez	Española Island		Gardner Bay	Española Island	  	
Monday	Charles Darwin Research Station /Baltra Airport	Santa Cruz Island/ Baltra Island					

Itineraries for reference only. Our route and programs may vary due to National Park policies and regulations, weather conditions, seasonal changes, safety and operational reasons, and the wildlife we encounter.

Aquatic activities:  snorkeling  panga ride  kayaking  glass-bottom boat  beach  swimming  paddleboarding



YOUR DETAILED DAY BY DAY ITINERARY

DAY 1 - THURSDAY

DATE TBC

GALAPAGOS

BALTRA AIRPORT & SOUTH PLAZA ISLAND

Our adventure begins with a morning flight to Baltra Island and immediate transfer to the dock to board Yacht La Pinta. There's a welcome introductory briefing, boat drill, cabin assignment and then lunch. We weigh anchor and start sailing for our first afternoon outing.

The turquoise waters of the channel here contrast brilliantly with the white sand and black lava of the shoreline, while a carpet of scarlet sesuvium succulents serves as ground cover for a grove of luminescent green prickly-pear cactus beyond, populated by yellow-grey land iguanas. Along the coastline one finds sea lion colonies, while sea birds play with the thermals that form along the cliffs of this small but spectacular island.

IMPORTANT NOTE: All Galapagos itineraries described are subject to weather conditions at the time and may be altered by the Captain whose decision is final.

IMPORTANT NOTE: Yacht La Pinta operates on a 15-day cycle (to cover each separate region of the archipelago), meaning that not all Thursdays of the year will serve as departure dates for this specific itinerary. Please refer to our Sailing Dates table for exact departure dates for Thursdays of the year.

 **Meals Included:** Lunch & Dinner.

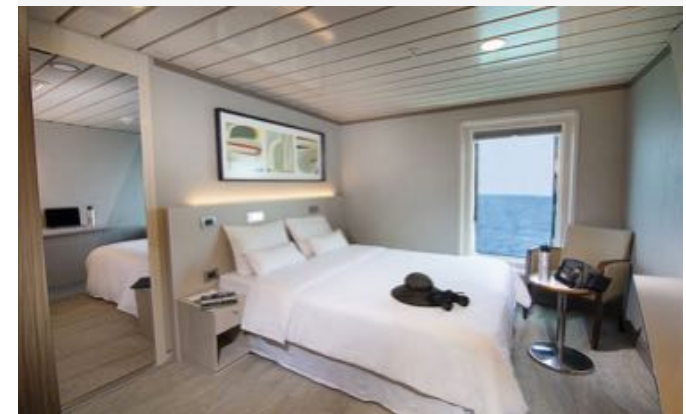
OVERNIGHT

C/S LA PINTA



An elegant and sophisticated mid-sized luxury yacht with fine dining and all the creature comforts. Excellent for both families and couples.

[CLICK HERE TO LEARN MORE](#)



Photos for guidance only & not necessarily the room booked



YOUR DETAILED DAY BY DAY ITINERARY

DAY 2 - FRIDAY

DATE TBC

GALAPAGOS

SANTA FE ISLAND & CERRO COLORADO TORTOISE HABITAT

We take the dinghy over to this idyllic sandy-white beach populated by colonies of sea lions. Galapagos hawks are often easily observed, perched atop salt bushes. The Santa Fe land iguana, unique to just this island, may be spotted during the walk. Following the walk, we can snorkel and swim along a natural wave barrier or ride the glass-bottom boat.

After lunch, we disembark at Puerto Baquerizo Moreno, the island's capital, and drive 40 minutes to the island's southern shore. At Cerro Colorado, we visit the breeding centre for highly endangered giant tortoises in the midst of a fantastic deciduous forest, home to dozens of bird species, including the San Cristobal mockingbird, and the San Cristobal lava lizard, both island endemics.

 **Meals Included:** Breakfast, Lunch & Dinner.

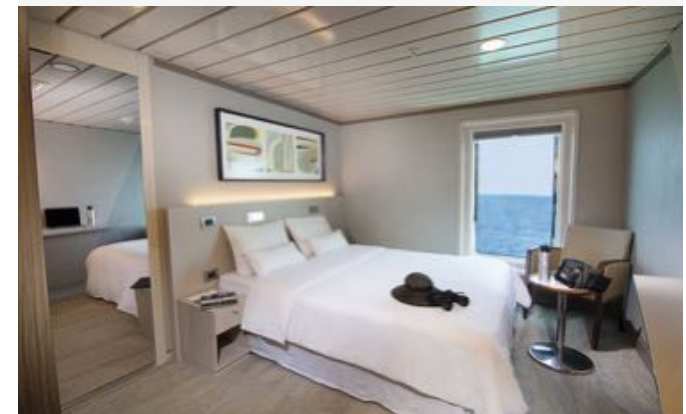
OVERNIGHT

C/S LA PINTA



An elegant and sophisticated mid-sized luxury yacht with fine dining and all the creature comforts. Excellent for both families and couples.

[CLICK HERE TO LEARN MORE](#)



Photos for guidance only & not necessarily the room booked



YOUR DETAILED DAY BY DAY ITINERARY

DAY 3 - SATURDAY

DATE TBC

GALAPAGOS

PUNTA PITT (SAN CRISTOBAL ISLAND) & CERRO BRUJO

We land at the eastern tip of San Cristobal Island this morning. The trail that ascends from the beach provides spectacular views of the shoreline; we can observe frigates, plus a colony of bachelor sea lions. After the walk, if conditions are favourable, there is a chance to swim from the beach and snorkel.

In the afternoon following lunch on board, a dinghy ride along the shores of tuff-stone layers takes us to Cerro Brujo's expansive, white coral beach, great for walking, with rewarding bird-watching featuring seabirds and shore birds. Also, look out for Galapagos sea lions. These are the same shores that Charles Darwin walked upon, back in September 1835.

 **Meals Included:** Breakfast, Lunch & Dinner.

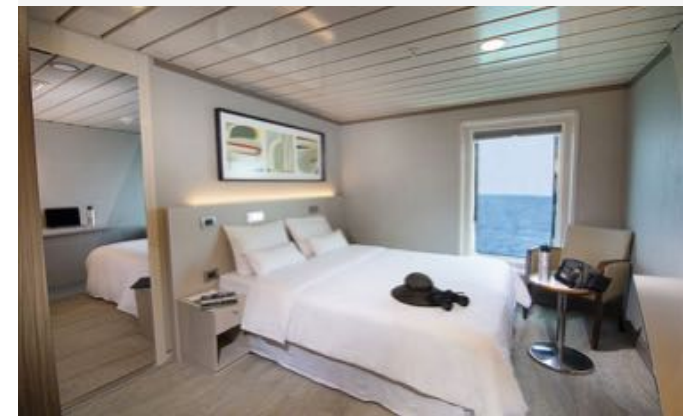
OVERNIGHT

C/S LA PINTA



An elegant and sophisticated mid-sized luxury yacht with fine dining and all the creature comforts. Excellent for both families and couples.

[CLICK HERE TO LEARN MORE](#)



Photos for guidance only & not necessarily the room booked



YOUR DETAILED DAY BY DAY ITINERARY

DAY 4 - SUNDAY

DATE TBC

GALAPAGOS

PUNTA SUAREZ & GARDNER BAY

Our morning outing at Punta Suarez provides an exciting walk on lava/boulder terrain to visit its unique sea bird colonies, including the Galapagos albatross (April – January), boobies, swallow-tail gulls, and the famous “blowhole” lava formation. Also, look for red-green-black marine iguanas. Many regard this site as the best in the Galapagos. Back on board for lunch.

In the afternoon, we set down at this beautiful, white coral beach for a short walk to observe the sea lions, mockingbirds, finches, or enjoy the beach. There is great snorkelling in this area, or else there’s time to kayak or ride the glass-bottom boat.

 **Meals Included:** Breakfast, Lunch & Dinner.

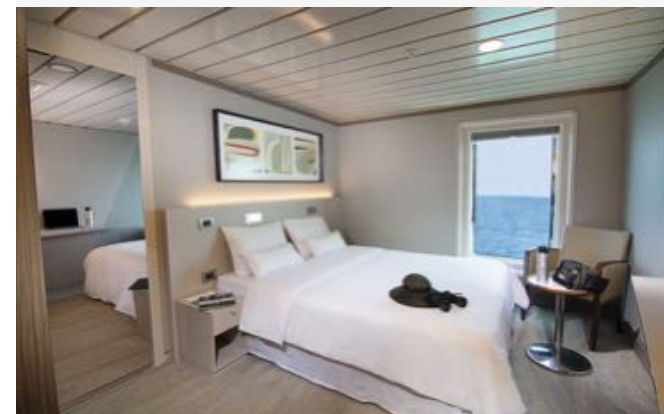
OVERNIGHT

C/S LA PINTA



An elegant and sophisticated mid-sized luxury yacht with fine dining and all the creature comforts. Excellent for both families and couples.

[CLICK HERE TO LEARN MORE](#)



Photos for guidance only & not necessarily the room booked



YOUR DETAILED DAY BY DAY ITINERARY

DAY 5 - MONDAY

DATE TBC

 **END**

CHARLES DARWIN RESEARCH STATION (SANTA CRUZ ISLAND) & DEPART FROM BALTRA AIRPORT

Disembarking in the morning, we visit the Charles Darwin Research Station and the captive rearing programme for the giant tortoises. Here we witness the efforts and results of Galapagos fieldwork and study done in the name of science. We transfer via bus across Santa Cruz Island and a short ferry ride to Baltra.

Our journey ends at Baltra Island, where we transfer to the airport to take the flight back to the mainland. Baltra's flat substrate (due to its uplifted origin) is the reason why the island was chosen back in the 1940s as the construction site for an airport.

 **Meals Included:** Breakfast.





ITINERARY 7 DAY "WESTERN"



INTRODUCTION

We're delighted to have you on board for this journey of discovery to some of the most beautiful islands in the Galapagos. This itinerary will take us to the true origins of the archipelago, to a world only recently created by the titanic tectonic upheavals of our Earth's crust, whose volcanic hot spot formed the islands in a blink of an eye in geological time. Fernandina Island is regarded as one of the most pristine island environments anywhere in the world, where life has evolved in its natural state, far from the intervention of man.

From the west, we venture back to the Central Islands, landing at the intriguing red beach of Rabida and seeking out the land iguanas of Cerro Dragon. On Santa Cruz, we visit the Charles Darwin Research Station and get up close to giant tortoises in their natural environment. In the south, we learn about the Galapagos very own "murder mystery", spot flamingos and snorkel at one of the best sites in the archipelago: Champion Islet.

Back in the Central Islands, we head back to Baltra Island for the flight back to the mainland. You will find all corners of the Galapagos stunning, and they will delight you in different ways. Rest assured the crew aboard La Pinta will do their utmost to ensure your Galapagos experience is truly deeply moving and memorable.

	AM VISITS	ISLAND	AQUATIC ACTIVITIES	PM VISITS	ISLAND	AQUATIC ACTIVITIES	HIGHLIGHTS
Friday	Baltra Airport	Baltra Island		North Seymour Island	North Seymour Island		North Seymour & Fernandina Islands
Saturday	Punta Vicente Roca	Isabela Island		Punta Espinoza	Fernandina Island		
Sunday	Urbina Bay	Isabela Island		Tagus Cove	Isabela Island		
Monday	Red Beach	Rabida Island	 	Dragon Hill	Santa Cruz Island		
Tuesday	Charles Darwin Research Station	Santa Cruz Island		Giant Tortoise Reserve	Santa Cruz Island		
Wednesday	Post Office Bay	Floreana Island	 	Punta Cormorant & Champion Islet	Floreana Island		
Thursday	Baltra Airport	Baltra Island					

Itineraries for reference only. Our route and programs may vary due to National Park policies and regulations, weather conditions, seasonal changes, safety and operational reasons, and the wildlife we encounter.

Aquatic activities:  snorkeling  panga ride  kayaking  glass-bottom boat  beach  swimming  paddleboarding



YOUR DETAILED DAY BY DAY ITINERARY

DAY 1 - FRIDAY

DATE TBC

GALAPAGOS

BALTRA ISLAND & NORTH SEYMOUR ISLAND

Our adventure begins with a morning flight to Baltra Island and immediate transfer to the dock to board Yacht La Pinta. There's an introductory welcome briefing, boat drill, cabin assignment followed by lunch.

Following an afternoon disembarkation, we enjoy a walk along the coast and the interior of this beautiful flat island, observing numerous bird colonies as well as sea lions and land iguanas. There are opportunities for coastal exploration by dinghy. Evening briefing, welcome cocktail and dinner.

IMPORTANT NOTE: All Galapagos itineraries described are subject to weather conditions at the time and may be altered by the Captain whose decision is final.

IMPORTANT NOTE: Yacht La Pinta operates on a 15-day cycle (to cover each separate region of the archipelago), meaning that not all Fridays of the year will serve as departure dates for this specific itinerary. Please refer to our Sailing Dates table for exact departure dates for Fridays of the year.

 **Meals Included:** Lunch & Dinner.

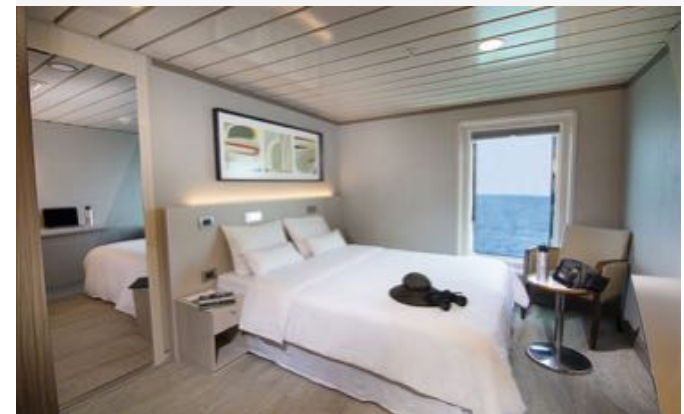
OVERNIGHT

C/S LA PINTA



An elegant and sophisticated mid-sized luxury yacht with fine dining and all the creature comforts. Excellent for both families and couples.

[CLICK HERE TO LEARN MORE](#)



Photos for guidance only & not necessarily the room booked



THELATINAMERICATRAVELCOMPANY.COM | Email: info@thelatinamericatraveltravelcompany.com
UK ☎: +44 (0) 20 8191 7772 | Part of HeadsEast Ltd - UK business registration: 6717612



YOUR DETAILED DAY BY DAY ITINERARY

DAY 2 - SATURDAY

DATE TBC

GALAPAGOS

PUNTA VICENTE ROCA (ISABELA ISLAND) & PUNTA ESPINOZA (FERNANDINA ISLAND)

Since there is no landing site at this location, the coastal exploration is by panga, while the naturalist guide explains the dramatic geology of the area, with remains of lava flows and tuff stone layers. There is abundant wildlife and, depending on the conditions of the ocean, we'll be able to snorkel along the cliffs, hopefully in the company of green sea turtles.

In the afternoon, we visit the youngest and most pristine island of the archipelago, Fernandina, one of many visitors' all-time favourites. Punta Espinoza has an amazing combination of barrenness and abundant wildlife. Highlights include hawks, penguins, flightless cormorants and astounding views of the surrounding volcanic landscapes.

 **Meals Included:** Breakfast, Lunch & Dinner.

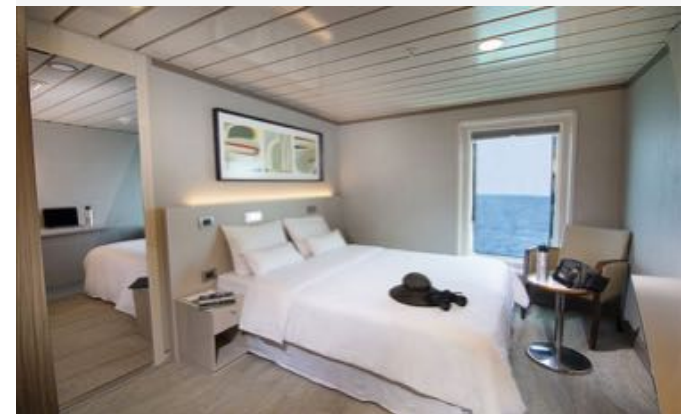
OVERNIGHT

C/S LA PINTA



An elegant and sophisticated mid-sized luxury yacht with fine dining and all the creature comforts. Excellent for both families and couples.

[CLICK HERE TO LEARN MORE](#)



Photos for guidance only & not necessarily the room booked



THELATINAMERICATRAVELCOMPANY.COM | Email: info@thelatinamericatraveltravelcompany.com
UK ☎: +44 (0) 20 8191 7772 | Part of HeadsEast Ltd - UK business registration: 6717612



YOUR DETAILED DAY BY DAY ITINERARY

DAY 3 - SUNDAY

DATE TBC

GALAPAGOS

URBINA BAY & TAGUS COVE (ISABELA ISLAND)

After breakfast, we disembark at Urbina Bay, on the western side of Isabela Island, the result of an uplifting of the ocean floor. Here you can see corals, shells, and large and very colourful Galapagos land iguanas, as well as (occasionally) giant tortoises. Navigating the Bolívar Channel, there are good chances of spotting several species of whales.

On the northwest of Isabela, secluded Tagus Cove provided a favourite anchorage for pirates and whalers over the centuries, and today makes a great visitor site. An uphill hike takes us to the back of Darwin Crater, filled with salt water. We can snorkel or ride kayaks amid the dramatic landscape before going on our hike.

 **Meals Included:** Breakfast, Lunch & Dinner.

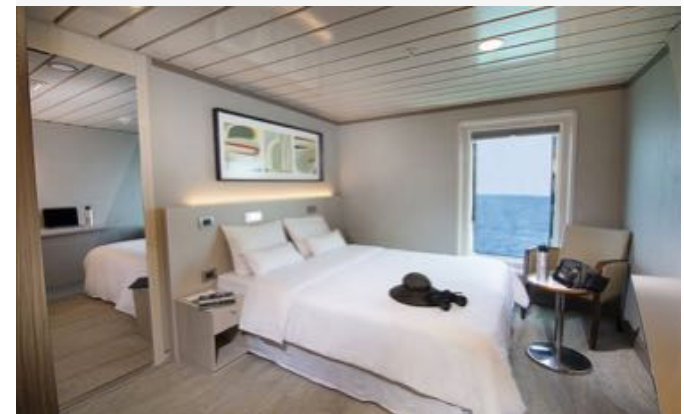
OVERNIGHT

C/S LA PINTA



An elegant and sophisticated mid-sized luxury yacht with fine dining and all the creature comforts. Excellent for both families and couples.

[CLICK HERE TO LEARN MORE](#)



Photos for guidance only & not necessarily the room booked



YOUR DETAILED DAY BY DAY ITINERARY

DAY 4 - MONDAY

DATE TBC

GALAPAGOS

RABIDA ISLAND & CERRO DRAGON (DRAGON HILL) (SANTA CRUZ ISLAND)

In the morning, we disembark at Rabida Island's red-coloured beach. A stroll along the beach allows us to observe marine iguanas, mockingbirds, yellow warblers and several species of Darwin's finches. This is a great place to snorkel from the beach. For non-snorkelers, we can ride our glass-bottom boat for an exploration of life underneath the waves.

The north shore of Santa Cruz hosts the fascinating landscapes of Cerro Dragon (Dragon Hill). Our walk includes circling a brackish water lagoon frequented by lagoon birds, while further inland, the trail offers a beautiful view of the bay and the western islands of the archipelago, as well as the chance to observe land iguanas.

 **Meals Included:** Breakfast, Lunch & Dinner.

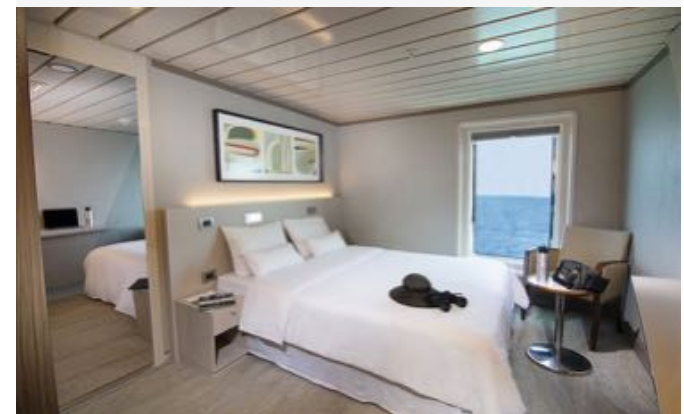
OVERNIGHT

C/S LA PINTA



An elegant and sophisticated mid-sized luxury yacht with fine dining and all the creature comforts. Excellent for both families and couples.

[CLICK HERE TO LEARN MORE](#)



Photos for guidance only & not necessarily the room booked



YOUR DETAILED DAY BY DAY ITINERARY

DAY 5 - TUESDAY

DATE TBC

GALAPAGOS

PUERTO AYORA & CHARLES DARWIN RESEARCH STATION & HIGHLANDS OF SANTA CRUZ ISLAND

The morning visit heads to the Charles Darwin Research Station and the giant tortoise pens within an impressive giant prickly-pear cactus forest. These are the Galapagos' headquarters of scientific investigation, conservation and the National Park administration. Following our visit, we drive up to highlands of Santa Cruz for lunch.

The highlands of Santa Cruz Island are another world entirely from the drier coast, lush and green due to the heavier rainfall they receive. This is a great place to look for the emblematic Darwin's Finches and the endemic Scalesia trees. The highlands are also excellent for exploring the exuberant vegetation where giant tortoises roam in the wild. We visit a giant tortoise reserve to meet these lumbering giants up-close. There's more time to explore more of this fascinating ecosystem, before returning to the yacht at the end of the day.

 **Meals Included:** Breakfast, Lunch & Dinner.

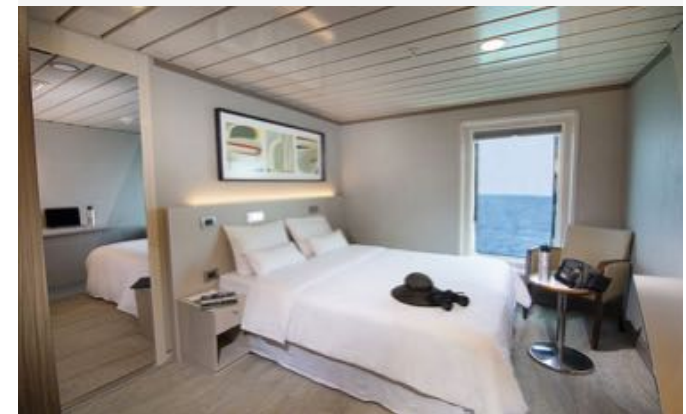
OVERNIGHT

C/S LA PINTA



An elegant and sophisticated mid-sized luxury yacht with fine dining and all the creature comforts. Excellent for both families and couples.

[CLICK HERE TO LEARN MORE](#)



Photos for guidance only & not necessarily the room booked



YOUR DETAILED DAY BY DAY ITINERARY

DAY 6 - WEDNESDAY

DATE TBC

GALAPAGOS

POST OFFICE BAY & CHAMPION ISLET & PUNTA CORMORANT (FLOREANA ISLAND)

After breakfast, we land at Post Office Bay to visit the historic barrel that has served as a post office in the archipelago for over two centuries. Panga rides along the maze of channels on Floreana's north shore can also be enjoyed. Views from La Lobería and the Baroness Viewpoint are quite rewarding. There's great kayaking and swimming from the beach as well.

Before disembarking at Punta Cormorant we can snorkel or ride our glass-bottom boat along the coast of an extinct cone called "Champion Islet". Later in the afternoon, our visit to Punta Cormorant takes in an olivine-crystal beach for an easy walk by a brackish water lagoon where bird species like American flamingos may be observed. On the other side of the island, we come to a white-sand beach where sea turtles come out at night to nest.

 **Meals Included:** Breakfast, Lunch & Dinner.

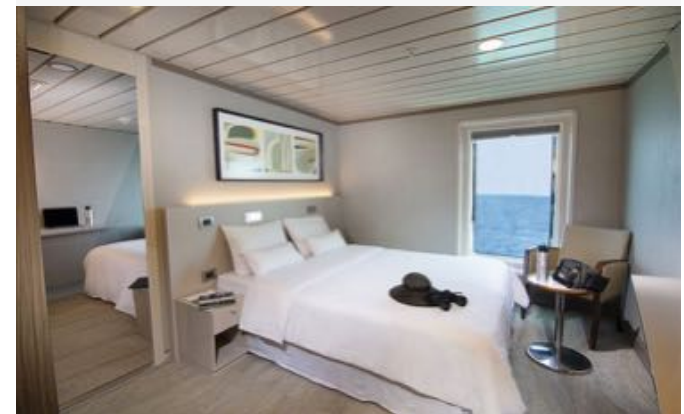
OVERNIGHT

C/S LA PINTA



An elegant and sophisticated mid-sized luxury yacht with fine dining and all the creature comforts. Excellent for both families and couples.

[CLICK HERE TO LEARN MORE](#)



Photos for guidance only & not necessarily the room booked



YOUR DETAILED DAY BY DAY ITINERARY

DAY 7 - THURSDAY DATE TBC

 END

BALTRA ISLAND FOR A FLIGHT TO THE MAINLAND

Our journey ends at Baltra Island, where we transfer to the airport to take the flight back to the mainland. Baltra's flat substrate (due to its uplifted origin) is the reason why the island was chosen back in the 1940s as the location to building an airport.

 **Meals Included:** Breakfast.

